

RESEARCH ARTICLE

Open Access

Uncovering the genetic basis for early isogamete differentiation: a case study of *Ectocarpus siliculosus*

Agnieszka P Lipinska^{1*}, Sofie D'hondt¹, Els JM Van Damme² and Olivier De Clerck¹

Abstract

Background: The phenomenon of sexual reproduction characterizes nearly all eukaryotes, with anisogamy being the most prevalent form of gamete discrimination. Since dimorphic gametes most likely descend from equal-sized specialized germ cells, identifying the genetic bases of the early functional diversification in isogametes can provide better understanding of the evolution of sexual dimorphism. However, despite the potential importance to the evolutionary biology field, no comprehensive survey of the transcriptome profiling in isomorphic gametes has been reported hitherto.

Results: Gamete differentiation on the genomic level was investigated using *Ectocarpus siliculosus*, a model organism for brown algal lineage which displays an isogamous sexual reproduction cycle. Transcriptome libraries of male and female gametes were generated using Next Generation Sequencing technology (SOLiD) and analyzed to identify differentially regulated genes and pathways with potential roles in fertilization and gamete specialization. Gamete transcriptomes showed a high level of complexity with a large portion of gender specific gene expression. Our results indicate that over 4,000 of expressed genes are differentially regulated between male and female, including sequences related to cell movement, carbohydrate and lipid metabolism, signaling, transport and RNA processing.

Conclusions: This first comprehensive transcriptomic study of protist isogametes describes considerable adaptation to distinct sexual roles, suggesting that functional anisogamy precedes morphological differentiation. Several sex-biased genes and pathways with a putative role in reproduction were identified, providing the basis for more detailed investigations of the mechanisms underlying evolution of mating types and sexual dimorphism.

Keywords: Gamete, Transcriptome, *Ectocarpus*, Sexual reproduction, Isogamy, Brown alga, Signaling

Background

Sexual reproduction encompasses the fusion of two specialized haploid cells to form a zygote. Phylogenetic analyses suggest that sexual reproduction arose already in the common ancestor of all eukaryotes [1,2], implying the existence of selective forces that gave an advantage to sexuality. Despite the costs and major challenges presented to the reproductive cells, over 99.9% of eukaryotes engage in sex [3,4], which inspired generations of biologists to study this widespread phenomenon from physiological, molecular and evolutionary perspectives.

The existence of two gamete types and the tendency for gamete dimorphism remains an intriguing puzzle as anisogamy characterizes nearly all plants and animals. Oogamy (large eggs and small sperm) seemed to be the course of evolution from isogamy (equally-sized gametes) and arose independently in many groups of eukaryotes; however numerous species continue to reproduce with isomorphic germ cells [5,6]. Although substantial research addressed gene expression profiles in reproductive cells of flowering plants and animals [7-12], and studies of the mating locus in Volvocine algae shed light on the transition towards oogamy [13,14], not much is known about how the global patterns of sex-biased gene expression were shaped throughout the evolution of mating types and transition towards anisogamy. Such studies are important,

* Correspondence: ap.lipinska@gmail.com

¹Phycology Research Group and Center for Molecular Phylogenetics and Evolution, Ghent University, Krijgslaan 281, Building S8, 9000 Ghent, Belgium
Full list of author information is available at the end of the article

because most of the evolutionary models accept the existence of two specialized mating types upon which the evolution of gamete size was superimposed [15]. Therefore, a detailed characterization of transcriptional adaptation in equally-sized gametes would bring a better understanding to the mechanisms underlying evolution of sexual dimorphism. In this respect, brown algae (Phaeophyceae) with their broad spectrum of gamete copulation forms are suitable subjects to test various hypotheses [16].

Brown algae are a large group of multicellular, photosynthetic organisms, which evolved 150–200 million years ago. Distant to land plants and animals, they developed complex multicellularity independently from other major clades [17,18]. This polymorphic group hosts seaweeds of a vast range of sizes, ecological niches and with an unmatched diversity of life cycles and fertilization strategies ranging from isogamy over anisogamy to oogamy [16,19]. Despite the evolutionary distance, brown algae share many common features with land plants, which first brought much attention to eggs and zygotes of brown macroalgae, due to their large size and abundance, as a material to study the regulation of early development in plants [20–22]. Other studies on reproduction have focused mainly on networks of signals that are associated with gamete attraction, recognition and fertilization success [23–26]. Although a large amount of research concerns brown algal biology, many aspects remain poorly explored, providing excellent opportunities for new discoveries.

In recent years, following the selection of *Ectocarpus* as a model for the brown algae, a considerable effort was invested in the development of genomic and genetic tools for this organism, among which was the assembly and analysis of the complete genome sequence [18,27]. *Ectocarpus* is a small filamentous alga, characterized by a haploid-diploid life cycle with isogamous sexual reproduction where flagellated gametes are still morphologically, but no longer physiologically, identical. Female gametes are distinguished by a short swimming period preceding settlement, flagella digestion and pheromone release [28]. Fertilization takes place immediately after recognition by gender specific sex-receptors present on the egg surface and the male anterior flagellum [29,30]. However, the dynamics and regulation of the mechanism driving male and female gamete differentiation and adaptation to fulfill their specific functions remain largely unexplored.

Here we describe transcripts specific to the gametes of both sexes. Using AB SOLiD 3 Next Generation Sequencing technology we generated whole RNA profiles of reproductive cells of *E. siliculosus* and determined the gender-specific regulation of the major metabolic pathways. The results present a first comparative gamete

transcriptome analysis of any protist and provide an overview of the genes that contribute to the gametes' cellular identity and function.

Results and discussion

Next Generation Sequencing and mapping of the *Ectocarpus* transcriptome

Sequencing of rRNA-depleted total RNA of *Ectocarpus* gametes yielded more than 36 million 50 bp reads for the male and 28 million 50 bp reads for the female sample. An overview of the results is shown in (Table 1). We were able to map on the genome 45 and 62% of male and female reads, respectively. Reads that had no match are likely to be PCR artifacts, were of low quality or have origins outside the reference genome. Since the *Ectocarpus* strain used in this study was different from the strain that was used for genome sequencing [31] it is also plausible that part of the unmatched sequences is derived from genomic variation between the two strains.

After the alignment quality assessment, 16.74% of all aligned reads for male and 14.01% of the reads for female were chosen as unique and high quality mappings to the nuclear genome. At this sequencing depth we found at least five non-clonal reads uniquely aligned to 8,029 and 7,777 of 16,239 annotated nuclear genes (male and female respectively). Summarized expression data is presented in Additional file 1: Table S1. Despite the high level of detection, more than 80% of the alignments fell outside the coding sequences. It is plausible that some of these come from intronic regions and are presumably descended from pre-mRNA present in the ribo-depleted total RNA sample or might represent intron retention events [18] since a large portion of these reads did not match annotated genes, indicating other transcriptionally active sites. These findings are in line with the whole genome tiling array, which identified 8,741 expressed regions longer than 200 bp outside of predicted genes as potential novel protein-coding regions or non-coding RNA genes [18].

The relative abundance of each gene in the mRNA pool was deduced by determining the Trimmed Mean of *M*-values (TMM) normalized number of reads mapped in the exon region and classified into four expression

Table 1 Transcriptome mapping results of *Ectocarpus siliculosus* male and female gametes

	Male gametes	Female gametes
Total number of reads	36 751 768	28 591 842
Total number of mapped reads	16 580 350	17 697 894
High quality mappings (normodds >=0.7)	2 775 695	2 478 987
Mapped to known genes	899 347	1 386 445
Mapped outside of known genes	1 876 348	1 092 542

categories: Very highly expressed (read count ≥ 1000), Highly expressed ($1000 > \text{read count} \geq 100$), Medium expressed ($100 > \text{read count} \geq 15$) and Low expressed ($15 > \text{read count} > 5$). As shown in Figure 1 the sequencing data is enriched in medium and low expressed transcripts, confirming the sensitivity of our RNA-Seq approach to detect lowly expressed genes [32].

Gametes have unique transcriptional profiles

A Venn diagram (Figure 2) displays common gene expression between gametes and representative EST libraries [31] of vegetative gametophyte and sporophyte tissues (corresponding to 9,163 annotated genes). Approximately 70% of the EST sequences were shared by gametes and vegetative tissues. This is not surprising, since non-fertilized *Ectocarpus* gametes are capable of parthenogenesis and development into functional parthenosporophytes [28]. However, almost one-third of the gamete-expressed transcripts were found exclusively in the reproductive cells. Gene ontology (GO) analysis of this subset indicated that sequences related to signal transduction, RNA modification and localization and microtubule based movement were significantly enriched ($p < 0.01$). The high contribution of gamete-specific mRNAs within the whole transcriptome pool highlights the potential significance and regulatory specialization of this subset.

We also looked at the top 100 most expressed genes in gametes and manually grouped them into functional categories based on gene annotation information (Additional file 1: Table S2). The two largest functional clusters were composed of genes related to carbohydrate metabolism including cell wall biosynthesis (11 Female; 11 Male) and protein turnover (7 Female; 8 Male). However, the majority

of the most abundant transcripts were of unknown function (60 Female; 55 Male).

Functional classification of gamete-expressed genes

Around 62% of the gametes' transcripts could be assigned with a Gene Ontology category using Blast2GO (E-value $< 1e-05$). Statistical analysis marked translation and gene expression, auxin biosynthesis, proteolysis, transport, localization and regulation of signal transduction significantly overrepresented in both gamete types (FDR $< 10\%$). Additionally, we found that transcripts related to vesicle-mediated transport, lipid metabolism and iron/sulfur cluster assembly were significantly overrepresented in the female library, whereas sequences related to pigment biosynthesis were enriched in the male library. In the "cellular component" category, differences were observed in mitochondrion, nucleus, vesicle membrane and Golgi related components (overrepresented in female library) and chloroplast stroma (overrepresented in male library) (see Figure 3 for enrichment in Molecular Function and Additional file 1: Table S3 for full overview). In general, genes related to photosynthesis were underrepresented in the transcriptome of both gametes. Female gametes were also deficient in sequences related to DNA metabolic processes (e.g., protein-DNA complex assembly, nucleosome organization) as well as microtubule-based movement and male gametes had underrepresented genes in the cellulose binding group.

Based on significant similarity (E-value $< 1e-05$) we also assigned 2,418 and 2,243 Kegg orthology terms to gamete's expressed proteins (male and female respectively) using the KOBAS server [34]. A significant proportion of the transcripts in females (FDR $< 10\%$) were associated

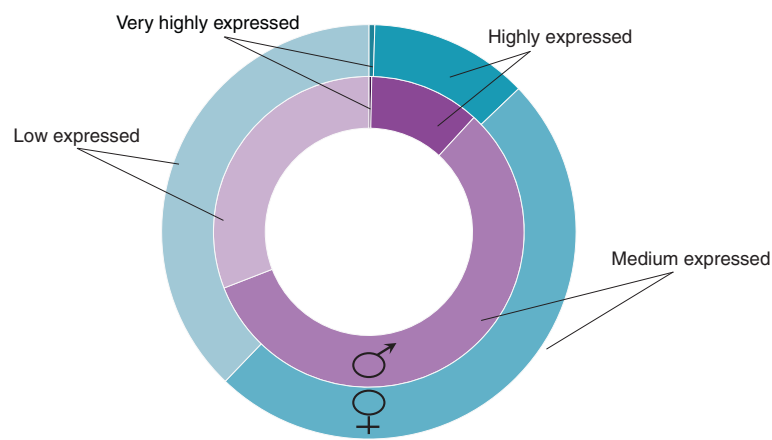
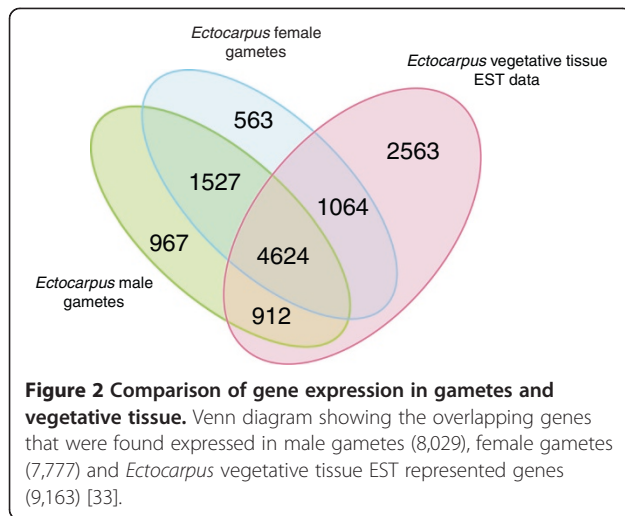


Figure 1 Overview of gene classification into expression categories based on mapped reads number. Genes were grouped into four categories: 'Very highly expressed' (read count ≥ 1000), 'Highly expressed' ($1000 > \text{read count} \geq 100$), 'Medium expressed' ($100 > \text{read count} \geq 15$) and 'Low expressed' ($15 > \text{read count} > 5$); male gametes (purple circle) and female gametes (blue circle).



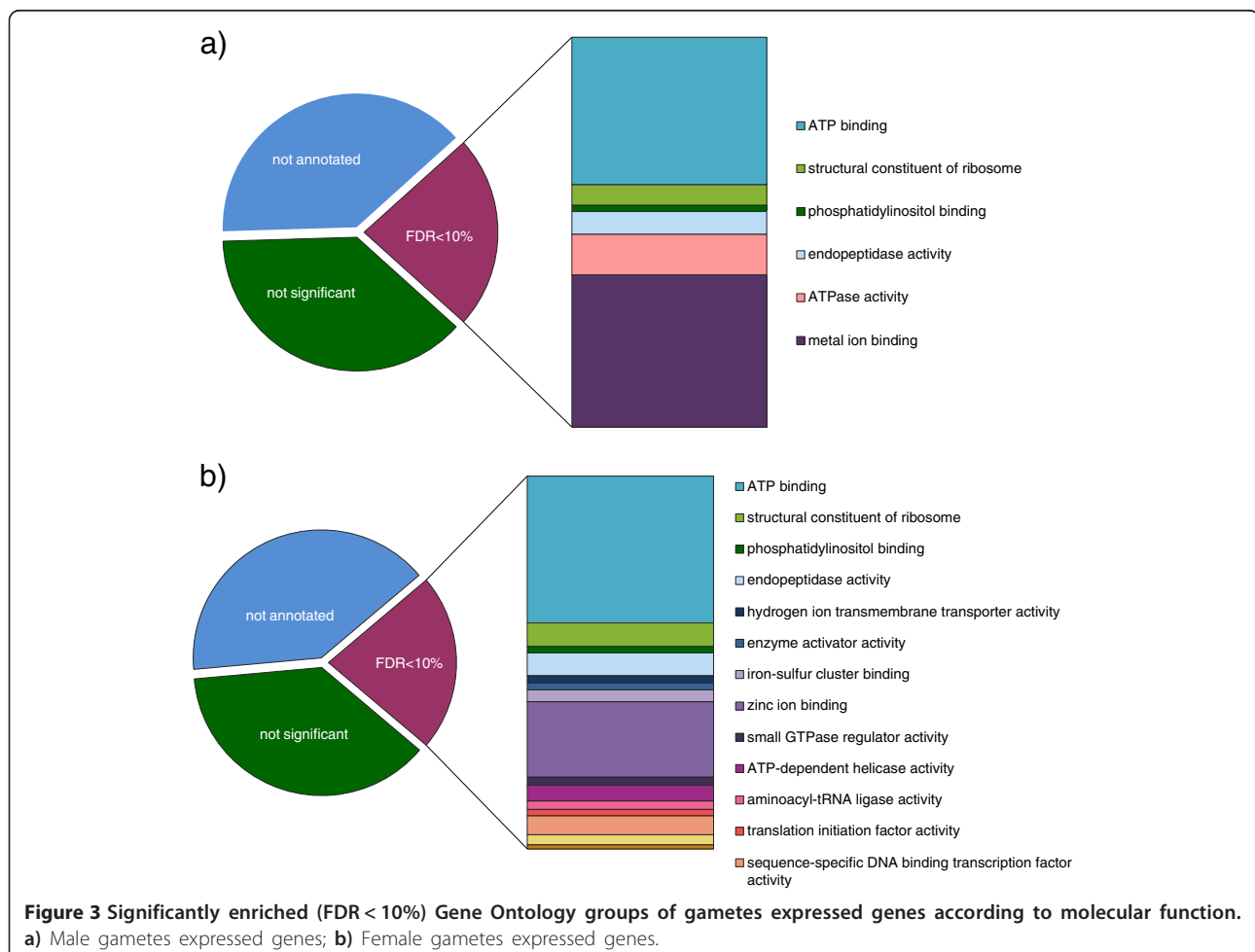
with ribosome, spliceosome and endocytosis. Ribosome was the only valid pathway overrepresented in male gametes with the given threshold (FDR < 10%).

Analysis of differentially expressed genes

The preferential expression of genes belonging to a specific functional category became more evident when differentially expressed genes were considered. Using the edgeR package for R (FDR of 5% and a fold change >= 2) 4,117 genes were identified as differentially expressed between male and female gametes (Figure 4, Additional file 1: Table S4). Apparent enrichment could be seen in particular with the categories microtubule based movement, vesicle trafficking, ion dynamics, cell wall biosynthesis, transcription and translation regulation, and signaling related genes, which are described below (Figures 5 and 6, Additional file 1: Table S5; for details about involved genes see Additional file 1: Table S6).

Microtubule based movement

The terms overrepresented in male gametes are assigned primarily to microtubule based movement (GO:0007018),



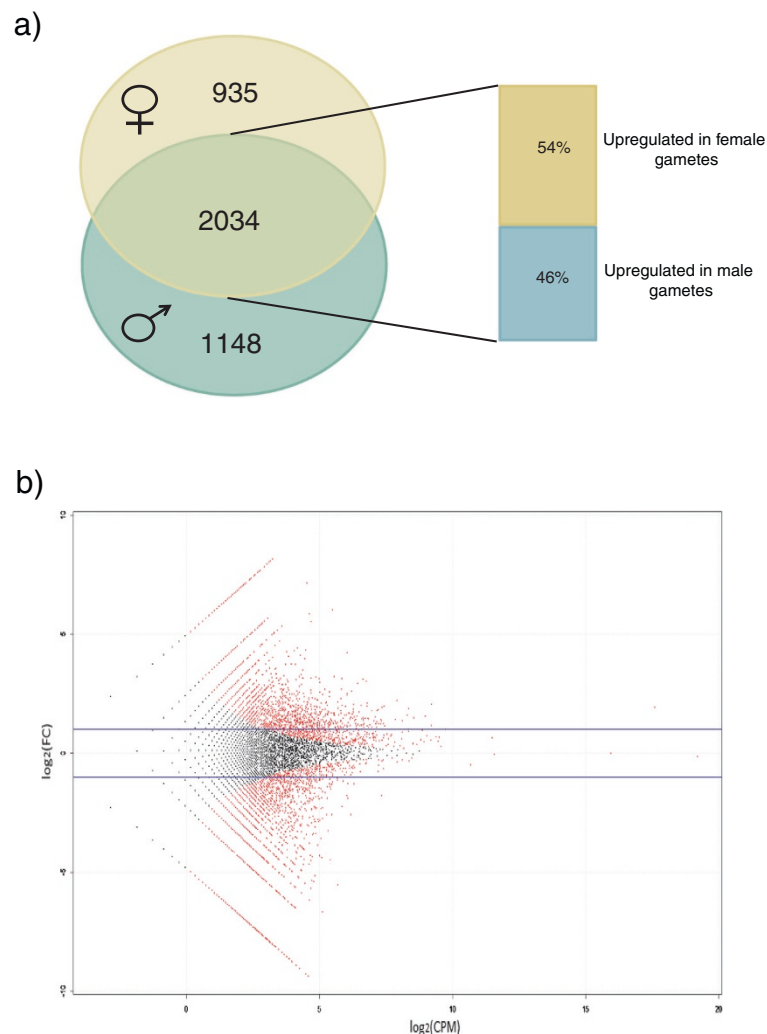


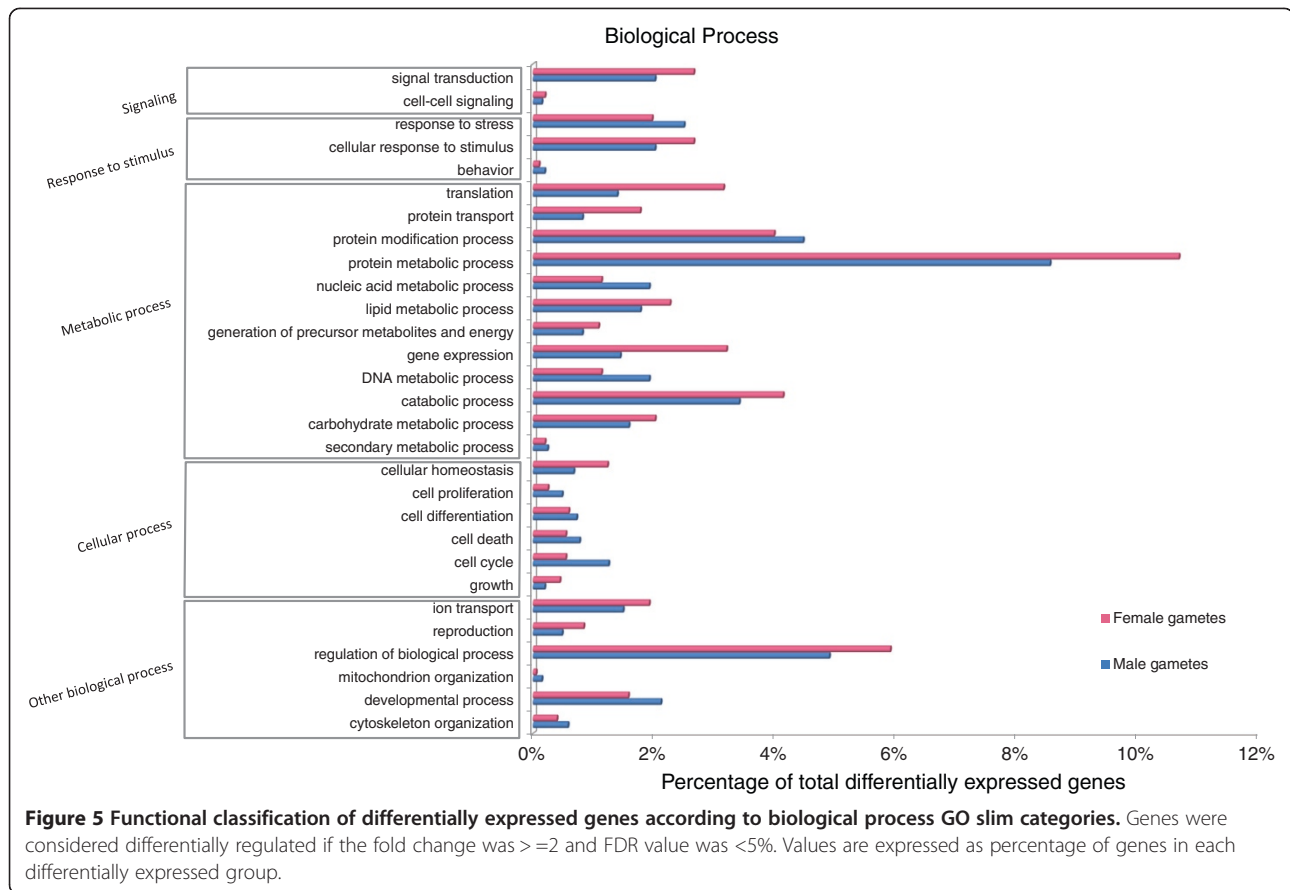
Figure 4 Differential gene expression between male and female gametes of *Ectocarpus*. **a)** Venn diagram showing the distribution of 4117 differentially expressed genes between gametes (Fold Change ≥ 2 ; FDR $< 5\%$), with 935 and 1148 genes being found expressed only in female and male gametes respectively. Out of the 2034 genes expressed in both gamete types, 54% are upregulated in females. **b)** Scatter plot showing distribution of fold-change in expression in male versus female gametes (y-axis) against expression level (x-axis). Differentially expressed genes at significance level of FDR $< 5\%$ are colored red; blue line indicates 2-fold difference in expression.

which can be associated with the sperm active swimming behavior. Besides the canonical role in locomotion, *Ectocarpus* flagella are also important sensory organs involved in chemosensation and gamete recognition [25,30]. Several genes belonging to the intraflagellar transport (IFT) and motor protein families were overexpressed in male gametes. IFT proteins are macromolecular rafts responsible for the assembly and maintenance of the flagella [35] and the deposition of mastigonemes on the flagella surface after their assembly in the ER [36]. Growing evidence suggests IFT plays a more direct role in cilia-mediated signaling [37]. Among other genes linked to the gamete flagella, we found members of the Sexually Induced Gene family – Sig1 and Sig2-like gene, with Sig1 among the

highly overexpressed genes in male gametes. This family of proteins was first described during the onset of sexual reproduction in the diatom *Thalassiosira* [38] and later also in other Stramenopiles [39]. Sig proteins are located to the mastigonemes [40], but their function remains unresolved. However, striking diversification of Sig1 between closely related species of *Thalassiosira* [41] and some evidence of positive selection acting on this gene [42], may suggest a role in gamete recognition.

Ion dynamics

Potassium channel activity (GO:0005267) and calcium-activated potassium channel activity (GO:0015269) were significantly overrepresented in male gametes. These

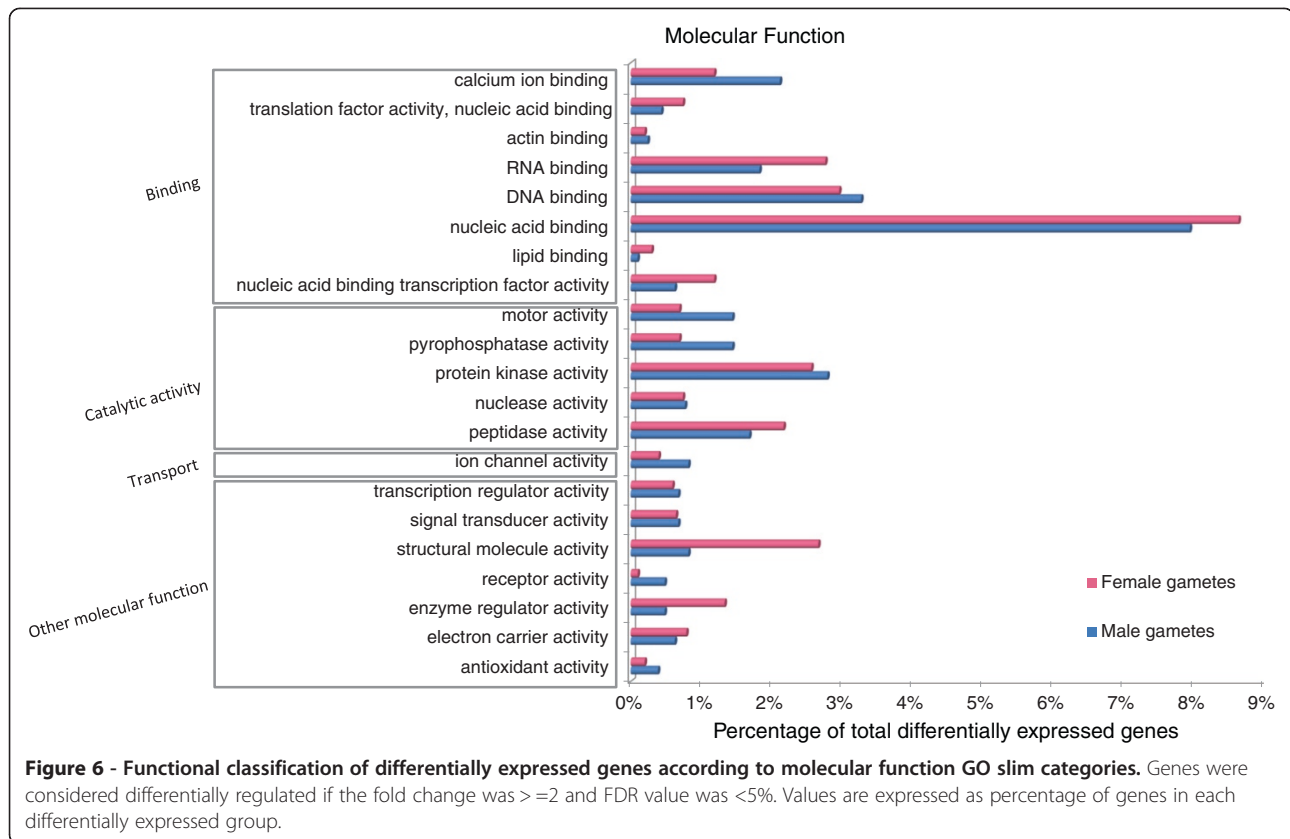


might be related to the sperm chemotaxis in analogy to the gene network triggering motility response to stimuli in sea urchin sperm (see [43,44] for a review). It has been shown that cyclic nucleotide messengers and changes in K^+ ion dynamics lead to hyperpolarisation of the cell membrane and activation of the Na^+ and Ca^{2+} influx in sperm [45-50]. Recently, a transient increase in Ca^{2+} in the flagellum was directly visualized during chemotactic orientation in ascidian sperm using a fast Ca^{2+} imaging system [51]. Previous studies on *Ectocarpus* pheromone response confirm participation of free Ca^{2+} in sperm navigation, since concentrations below 10^{-7} M caused male gamete immobilization despite the presence of the attractant [52]. Highly upregulated male genes, with a homology to the *Strongylocentrotus* sperm pathway, included three cyclic nucleotide binding K^+ channels with similarity to the TetraKCNG channel (BLAST E value $> 1e-20$), a Na^+/H^+ exchanger, an adenylate cyclase, a sperm hyperpolarization-activated and cyclic nucleotide-gated channel (BLAST E value $> 1e-15$) and a similar voltage gated-calcium channel (BLAST E value $> 1e-33$).

Cell wall/polysaccharide biosynthesis

Members of different carbohydrate biosynthesis pathways were predominantly upregulated in female gametes, which

relates probably to primary cell wall biogenesis minutes after fertilization [23]. All enzymes involved in alginate synthesis [53] and three *Ectocarpus* cellulose synthases (CESAs) are highly overexpressed in female gametes, which is apparent with the brown algal cell walls being composed of alginate with a minor fraction of cellulose [54]. Apart from alginate and cellulose, sulfated fucans and phenolic biomolecules (phlorotannins) are secreted into the expanding cell wall [55]. We can assume that these compounds are also synthesized in gametes, since all fucosyltransferases (except from family GT24) and sulfotransferases (STs) (except Clade B) [53] were transcribed with some gender specificity. It is worth noting that one sulfotransferase (Esi0032_0064), related to metazoan STs involved in the biosynthesis of glycosphingolipids, was characterized by a much higher expression comparing to other STs in both gametes. Associated with lipid rafts, glycosphingolipids may act as intermediates in signaling the flow from outside to inside the cell [56]. Sulfated fucans and galactans are also reported to be involved in sea urchin fertilization. They act as inducers of the sperm acrosome reaction [57,58] by binding to the sperm receptor REJ (Receptor for Egg Jelly), a homolog of the human polycystin protein [59]. Interestingly, five of the expressed sulfotransferases



were specific only to female gametes and five polycystin/REJ-like proteins (IPR002859) were expressed exclusively in males.

Vesicle trafficking

Gametes and spores of *Ectocarpus* can be characterized by the presence of several active Golgi bodies [60,61]. Similar observations were made with early electron scanning photographs of *Fucus* unfertilized eggs, which show a characteristic, rough surface due to protrusion of the cytoplasmic vesicles beneath the plasma membrane [23]. These findings are reflected in the upregulated genes of female gametes, since clathrin coat proteins (GO:0030118) constituting vesicles travelling from the Golgi apparatus to the plasma membrane [62] are highly abundant. The same is observed with the retromer complexes (GO:0030904), which assemble on early endosomes and are involved in transport back to the Golgi apparatus. Additionally, the Rab protein signal transduction pathway (GO:0032483), including the Arf family, which are coat-recruitment GTPases (for a recent review, see [63,64]) and dynamins, which are necessary for pinching the vesicles [62], are upregulated in female gametes.

The Golgi complex is the major site for polysaccharide synthesis including alginates, sulfated fucans and phlorotannins of the algal cell wall, which are transported in

vesicles to the plasma membrane [55,65]. Thus, the up-regulated pathways of cellulose biosynthesis and vesicular transport can support primary cell wall biogenesis. It is also possible that this secretory activity may be important for biosynthesis of the adhesive substance required for gamete attachment to a substrate [66].

Translation and transcription regulation

Gene expression in gametes is developmentally regulated and stage specific, and thus requires a precise and well-coordinated program of transcription regulation. Gametes express transcription factors across most of the described TFs families in *Ectocarpus* [67]. In particular, we find members of Heat shock (HS) factors, fungal TR and CCAAT-binding overrepresented in females and most MYB genes overexpressed in males. Interestingly several MYB factors were also relatively high expressed in *Arabidopsis* sperm cells [9]. Among the highest expressed TFs we find two MYB factors (Esi0038_0132, Esi0212_0014), Zinc-finger C2H2-type factor (Esi0226_0040) and two fungal TRFs (Esi0008_0230, Esi0348_0008). Esi0212_0014 shares 53% identity ($8e^{-37}$) with *Arabidopsis* MYB98 which controls the formation of specific features within the synergid cell during female gametophyte development [68,69].

Another interesting transcription factors family described by [18] is the NIN-like proteins, coded by nine

genes in *Ectocarpus*. NIN-proteins are required for symbiosis between legumes and nitrate assimilating bacteria, and a subfamily of NIN, the minus dominance proteins (MID), are expressed during gametogenesis in volvocine algae and determine the minus mating type [70]. It was suggested, that the NIN-like family might have a role in life cycle or in mating type determination in *Ectocarpus* gametes [18]. Indeed eight members of this family are found in our data, with two of them being specific for female gametes. It is also worth noting, that the most highly expressed NIN factor in both gametes (Esi0013_0140) was significantly downregulated in the *immediate upright* mutant, which is defective in sporophyte development [18].

Protein metabolic processes, in particular biosynthetic pathways (ribosome and translation related) are significantly enriched ($p < 0.01$) in female differentially expressed genes. Additionally, *Ectocarpus* was shown to have a micro RNA post-transcriptional regulation system, where most of the mature miRNA bare a signature preferred by the plant Argonaute-1 protein (AGO1) [18]. The genome contains one AGO1 protein which is expressed at moderate level in both types of gametes. The Argonaute-miRNA are known to silence transcription, trigger target destruction, or inhibit translation, and growing evidence supports their role in germline development [11,71]. Moreover, several potential target sequences including members of the ROCO family GTPases and other proteins containing leucine-rich repeat (LRR) domains [18] are expressed in gametes. Since gametes are vulnerable targets for pathogen attack [72,73], these proteins might be involved in algal immune response to disease [74].

Signaling pathways

Gamete transcripts are enriched in Ras GTPase superfamily genes (Ran, Ras, Rab, Rho and Arf). These signaling molecules are binary switches in crucial cellular processes including growth, differentiation and survival [75]. Rab and Arf are particularly important in membrane trafficking and are enriched in female gametes (see Vesicular transport). The Rho family is involved in signaling networks that regulate actin, cell cycle progression, and gene expression. Noteworthy RAC, a Rho family GTPase, and its positive effector RhoGEF are upregulated in females, whereas RhoGAP, a negative regulator, is highly expressed in male gametes. Rho genes, RhoGDI (guanine nucleotide dissociation inhibitor of Rho) and a RhoGAP were also expressed in *Arabidopsis* sperm, where no RhoGEFs were found [9]. The precise function of Rho signaling in sperm and egg remains to be revealed, but substantial work has been done by Kumakiri *et al.* [76], showing a role in initial sperm-egg fusion in mouse. In the study, *Clostridium difficile* toxin B inhibited sperm incorporation probably by disturbing actin filament reorganization regulated by Rho GTPases. Rac1 seemed

to be strongly expressed in mouse eggs and located in the cortical ooplasm. The process of sperm-egg fusion in mouse would be initiated immediately after sperm binding by membrane receptors that in turn would activate Rho proteins by RhoGEFs. Membrane receptors activating RhoGEFs include G protein-coupled receptors, such as the lysophosphatidic acid (LPA) receptor, the growth factor receptors with a tyrosine kinase domain, such as EGF receptors, and surface proteins such as integrins [77]. Members of all these receptor families could be identified in *Ectocarpus* gametes, but the specific recognition protein involved remains unknown.

Other regulators of Rho GTPase activity (GO:0032319) are expressed in male gametes, including two Target Of Rapamycin (TOR) kinases (TOR1 and TOR2). TOR is a nutrient-sensitive, central controller of cell growth and aging, which was linked to the actin cytoskeleton via a signaling pathway containing a Rho GTPase [78]. Raptor and FKBP12, TOR associated proteins, are also expressed, but no RAG GTPases that promote intracellular localization of TOR were present. In yeast TOR kinases (TOR1 and TOR2) were shown to act in two different pathways (for a recent review see [79]). One pathway involved in cell growth in response to nutrient availability is shared between TOR1 and TOR2; however, TOR2 has additional, unique functions in sphingolipid synthesis, endocytosis and polarized organization of the actin cytoskeleton. *Ectocarpus* has two TOR kinases, both of which are expressed in gametes. Fold change expression analysis shows TOR2 to be upregulated in male gametes (FC = 8) compared to TOR1 (FC = 1.2), which could point to the importance of the second branch of TOR2-signaling in males, especially with high expression of glycosphingolipid-related ST (see Polysaccharide biosynthesis).

Ras GTPases influence transcription of genes involved in cell growth and division by activating protein kinases, such as the mitogen-activated protein (MAP) kinase. Several members of the family were detected in *Arabidopsis* sperm cells and some are sperm specific, implicating the existence of unique signaling pathways [9]. Out of five MAPKs expressed in gametes, two were upregulated in males. We found also one MAPK related serine/threonine protein kinase specific to male gametes, with homology to the LF4 gene (MAPK) localized in *Chlamydomonas* flagella [80]. This protein is involved in a signal transduction cascade controlling flagellar length.

Another effector activated by Ras is phosphoinositide-3-kinase (PI3K). There are two putative PI3Ks in *Ectocarpus*, one highly expressed in both types of gametes and one upregulated in males. The product of PI3K, phosphatidylinositol 3-phosphate, plays an important role in regulating membrane trafficking. Additionally, we identified two enzymes necessary for phosphoinositide-

mediated signaling which were enriched in male gametes, phosphatidylinositol 4-kinase and 1-phosphatidylinositol-4-phosphate 5-kinase, involved in synthesis of phosphatidylinositol 4,5-bisphosphate (PIP2). PIP2 is a minor constituent of the plasma membrane, where it functions as an intermediate in a number of signaling pathways, including G protein-coupled receptor (GPCR) signaling. The sperm-induced breakdown of the PIP2 via activation of phospholipase C is considered to be the major reaction of fertilization [81,82]. The importance of the PIP2 secondary messenger system in sexual reproduction was shown in echinoderms eggs, where it regulates Ca^{2+} release at fertilization and controls the slow polyspermy block [83-85]. PIP2 was also abundant in the plasma membrane and the flagellar membrane of *Chlamydomonas eugametos* gametes, indicating involvement of phosphatidylinositol-calcium signaling system during mating, which could be activated by binding of cell-cell recognition receptors [86]. Additionally, alternative Ca^{2+} gates like ryanodine receptors may be involved following the propagation of a calcium wave [83,87]. One member of inositol triphosphate/ryanodine-type receptors is represented in *Ectocarpus* and found highly expressed in both types of gametes. Existence of inositol 1,4,5-trisphosphate-induced Ca^{2+} waves has been reported in *Fucus* embryos, emphasizing the importance of calcium signaling in response to a physiological stimulus [88,89]. One of the current hypotheses about sperm induced oocyte activation assumes stimulation of a membrane receptor that involves G protein signaling [90]. G-protein coupled receptors (GPCRs) are transmembrane proteins that utilize interactions with heterotrimeric G proteins ($G\alpha$, $G\beta$ and $G\gamma$) for downstream signaling and the pathway depends on the isoform of the α -subunit to which the receptor is coupled [91,92]. Six paralogs of the $G\alpha$ subunits (GPA) are found in the *Ectocarpus* genome and are all expressed in gametes. GPA4 and GPA6 are among the highly transcribed genes whereas the GPA3 and GPA4 are overexpressed in male gametes. Moreover, three putative GPCR receptors are specific to male gametes and three partial GPCRs are upregulated in females. Substantial evidence supports a role of GPCRs in egg-sperm interactions during fertilization. For example, a G-protein coupled receptor located on the spermatozoa plasma membrane activates a signaling pathway responsible for the zona pellucida induced acrosomal exocytosis [93]. A G-protein coupled cAMP transduction pathway is also involved in chemotaxis in human sperm [94] and $G\alpha$ proteins together with adenylyl cyclase were shown to be enriched in sea urchin sperm [95].

The GPCR receptor family is a host to many pheromone receptors [96]. It was shown that *Ectocarpus* sperm chemotaxis is stimulated in a similar manner as for pheromones by trifluoperazine (TFP) [52], which is an antagonist of

dopamine/adrenergic G-protein coupled receptors. Thus, it might be possible that TFP activates the ectocarpene receptor which could belong to GPCR family.

Male and female gametes express genes related to Hedgehog and Notch signaling pathways involved in animal development (for a review see [97,98]). Although these pathways do not exist in a canonical form in non-metazoans, it has been shown that components such as the γ -secretase complex, Notchless and Hog/Hint domain proteins are of ancient origin [99,100] and new receptors seem to evolve by shuffling of pre-existing domains. The presence of Notch receptor building blocks is revealed in the *Ectocarpus* genome, however no homologues of the Notch receptor or its ligands *sensu stricto* have been found. A KEGG orthology analysis of gamete transcripts identified Deltex, a Notchless homolog, Presenilin and Nicastrin from the γ -secretase complex, two histone deacetylase co-repressors and three co-activators of the DNA binding protein with one highly expressed putative histone acetyltransferase. Additionally, 16 genes with a Notch domain (IPR000800) including Esi0061_0098, described by Le Bail *et al.* [101] as downregulated in the *Ectocarpus* developmental mutant – *etoile*, were present. Regarding the Hedgehog pathway, nine genes with similarity to Patched receptor (Ptc) of Hedgehog (containing both Patched (IPR003392) and SSD (IPR00731) domains) were abundant in gametes and one gene with Hint (Hedgehog/Intein N-terminal domain (SMART00306)) was low expressed only in females. Ptc and hint-domain proteins as well as Nicastrin and Notch-domain containing proteins were present during sexual reproduction in pennate diatom *Seminavis robusta* [102], although their involvement in cell-cell interaction is unknown and awaits further research.

Pheromone biosynthesis

Brown algal pheromones are C-11 hydrocarbon compounds derived from fatty acids [103]. Female gametes of *Ectocarpus* use arachidonic acid as a precursor of ectocarpene [104] and accumulate large reserves of phosphoglyceride PX, rich in arachidonic and eicosa-pentaenoic acid, in their plasma membrane [105]. The hypothesized synthesis pathway involves lipoxygenase to form a peroxidised lipid and hydroperoxide lyase (LOX) for cleavage at the peroxidized site to C-11 hydrocarbon and conjugated oxoacid as a by-product [103]. GO and KEGG analyses revealed few lipoxygenases upregulated in female gametes, but no homologues of hydroperoxide lyases (HPL). Two Allene Oxide Synthases (AOS) indicated as putative hydroperoxide-lyases in pheromone pathway by Cock *et al.* [18] were also not expressed. Nevertheless, it could be possible that *Ectocarpus* LOX exhibits a double activity, like PpLOX1 from the moss *Physcomitrella patens*. Lipoxygenase from *Physcomitrella*

combines the function of hydroperoxidase liase and acts on 18–22 carbon chains substrates [106]. It is also significantly similar to Esi0424_0006 LOX from *Ectocarpus* ($E = 6e-29$ (43%)).

Ectocarpus eggs are significantly enriched in genes related to glutathione (GSH), namely glutathione synthases and glutathione S-transferase. Glutathione as a radical scavenger prevents damage of cellular components caused by reactive oxygen species (ROS), such as peroxides [107]. Thus glutathione synthesis might be female's cytoprotective strategy against oxidative damage in the presence of peroxidized lipids during pheromone synthesis. Additionally, the presence of particularly arachidonic acid, which is accumulated as a pheromone precursor in *Ectocarpus*, induced glutathione synthesis in human fibroblasts [108].

RT-PCR validation

Ten genes that were identified with a high level of significance were selected to confirm the RNA-Seq results via qRT-PCR. To find the best normalization genes for gamete libraries, we investigated the expression of housekeeping genes reported by Le Bail [109] for microarray experiments. After analysis with geNorm [110] dynein and ribosomal protein 26S showed the smallest relative stability M-value ($M = 0.27$) across male and female gamete samples and were selected for normalization. Real-time PCR results were in general consistent with the direction of relative expression changes obtained by RNA-Seq, with a Pearson coefficient R of \log_2 (Fold Change) equal to 0.53, indicating a positive correlation between qPCR and RNA-Seq data. However, differences in the exact fold change values were observed (Table 2). Furthermore, the most stable 'housekeeping genes' as identified by qPCR in a previous report [109] including

ubiquitin conjugating enzyme (UBCE), alpha tubulin (TUA), actin related protein (ARP2.1) and translation elongation factor 1 alpha (EF1a), showed only statistically non-significant relative changes of <1.5-fold (\log_2 -ratio <0.58) in expression.

Conclusions

Here we provide the first to our knowledge, comparative analysis of protist gametes' transcriptomes. One of the key findings of this study is that *Ectocarpus* gametes equal the intricate transcriptomes of oogamous species [9,11,111-113]. Most of the transcribed genes may not have an evident role before fertilization, nor are they necessarily translated, but they may be crucial during post-fertilization development as in plant and animal systems [114-116]. A large set of the expressed genes is common to somatic tissues, which implies their core metabolic functions and presumably also a role in the parthenosporophyte development. However, 4,117 genes in the *Ectocarpus* gametes' transcriptome are differentially regulated and one-third of the identified transcripts seem to be gamete specific, with primary functions in signal transduction and RNA processing. It is remarkable that within the morphologically identical isogametes, the transcriptome profile is substantially divergent, reflecting the early establishment of distinct sexual roles. Both males and females are able to regulate levels of mRNA engaged in many cellular processes. The female transcriptome is depleted in genes related to chromatin organization and enriched in genes with function in cell wall biogenesis, vesicular transport, lipid metabolism with pheromone synthesis, gene expression and signaling. In male gametes a significant part of the upregulated genes relates to microtubule based movement and ion

Table 2 Validation of SOLiD based gene expression profiles by Real-Time PCR

Gene name	Gene function	Log ₂ (Average relative expression) ^a		Validation (yes/no)
		RT-PCR	SOLiD	
Esi0102_0070	Arf1, ARF family GTPase	-1.93	-2.05	Y
Esi0067_0029	long chain acyl-coA synthetase	-4.19	0.49	N
Esi0069_0059	Mannuronan C-5-epimerase	-2.98	0.06	N
Esi0101_0018	Tubular mastigoneme-related protein	6.16	4.72	Y
Esi0104_0023	GPCR-like protein	4.72	2.22	Y
Esi0130_0068	PKD/REJ-like protein	0.62	2.22	Y
Esi0418_0017	MORN motif precursor	4.95	32.19	Y
Esi0123_0020	hypothetical protein	-7.15	-31.61	Y
Esi0161_0002	Metal ion transporter-like protein	3.50	-32.10	N
Esi0098_0063	hypothetical protein	-4.92	-31.61	Y

^aRelative expression is calculated as a ratio of expression levels in male/female gametes to indicate genes up- or downregulated in male gametes. A gene is considered differentially expressed if its relative expression is twofold or greater.

flux as well as signal transduction. These results can be linked to previously described gamete characteristics in *Ectocarpus* and sister species, like active swimming in males with a tight relation to ion dynamics [52], vesicle protrusions in settled females [23] pheromone production [25] and DNA dispersion in egg nuclei [23,117]. In addition, our data confirm that transcripts related to cell wall biogenesis are deposited in female gametes before fertilization. We also revise the proposed pheromone pathway and imply the potential role of glutathione in maintaining the cell oxidative balance. The comparative RNA-Seq analysis presented here revealed a number of signaling pathways potentially involved in gamete recognition and fertilization. In particular, genes related to phosphatidylinositol signaling, GPCR receptors, REJ-like proteins and sulphonyltransferases were found, providing new insight into the mechanism of gamete coupling. Similar results, with female-biased genes related to carbohydrate metabolism and male-specific transcripts with role in signaling were obtained when reproductive tissues from an oogamous brown alga *Fucus vesiculosus* were investigated [118]. Furthermore, the identification of differentially expressed transcription factors (like MYB or NIN-proteins) brings potential for discovery of sex specific gene expression regulators.

Taken together, we demonstrated a highly functional specialization in morphologically identical isogametes of *Ectocarpus*. Further insights into activated genes and pathways regulating gamete differentiation will result not only in better understanding of these reproductive cells and their interactions during fertilization but may also link sex determination to the formation of functional male and female gametes and shed light on the forces shaping the evolution of different sexes.

Methods

Culture conditions and gamete harvesting

Ectocarpus siliculosus (Ectocarpales, Phaeophyceae) unialgal strain NZKU 1–3 male gametophyte (CCAP 1310/56) and NZKU 32-22-21 female gametophyte obtained from a meiospore of NZKU z32 (CCAP 1318/85) were cultivated at 12°C in natural sea water enriched with modified Provasoli ES [119] with 14 h light/10 h darkness cycles ($30 \mu\text{mol} \times \text{m}^{-2} \times \text{s}^{-1}$ flux density). Both gametophytes descend from a single diploid sporophyte collected in Kaikoura, New Zealand representing '*Ectocarpus* lineage 4' according to [120]. To induce gamete release fertile gametophytes were transferred to Petri dishes with residual water only and kept overnight at 4°C in the dark. Gamete release was induced by immersing cultures in PES in direct light at room temperature. Gametes were collected using a micropipette, transferred into 1.5 ml Eppendorf tubes and pelleted at $5,000 \times g$ for 5 minutes. Gamete pellets were

flash-frozen in liquid nitrogen and stored at -80°C before RNA extraction.

RNA extraction and sequencing

Total RNA was isolated using an XS RNA extraction kit (Machery-Nagel) or RNeasy Plant Mini kit (Qiagen) according to manufacturer's instructions. An additional DNase digestion step was performed in solution with RNase Free Turbo DNase (Ambion). The concentration and purity of all samples was measured with a Nano-Drop spectrophotometer (ND-1000, Thermo) and the sample integrity was checked on a 1% agarose gel. Approximately 20 μg of total RNA from each type of gamete was rRNA depleted and shredded prior to cDNA synthesis using the SOLiD™ Total RNA-Seq Kit. Male and female samples were barcoded and prepared cDNA libraries were pooled and sequenced with a SOLiD 3 System (Applied Biosystems) at Cofactor Genomics (Missouri, USA).

Mapping reads to the reference genome

SOLiD sequence reads were trimmed from adaptors and filtered for full 50 bp length. Reads were mapped to the reference genome [121] using SHRiMP2 [122] with a threshold score for full Smith-Waterman alignment set to 60%. Raw sequence data were first aligned against the *Ectocarpus siliculosus* rDNA sequences to check for depletion efficiency (rRNA contamination was estimated approximately 0.55% for female and 0.12% for male library) and then to the *Ectocarpus* genome. With the observed base quality drop towards the read's end and considering that the sequencing data were obtained from a different strain than the sequenced one, we used less stringent conditions for alignment scores and filtered reads based on mapping quality parameters. The statistical significance of top scoring hits was calculated using the Probcalc module of SHRiMP2 and only unique mappings with 'normodds' value ≥ 0.7 were selected. The same filtering parameters were used to align raw data against the mitochondrial and chloroplast genome of *Ectocarpus*. Additionally Tophat software [123] was used to identify reads mapped in exon-exon splice junctions, allowing 1 mismatch and an intron length of maximum 5000 bp.

Estimation of transcript abundance and differential gene expression analysis

We used HTSeq-count [124] to locate and count aligned reads within annotated genes, based on the available *Ectocarpus siliculosus* gene set at the OrcaE platform (<http://bioinformatics.psb.ugent.be/orcae/overview/Ectsi>). We also determined the number of reads mapped in exon, intron, 3' UTR and 5' UTR regions. Only exon mapped reads were considered in further analysis. Read processing involved filtering based on the number of reads per CDS,

Table 3 PCR primers used in this study for Real-Time PCR experiments

Gene name	Oligonucleotides		PCR product length [bp]
	Forward	Reverse	
Esi0102_0070	CTCAGCACTGCAGTCGTTAC	CGCGATCCAAGTGTAACAAGG	166
Esi0067_0029	GCTGAAGTATCTCGACGGGA	TCTCATCGTACGGTCAACCC	220
Esi0069_0059	GAGATGCAACAACGTCGAGA	TCGAACGTGTTGTTGGTGAT	249
Esi0101_0018	AGATCAAGCTGGACAGGC	TGTGTATCGCAGTTCTCATT	253
Esi0104_0023	CCAACGCTCAGGTTTCGCA	CCGTCCATGGCTCTCTCT	220
Esi0130_0068	ATCGGGGCCTTTCTCTCC	TGAAGGGAAGATCGCGATTC	147
Esi0418_0017	TTTGAGGGTGGCAAATAACC	CGTGTCTCTCCCTCTCTCG	212
Esi0123_0020	CCTCCCTACGTCACCAAGAA	CACATCTTGTCTCGTCTGCTT	239
Esi0161_0002	ACACAAGCCATTCCGATCAT	AGCGGGTACAACCATAAACG	182
Esi0098_0063	ATTGGCGTCGGGTTGACT	TACCTTCCGATTGTGAGC	163
Esi0298_0008	ATGTCCGAAGACATGCAACA	TGGTAACGTAGGACCCAAA	167
Esi0072_0068	GAACCACGGAAGGAACAAGA	GGAGGGCGTAGTTGTCGAAC	176

the covered length, and those with less than 5 reads mapped or covering less than 51 bp were discarded. These data were compiled into the gene expression table that served as input into the edgeR package for R [125]. Library normalization was done using the trimmed mean of M-values method (TMM) [126] and Exact-Test was used to determine differentially expressed genes with $P = <0.01$ and $FDR = <0.05$.

GO and KEGG enrichment analysis

To classify expressed genes, all sequences were annotated with KEGG orthology using KOBAS [34] and Gene Ontology (GO) categories using Blast2GO [127]. These automatic annotations were used to investigate overrepresented pathways and GOs by comparison of individual libraries to all annotated genes in *Ectocarpus*. Overexpressed KEGG pathways were identified using the KOBAS web-platform [34] and a hypergeometric test with Multiple Testing Correction of FDR [128]. Overrepresented GO terms were identified with Blast2GO and Fisher's Exact Test with Multiple Testing Correction of FDR [128].

Validation of RNA-Seq data by qRT-PCR

Quantitative real-time PCR was used to validate differential expression of ten selected genes (Table 2) and primers were designed using Primer3 software [129] with default settings (Table 3). cDNA synthesis was carried out on 1 µg of total RNA samples using oligo(dT)₁₂₋₁₈ primer (Invitrogen) and GOScript reverse transcriptase (Promega) according to the manufacturer's instructions. The qPCR reactions were performed in a 384-well thermocycler (LightCycler 480, Roche) with SYBR green chemistry (LightCycler 480 SYBR Green I Master mix, Roche) using listed conditions: 15 min at 95°C, followed by 40

cycles of 15 sec at 95°C, 20 sec at 50°C, and 30 sec at 72°C. Two biological replicates were run for both male and female cDNA samples and each sample was technically duplicated. Amplification specificity was measured with a melting curve by heating the sample from 65 to 97°C and the product size was checked on 1% agarose gel with GeneRuler™ 1 kb DNA Ladder (Fermentas). Absence of contaminating genomic DNA was checked with No-RT control PCR prior to cDNA synthesis. Normalization genes were selected using geNorm [110] and the relative gene expression values were calculated in qBASE v.1.3.5. [130].

Additional file

Additional file 1: Additional file Table S1. List of genes expressed in *Ectocarpus* gametes. **Additional file Table S2.** *Ectocarpus* gametes' 100 most expressed genes. **Additional file Table S3.** Gene Ontology enrichment of gametes' all expressed genes. **Additional file Table S4.** List of gametes' differentially expressed genes. **Additional file Table S5.** Gene Ontology enrichment of gametes' differentially expressed genes. **Additional file Table S6.** Genes associated with upregulated pathways described in Results and Discussion.

Abbreviations

Bp: Base pair; PCR: Polymerase chain reaction; TMM: Trimmed mean of M values; GO: Gene ontology; KEGG: Kyoto Encyclopedia of Genes and Genomes; FDR: False discovery rate; IFT: Intraflagellar transport; CESA: Cellulose synthase; ST: Sulfotransferase; TF: Transcription factor; TFP: Trifluoperazine; GSH: Glutathione; ROS: Reactive oxygen species.

Competing interest

The authors declare that they have no competing interests.

Authors' contributions

AL prepared the NGS libraries, performed the analyses of RNA sequencing data and drafted the manuscript. SD carried out the qRT-PCR experiments. ODC and EVD designed and coordinated the study and drafted the manuscript. All authors read and approved the final manuscript.

Acknowledgements

This work was funded by BOF Grant 09/24 J/117, Ghent University, Belgium. We gratefully acknowledge Dieter Müller for providing the *Ectocarpus* strain used in this study and for helpful instructions on culturing. We thank Erwan Corre for guidance and advice in setting up the bioinformatic analysis as well as Susana Coelho and Mark Cock for helpful discussions and words of encouragement.

Author details

¹Phycology Research Group and Center for Molecular Phylogenetics and Evolution, Ghent University, Krijgslaan 281, Building S8, 9000 Ghent, Belgium.

²Department of Molecular Biotechnology, Laboratory of Biochemistry and Glycobiology, Ghent University, Coupure Links 653, 9000 Ghent, Belgium.

Received: 8 April 2013 Accepted: 17 December 2013

Published: 21 December 2013

References

- Cavaliere-Smith T: **Origins of the machinery of recombination and sex.** *Heredity* 2002, **88**:125.
- Ramesh MA, Malik S-B, Logsdon JM Jr: **A phylogenomic inventory of meiotic genes: Evidence for sex in Giardia and an early Eukaryotic origin of meiosis.** *Curr Biol* 2005, **15**:185–191.
- Maynard Smith J: *The Evolution of Sex.* Cambridge: Cambridge University Press; 1978.
- Stearns SC: *The Evolution of Sex and Its Consequences.* Basel: Birkhaeuser Verlag; 1987.
- Bell G: **The evolution of anisogamy.** *J Theor Biol* 1978, **73**:247–270.
- Kirk DL: **Oogamy: Inventing the Sexes.** *Curr Biol* 2006, **16**:R1028–R1030.
- Dadoune J-P, Siffroi J-P, Alfonsi M-F: **Transcription in haploid male germ cells.** *Int Rev Cytol* 2004, **237**:1–56.
- Okada T, Singh MB, Bhalla PL: **Transcriptome profiling of Liliium longiflorum generative cells by cDNA microarray.** *Plant Cell Rep* 2007, **26**:1045–1052.
- Borges F, Gomes G, Gardner R, Moreno N, McCormick S, Feijo JA, Becker JD: **Comparative transcriptomics of Arabidopsis sperm cells.** *Plant Physiol* 2008, **148**:1168–1181.
- Vallée M, Aiba K, Piao Y, Palin M-F, Ko MSH, Sirard M-A: **Comparative analysis of oocyte transcript profiles reveals a high degree of conservation among species.** *Reproduction* 2008, **135**:439–448.
- Wuest SE, Vijverberg K, Schmidt A, Weiss M, Gheyselinck J, Lohr M, Wellmer F, Rahnenfuhrer J, Von Mering C, Grossniklaus U: **Arabidopsis female gametophyte gene expression map reveals similarities between plant and animal gametes.** *Curr Biol* 2010, **20**:506–512.
- Ohnishi T, Takanashi H, Mogi M, Takahashi H, Kikuchi S, Yano K, Okamoto T, Fujita M, Kurata N, Tsutsumi N: **Distinct gene expression profiles in egg and synergid cells of rice as revealed by cell type-specific microarrays.** *Plant Physiol* 2011, **155**:881–891.
- Ferris P, Olson B, De Hoff PL, Douglass S, Casero D, Prochnik S, Geng S, Rai R, Grimwood J, Schmutz J, Nishii I, Hamaji T, Nozaki H, Pellegrini M, Umen JG: **Evolution of an expanded sex-determining locus in Volvox.** *Science* 2010, **328**:351–354.
- Umen JG: **Evolution of sex and mating loci: An expanded view from Volvocine algae.** *Curr Opin Microbiol* 2011, **14**:634–641.
- Hoekstra RF: **The evolution of sexes.** *Experientia Supplementum* 1987, **55**:59–91.
- Bell G: **The evolution of the life cycle of brown seaweeds.** *Biol J Linn Soc* 1997, **60**:21–38.
- Baldauf SL: **The deep roots of Eukaryotes.** *Science* 2003, **300**:1703–1706.
- Cock JM, Sterck L, Rouze P, Scornet D, Allen AE, Amoutzias G, Anthouard V, Artiguenave F, Aury JM, Badger JH, Beszteri B, Billiau K, Bonnet E, Bothwell JH, Bowler C, Boyen C, Brownlee C, Carrano CJ, Charrier B, Cho GY, Coelho SM, Collen J, Corre E, Da Silva C, Delage L, Delaroque N, Dittami SM, Doubeau S, Elias M, Farnham G, et al: **The Ectocarpus genome and the independent evolution of multicellularity in brown algae.** *Nature* 2010, **465**:617–621.
- Silberfeld T, Leigh JW, Verbruggen H, Cruaud C, De Reviers B, Rousseau F: **A multi-locus time-calibrated phylogeny of the brown algae (Heterokonta, Ochrophyta, Phaeophyceae): Investigating the evolutionary nature of the "brown algal crown radiation".** *Mol Phylogenet Evol* 2010, **56**:659–674.
- Brownlee C, Bouget F-Y, Corellou F: **Choosing sides: establishment of polarity in zygotes of fucoid algae.** *Semin Cell Dev Biol* 2001, **12**:345–351.
- Bisgrove SR: **Cytoskeleton and early development in fucoid algae.** *J Integr Plant Biol* 2007, **49**:1192–1198.
- Coelho SM, Peters AF, Charrier B, Roze D, Destombe C, Valero M, Cock JM: **Complex life cycles of multicellular eukaryotes: New approaches based on the use of model organisms.** *Gene* 2007, **406**:152–170.
- Callow ME, Evans LV, Bolwell GP, Callow JA: **Fertilization in brown algae. I. SEM and other observations on Fucus serratus.** *J Cell Sci* 1978, **32**:45–54.
- Bolwell GP, Callow JA, Callow ME, Evans LV: **Fertilization in brown algae. II. Evidence for lectin-sensitive complementary receptors involved in gamete recognition in Fucus serratus.** *J Cell Sci* 1979, **36**:19–30.
- Müller DG, Schmid CE: **Qualitative and quantitative determination of pheromone secretion in female gametes of Ectocarpus siliculosus (Phaeophyceae).** *Biol Chem H-S* 1988, **396**:647–653.
- Brawley SH: **Fertilization in natural populations of the dioecious brown alga Fucus ceranoides and the importance of the polyspermy block.** *Mar Biol* 1992, **113**:145–157.
- Cock JM, Sterck L, Ahmed S, Allen AE, Amoutzias G, Anthouard V, Artiguenave F, Arun A, Aury J-M, Badger JH, Beszteri B, Billiau K, Bonnet E, Bothwell JH, Bowler C, Boyen C, Brownlee C, Carrano CJ, Charrier B, Cho GY, Coelho SM, Collén J, Le Corguillé G, Corre E, Dartevielle L, Da Silva C, Delage L, Delaroque N, Dittami SM, Doubeau S, et al: **The Ectocarpus genome and brown algal genomics.** In *Advances in Botanical Research*, Volume 64. London: Academic Press Ltd – Elsevier Science Ltd; 2012:141–184.
- Müller DG: **Generationswechsel, kernphasenwechsel und sexualität der braunalge Ectocarpus siliculosus im kulturversuch.** *Planta* 1967, **75**:39–54.
- Müller DG: **Life-cycle of Ectocarpus siliculosus from Naples, Italy.** *Nature* 1964, **203**:1402–1402.
- Schmid CE: **Cell-cell-recognition during fertilization in Ectocarpus siliculosus (Phaeophyceae).** *Hydrobiologia* 1993, **260/261**:437–443.
- Peters AF, Mann AD, Cordova CA, Brodie J, Correa JA, Schroeder DC, Cock JM: **Genetic diversity of Ectocarpus (Ectocarpales, Phaeophyceae) in Peru and northern Chile, the area of origin of the genome-sequenced strain.** *New Phytol* 2010, **188**:30–41.
- Werner T: **Next generation sequencing in functional genomics.** *Brief Bioinform* 2010, **11**:499–511.
- Dittami SM, Scornet D, Petit JL, Segures B, Da Silva C, Corre E, Dondrup M, Glatting KH, König R, Sterck L, Rouze P, Van de Peer Y, Cock JM, Boyen C, Tonon T: **Global expression analysis of the brown alga Ectocarpus siliculosus (Phaeophyceae) reveals large-scale reprogramming of the transcriptome in response to abiotic stress.** *Genome Biol* 2009, **10**:R66.
- Wu J, Mao X, Cai T, Luo J, Wei L: **KOBAS server: a web-based platform for automated annotation and pathway identification.** *Nucleic Acids Res* 2006, **34**:W720–W724.
- Pedersen LB, Rosenbaum JL: **Intraflagellar transport (IFT): Role in ciliary assembly, resorption and signalling.** In *Ciliary Function in Mammalian Development*. Edited by Yoder BK. San Diego: Elsevier Academic Press Inc; 2008. 85:23–61.
- Bouck GB: **The structure, origin, isolation, and composition of the tubular mastigonemes of the Ochromonas flagellum.** *J Cell Biol* 1971, **50**:362–384.
- Wang Q, Pan J, Snell WJ: **Intraflagellar transport particles participate directly in cilium-generated signaling in Chlamydomonas.** *Cell* 2006, **125**:549–562.
- Armbrust EV: **Identification of a new gene family expressed during the onset of sexual reproduction in the centric diatom Thalassiosira weissflogii.** *Appl Environ Microbiol* 1999, **65**:3121–3128.
- Honda D, Shono T, Kimura K, Fujita S, Iseki M, Makino Y, Murakami A: **Homologs of the Sexually Induced Gene 1 (sig1) product constitute the Stramenopile mastigonemes.** *Protist* 2007, **158**:77–88.
- Yamagishi T, Motomura T, Nagasato C, Kawai H: **Novel proteins comprising the Stramenopile tripartite mastigoneme in Ochromonas danica (Chrysophyceae).** *J Phycol* 2009, **45**:1110–1115.
- Armbrust EV, Galindo HM: **Rapid evolution of a sexual reproduction gene in centric diatoms of the genus Thalassiosira.** *Appl Environ Microbiol* 2001, **67**:3501–3513.
- Sorhannus U, Kosakovsky Pond S: **Evidence for positive selection on a Sexual Reproduction Gene in the diatom genus Thalassiosira (Bacillariophyta).** *J Mol Evol* 2006, **63**:231–239.
- Darszon A, Guerrero A, Galindo BE, Nishigaki T, Wood CD: **Sperm-activating peptides in the regulation of ion fluxes, signal transduction and motility.** *Int J Dev Biol* 2008, **52**:595–606.
- Neill AT, Vacquier VD: **Ligands and receptors mediating signal transduction in sea urchin spermatozoa.** *Reproduction* 2004, **127**:141–149.

45. Hansbrough JR, Kopf GS, Garbers DL: **The stimulation of sperm metabolism by a factor associated with eggs and by 8-bromo-guanosine 3',5'-monophosphate.** *Biochim Biophys Acta* 1980, **630**:82–91.
46. Babcock DF, Bosma MM, Battaglia DE, Darszon A: **Early persistent activation of sperm K⁺ channels by the egg peptide speract.** *Proc Natl Acad Sci U.S.A.* 1992, **89**:6001–6005.
47. Lee HC, Garbers DL: **Modulation of the voltage-sensitive Na⁺/H⁺ exchange in sea urchin spermatozoa through membrane potential changes induced by the egg peptide speract.** *J Biol Chem* 1986, **261**:16026–16032.
48. Granados-Gonzalez G, Mendoza-Lujambio I, Rodriguez E, Galindo BE, Beltrán C, Darszon A: **Identification of voltage-dependent Ca²⁺ channels in sea urchin sperm.** *FEBS Lett* 2005, **579**:6667–6672.
49. Galindo BE, Beltrán C, Cragoe EJ Jr, Darszon A: **Participation of a K⁽⁺⁾ channel modulated directly by cGMP in the speract-induced signaling cascade of stronglycentrotus purpuratus sea urchin sperm.** *Dev Biol* 2000, **221**:285–294.
50. Strünker T, Weyand I, Bönigk W, Van Q, Loogen A, Brown JE, Kashikar N, Hagen V, Krause E, Kaupp UB: **A K⁺ –selective cGMP-gated ion channel controls chemosensation of sperm.** *Nat Cell Biol* 2006, **8**:1149–1154.
51. Shiba K, Baba SA, Inoue T, Yoshida M: **Ca²⁺ bursts occur around a local minimal concentration of attractant and trigger sperm chemotactic response.** *PNAS* 2008, **105**:19312–19317.
52. Maier I, Calenberg M: **Effect of extracellular Ca²⁺ and Ca²⁺ –antagonists on the movement and chemoorientation of male gametes of Ectocarpus siliculosus (Phaeophyceae).** *Botanica Acta* 1994, **107**:451–460.
53. Michel G, Tonon T, Scornet D, Cock JM, Kloareg B: **The cell wall polysaccharide metabolism of the brown alga Ectocarpus siliculosus. Insights into the evolution of extracellular matrix polysaccharides in Eukaryotes.** *New Phytol* 2010, **188**:82–97.
54. Kloareg B, Quatrano R: **Structure of the cell-walls of marine-algae and ecophysiological functions of the matrix polysaccharides.** *Oceanogr Mar Biol* 1988, **26**:259–315.
55. Callow ME, Coughlan SJ, Evans LV: **The role of Golgi bodies in polysaccharide sulphation in Fucuszygotes.** *J Cell Sci* 1978, **32**:337–356.
56. Schnaar RL, Suzuki A, Stanley P: **Glycosphingolipids.** In *Essentials of Glycobiology*. 2nd edition. Edited by Varki A, Cummings RD, Esko JD, et al. Cold Spring Harbor (NY): Cold Spring Harbor Laboratory Press; 2009:2009.
57. Alves A-P, Mulloy B, Diniz JA, Mourão PAS: **Sulfated polysaccharides from the egg jelly layer are species-specific Inducers of acrosomal reaction in sperms of sea urchins.** *J Biol Chem* 1997, **272**:6965–6971.
58. Mourão PAS: **A carbohydrate-based mechanism of species recognition in sea urchin fertilization.** *Braz J Med Biol Res* 2007, **40**:5–17.
59. Gunaratne HJ, Moy GW, Kinukawa M, Miyata S, Mah SA, Vacquier VD: **The 10 sea urchin receptor for egg jelly proteins (SpREJ) are members of the polycystic kidney disease-1 (PKD1) family.** *BMC Genomics* 2007, **8**:235.
60. Baker JRJ, Evans LV: **The ship fouling alga Ectocarpus.** *Protoplasma* 1973, **77**:1–13.
61. Maier I: **The fine structure of the male gamete of Ectocarpus siliculosus (Ectocarpales, Phaeophyceae).2. The flagellar apparatus.** *Eur J Phycol* 1997, **32**:255–266.
62. Kirchhausen T: **Three ways to make a vesicle.** *Nat Rev Mol Cell Biol* 2000, **1**:187–198.
63. Novick P, Zerial M: **The diversity of Rab proteins in vesicle transport.** *Curr Opin Cell Biol* 1997, **9**:496–504.
64. Zerial M, McBride H: **Rab proteins as membrane organizers.** *Nat Rev Mol Cell Biol* 2001, **2**:107–117.
65. Schoenwaelder MEA, Wiencke C: **Phenolic compounds in the embryo development of several Northern Hemisphere Fucooids.** *Plant Biol* 2000, **2**:24–33.
66. Charrier B, Coelho SM, Le Bail A, Tonon T, Michel G, Potin P, Kloareg B, Boyen C, Peters AF, Cock JM: **Development and physiology of the brown alga Ectocarpus siliculosus: two centuries of research.** *New Phytol* 2008, **177**:319–332.
67. Rayko E, Maumus F, Maheswari U, Jabbari K, Bowler C: **Transcription factor families inferred from genome sequences of photosynthetic stramenopiles.** *New Phytol* 2010, **188**:52–66.
68. Kasahara RD, Portereiko MF, Sandaklie-Nikolova L, Rabiger DS, Drews GN: **MYB98 is required for pollen tube guidance and synergid cell differentiation in Arabidopsis.** *Plant Cell* 2005, **17**:2981–2992.
69. Punwani JA, Rabiger DS, Drews GN: **MYB98 positively regulates a battery of synergid-expressed genes encoding filiform apparatus-localized proteins.** *Plant Cell* 2007, **19**:2557–2568.
70. Ferris PJ, Goodenough UW: **Mating type in Chlamydomonas is specified by mid, the minus-dominance gene.** *Genetics* 1997, **146**:859–869.
71. Khurana JS, Theurkauf W: **piRNAs, transposon silencing, and Drosophila germline development.** *J Cell Biol* 2010, **191**:905–913.
72. Dixon NM, Leadbeater BSC, Wood KR: **Frequency of viral infection in a field population of Ectocarpus fasciculatus (Ectocarpales, Phaeophyceae).** *Phycologia* 2000, **39**:258–263.
73. Müller DG, Westermeier R, Morales J, Reina GG, Del Campo E, Correa JA, Rometscha E: **Massive prevalence of viral DNA in Ectocarpus (Phaeophyceae, Ectocarpales) from two habitats in the North Atlantic and South Pacific.** *Bot Mar* 2000, **43**:157–159.
74. Zambounis A, Elias M, Sterck L, Maumus F, Gachon CMM: **Highly dynamic exon shuffling in candidate pathogen receptors ... What if brown algae were capable of adaptive immunity?** *Mol Biol Evol* 2012, **29**:1263–1276.
75. Rojas AM, Fuentes G, Rausell A, Valencia A: **The Ras protein superfamily: Evolutionary tree and role of conserved amino acids.** *J Cell Biol* 2012, **196**:189–201.
76. Kumakiri J, Oda S, Kinoshita K, Miyazaki S: **Involvement of Rho family G protein in the cell signaling for sperm incorporation during fertilization of mouse eggs: inhibition by Clostridium difficile toxin B.** *Dev Biol* 2003, **260**:522–535.
77. Schmitz AAP, Govek E-E, Böttner B, Van Aelst L: **Rho GTPases: Signaling, migration, and invasion.** *Exp Cell Res* 2000, **261**:1–12.
78. Schmidt A, Bickle M, Beck T, Hall MN: **The yeast phosphatidylinositol kinase homolog TOR2 activates RHO1 and RHO2 via the exchange factor ROM2.** *Cell* 1997, **88**:531–542.
79. Loewith R, Hall MN: **Target of Rapamycin (TOR) in nutrient signaling and growth control.** *Genetics* 2011, **189**:1177–1201.
80. Berman SA, Wilson NF, Haas NA, Lefebvre PA: **A novel MAP kinase regulates flagellar length in Chlamydomonas.** *Curr Biol* 2003, **13**:1145–1149.
81. Sillers PJ, Forer A: **Ca²⁺ in fertilization and mitosis: the phosphatidylinositol cycle in sea urchin gametes and zygotes is involved in control of fertilization and mitosis.** *Cell Biol Int Rep* 1985, **9**:275–282.
82. Halet G, Tunwell R, Balla T, Swann K, Carroll J: **The dynamics of plasma membrane PtdIns(4,5)P(2) at fertilization of mouse eggs.** *J Cell Sci* 2002, **115**:2139–2149.
83. Lee S-J, Shen SS: **The calcium transient in sea urchin eggs during fertilization requires the production of inositol 1,4,5-trisphosphate.** *Dev Biol* 1998, **193**:195–208.
84. Carroll DJ, Ramarao CS, Mehlmann LM, Roche S, Terasaki M, Jaffe LA: **Calcium release at fertilization in starfish eggs is mediated by phospholipase C gamma.** *J Cell Biol* 1997, **138**:1303–1311.
85. Townley IK, Roux MM, Foltz KR: **Signal transduction at fertilization: The Ca²⁺ release pathway in echinoderms and other invertebrate deuterostomes.** *Semin Cell Dev Biol* 2006, **17**:293–302.
86. Brederoo J, de Wildt P, Popp-Snijders C, Irvine RF, Musgrave A, van den Ende H: **Polyphosphoinositol lipids in Chlamydomonas eugametos gametes.** *Planta* 1991, **184**:175–181.
87. McDougall A, Shearer J, Whitaker M: **The initiation and propagation of the fertilization wave in sea urchin eggs.** *Biol Cell* 2000, **92**:205–214.
88. Goddard H, Manison NFH, Tomos D, Brownlee C: **Elemental propagation of calcium signals in response-specific patterns determined by environmental stimulus strength.** *PNAS* 2000, **97**:1932–1937.
89. Coelho SM, Taylor AR, Ryan KP, Sousa-Pinto I, Brown MT, Brownlee C: **Spatiotemporal patterning of reactive oxygen production and Ca²⁺ wave propagation in Fucus rhizoid cells.** *Plant Cell* 2002, **14**:2369–2381.
90. Wilding M, Dale B: **Sperm factor: what is it and what does it do?** *Mol Hum Reprod* 1997, **3**:269–273.
91. Wettschreck N, Offermanns S: **Mammalian G proteins and their cell type specific functions.** *Physiol Rev* 2005, **85**:1159–1204.
92. Neves SR, Ram PT, Iyengar R: **G protein pathways.** *Science* 2002, **296**:1636–1639.
93. Ward CR, Storey BT, Kopf GS: **Activation of a G protein in mouse sperm membranes by solubilized proteins of the zona pellucida, the egg's extracellular matrix.** *J Biol Chem* 1992, **267**:14061–14067.

94. Spehr M, Schwane K, Riffell JA, Barbour J, Zimmer RK, Neuhaus EM, Hatt H: **Particulate adenylate cyclase plays a key role in human sperm olfactory receptor-mediated chemotaxis.** *J Biol Chem* 2004, **279**:40194–40203.
95. Ohta K, Sato C, Matsuda T, Toriyama M, Vacquier VD, Lennarz WJ, Kitajima K: **Co-localization of receptor and transducer proteins in the glycosphingolipid-enriched, low density, detergent-insoluble membrane fraction of sea urchin sperm.** *Glycoconjugate J* 2000, **17**:205–214.
96. Bockaert J, Pin JP: **Molecular tinkering of G protein-coupled receptors: an evolutionary success.** *The EMBO Journal* 1999, **18**:1723–1729.
97. Baron M: **An overview of the Notch signalling pathway.** *Semin Cell Dev Biol* 2003, **14**:113–119.
98. Ehebauer M, Hayward P, Arias AM: **Notch, a universal arbiter of cell fate decisions.** *Science* 2006, **314**:1414–1415.
99. Bürglin TR: **Evolution of hedgehog and hedgehog-related genes, their origin from Hog proteins in ancestral eukaryotes and discovery of a novel Hint motif.** *BMC Genomics* 2008, **9**:127.
100. Gazave E, Lapébie P, Richards GS, Brunet F, Ereskovsky AV, Degnan BM, Borchiellini C, Vervoort M, Renard E: **Origin and evolution of the Notch signalling pathway: an overview from eukaryotic genomes.** *BMC Evol Biol* 2009, **9**:249.
101. Le Bail A, Billoud B, Panse SL, Chenivresse S, Charrier B: **ETOILE regulates developmental patterning in the filamentous brown alga *Ectocarpus siliculosus*.** *Plant Cell* 2011, **23**:1666–1678.
102. Gillard J: **The pennate diatom life cycle: a genetic, physiological and biochemical study using *Seminavis robusta* as a new experimental model.** *PhD thesis.* Ghent, Belgium: Ghent University; 2009.
103. Pohnert G, Boland W: **The oxylipin chemistry of attraction and defense in brown algae and diatoms.** *Nat Prod Rep* 2002, **19**:108–122.
104. Stratmann K, Boland W, Müller D: **Biosynthesis of Pheromones in Female Gametes of Marine Brown-Algae (Phaeophyceae).** *Tetrahedron* 1993, **49**:3755–3766.
105. Schmid CE: **Isolation and characterization of a new phospholipid from brown-algae-intracellular-localization and site of biosynthesis.** *J Plant Physiol* 1994, **143**:570–574.
106. Senger T, Wichard T, Kunze S, Göbel C, Lerchl J, Pohnert G, Feussner I: **A Multifunctional Lipoxygenase with Fatty Acid Hydroperoxide Cleaving Activity from the Moss *Physcomitrella patens*.** *J Biol Chem* 2005, **280**:7588–7596.
107. Sheehan D, Meade G, Foley VM, Dowd CA: **Structure, function and evolution of glutathione transferases: implications for classification of non-mammalian members of an ancient enzyme superfamily.** *Biochem J* 2001, **360**:1–16.
108. Arab K, Rossary A, Soulere L, Steghens J-P: **Conjugated linoleic acid, unlike other unsaturated fatty acids, strongly induces glutathione synthesis without any lipoperoxidation.** *Br J Nutr* 2006, **96**:811–819.
109. Le Bail A, Dittami SM, De Franco PO, Rousvoal S, Cock MJ, Toton T, Charrier B: **Normalisation genes for expression analyses in the brown alga model *Ectocarpus siliculosus*.** *BMC Mol Biol* 2008, **9**:75.
110. Vandesompele J, De Preter K, Pattyn F, Poppe B, Van Roy N, De Paepe A, Speleman F: **Accurate normalization of real-time quantitative RT-PCR data by geometric averaging of multiple internal control genes.** *Genome Biol* 2002, **3**:0034.1.
111. Masters AK, Shirras AD, Hetherington AM: **Maternal mRNA and early development in *Fucus serratus*.** *Plant J* 1992, **2**:619–622.
112. Sommerville J: **RNA-binding phosphoproteins and the regulation of maternal mRNA in *Xenopus*.** *J Reprod Fertil* 1990, **42**:225–233.
113. Engel ML, Chaboud A, Dumas C, McCormick S: **Sperm cells of *Zea* may have a complex complement of mRNAs.** *Plant J* 2003, **34**:697–707.
114. Xin H-P, Peng X-B, Ning J, Yan T-T, Ma L-G, Sun M-X: **Expressed sequence-tag analysis of tobacco sperm cells reveals a unique transcriptional profile and selective persistence of paternal transcripts after fertilization.** *Sex Plant Reprod* 2011, **24**:37–46.
115. Evisikov AV, Graber JH, Brockman JM, Hampl A, Holbrook AE, Singh P, Eppig JJ, Solter D, Knowles BB: **Cracking the egg: molecular dynamics and evolutionary aspects of the transition from the fully grown oocyte to embryo.** *Genes Dev* 2006, **20**:2713–2727.
116. Krawetz SA: **Paternal contribution: new insights and future challenges.** *Nat Rev Genet* 2005, **6**:633–642.
117. Ruthmann AC: *Methods in cell research.* Ithaca, New York: Cornell University Press; 1970.
118. Martins MJF, Mota CF, Pearson GA: **Sex-biased gene expression in the brown alga *Fucus vesiculosus*.** *BMC Genomics* 2013, **14**:294.
119. West JA, McBride DL: **Long-term and diurnal carpore discharge patterns in the Ceramiaceae, Rhodomelaceae and Delesseriaceae (Rhodophyta).** *Hydrobiologia* 1999, **398–399**:101–114.
120. Stache Crain B, Müller DG, Goff LJ: **Molecular systematics of *Ectocarpus* and *Kuckuckia* (Ectocarpales, Phaeophyceae) inferred from phylogenetic analysis of nuclear- and plastid-encoded DNA sequences.** *J Phycol* 1997, **33**:152–168.
121. *Online Resource for Community Annotation of Eukaryotes ORCAE.* [ORCAE [http://bioinformatics.psb.ugent.be/webtools/bogas]]
122. Rumble SM, Lacroute P, Dalca AV, Fiume M, Sidow A, Brudno M: **SHRIMP: Accurate mapping of short color-space reads.** *PLoS Comput Biol* 2009, **5**:e1000386.
123. Trapnell C, Pachter L, Salzberg SL: **TopHat: discovering splice junctions with RNA-Seq.** *Bioinformatics* 2009, **25**:1105–1111.
124. *HTSeq: Analysing high-throughput sequencing data with Python.* [http://www.huber.embl.de/users/anders/HTSeq/doc/overview.html]
125. Robinson MD, McCarthy DJ, Smyth GK: **edgeR: a Bioconductor package for differential expression analysis of digital gene expression data.** *Bioinformatics* 2010, **26**:139–140.
126. Robinson MD, Oshlack A: **A scaling normalization method for differential expression analysis of RNA-seq data.** *Genome Biol* 2010, **11**:R25.
127. Conesa A, Gotz S, Garcia-Gomez JM, Terol J, Talon M, Robles M: **Blast2GO: a universal tool for annotation, visualization and analysis in functional genomics research.** *Bioinformatics* 2005, **21**:3674–3676.
128. Benjamini Y, Hochberg Y: **Controlling the false discovery rate: A practical and powerful approach to multiple testing.** *J R Stat Soc B Met* 1995, **57**:289–300.
129. Rozen S, Skaletsky HJ: **Primer3 on the WWW for general users and for biologist programmers.** In *Bioinformatics Methods and Protocols: Methods in Molecular Biology.* Edited by Krawetz S, Misener S. Totowa, NJ: Humana Press; 2000:365–386.
130. Hellems J, Mortier G, Paepe AD, Speleman F, Vandesompele J: **qBase relative quantification framework and software for management and automated analysis of real-time quantitative PCR data.** *Genome Biol* 2007, **8**:R19.

doi:10.1186/1471-2164-14-909

Cite this article as: Lipinska et al.: Uncovering the genetic basis for early isogamete differentiation: a case study of *Ectocarpus siliculosus*. *BMC Genomics* 2013 **14**:909.

Submit your next manuscript to BioMed Central and take full advantage of:

- Convenient online submission
- Thorough peer review
- No space constraints or color figure charges
- Immediate publication on acceptance
- Inclusion in PubMed, CAS, Scopus and Google Scholar
- Research which is freely available for redistribution

Submit your manuscript at
www.biomedcentral.com/submit

