

RESEARCH ARTICLE

Open Access

De novo sequencing and characterization of *Picrorhiza kurrooa* transcriptome at two temperatures showed major transcriptome adjustments

Parul Gahlan^{1†}, Heikham Russiachand Singh^{2†}, Ravi Shankar^{2*}, Niharika Sharma¹, Anita Kumari¹, Vandna Chawla², Paramvir Singh Ahuja¹ and Sanjay Kumar^{1*}

Abstract

Background: *Picrorhiza kurrooa* Royle ex Benth. is an endangered plant species of medicinal importance. The medicinal property is attributed to monoterpenoids picroside I and II, which are modulated by temperature. The transcriptome information of this species is limited with the availability of few hundreds of expressed sequence tags (ESTs) in the public databases. In order to gain insight into temperature mediated molecular changes, high throughput *de novo* transcriptome sequencing and analyses were carried out at 15°C and 25°C, the temperatures known to modulate picrosides content.

Results: Using paired-end (PE) Illumina sequencing technology, a total of 20,593,412 and 44,229,272 PE reads were obtained after quality filtering for 15°C and 25°C, respectively. Available (e.g., De-Bruijn/Eulerian graph) and in-house developed bioinformatics tools were used for assembly and annotation of transcriptome. A total of 74,336 assembled transcript sequences were obtained, with an average coverage of 76.6 and average length of 439.5. Guanine-cytosine (GC) content was observed to be 44.6%, while the transcriptome exhibited abundance of trinucleotide simple sequence repeat (SSR; 45.63%) markers.

Large scale expression profiling through “read per exon kilobase per million (RPKM)”, showed changes in several biological processes and metabolic pathways including *cytochrome P450s* (CYPs), *UDP-glycosyltransferases* (UGTs) and those associated with picrosides biosynthesis. RPKM data were validated by reverse transcriptase-polymerase chain reaction using a set of 19 genes, wherein 11 genes behaved in accordance with the two expression methods.

Conclusions: Study generated transcriptome of *P. kurrooa* at two different temperatures. Large scale expression profiling through RPKM showed major transcriptome changes in response to temperature reflecting alterations in major biological processes and metabolic pathways, and provided insight of GC content and SSR markers. Analysis also identified putative CYPs and UGTs that could help in discovering the hitherto unknown genes associated with picrosides biosynthesis.

Keywords: Mevalonate, Gene expression, 2-C-methyl-D-erythritol 4-phosphate, Next generation sequencing, Phenylpropanoid, *Picrorhiza kurrooa*, Picrosides, Transcriptome

* Correspondence: ravish@ihbt.res.in; sanjayplp1@gmail.com

† Contributed equally

¹Biotechnology Division, CSIR-Institute of Himalayan Bioresource Technology (Council of Scientific and Industrial Research), P.O. Box No. 6, Palampur 176 061, Himachal Pradesh, India

²Studio of Computational Biology & Bioinformatics, CSIR-Institute of Himalayan Bioresource Technology (Council of Scientific and Industrial Research), P.O. Box No. 6, Palampur 176 061, Himachal Pradesh, India

Full list of author information is available at the end of the article

Background

Picrorhiza kurrooa Royle ex Benth. is a medicinally important endangered plant species of family Scrophulariaceae. The species is distributed between 3,000-5,000 m above mean sea level in the Himalayan region [1]. *P. kurrooa* is widely used in traditional as well as modern system of medicine for the treatment of liver disorders, fever, asthma and jaundice [2,3]. Indiscriminate and extensive harvesting and lack of organized cultivation has threatened the status of this plant in nature and is listed as “endangered species” by International Union for Conservation of Nature and Natural Resources [4]. Due to narrow distribution range, small population size and high use, the species appears among the 37 identified as top priority species for conservation and cultivation in western Himalaya.

The biological activity of *P. kurrooa* is attributed to the presence of iridoid glycosides mainly picroside I and picroside II. Studies have shown that temperature plays an important role in the biosynthesis and accumulation of picrosides [5]. A temperature of 15°C favored picrosides accumulation as compared to 25°C and this was in agreement with the expression of *1-deoxy-D-xylulose-5-phosphate synthase (DXS)* and *3-hydroxy-3-methylglutaryl-coenzyme A reductase (HMGR)*, the genes associated with picrosides biosynthesis. However, the progress in unraveling the molecular response of *P. kurrooa* at these temperatures has been impeded by the dearth of transcriptomic resources. Transcriptome sequencing is an efficient way to understand global molecular response by the plant in response to a cue [6]. Expressed sequence tags (ESTs) played a significant role in accelerating gene discovery, expression analysis, improving genome annotation, identifying splice variants, and identification of molecular markers [7-9]. Transcriptome sequencing through next generation sequencing technology provides extensive data in much shorter time period with enormous depth and coverage to facilitate understanding of major change in the metabolic processes as well as contribute to comparative transcriptomics, evolutionary genomics and gene discovery [10-15]. Illumina genome analyzer based sequencing technology (Illumina, USA) yields huge amount of short reads with high coverage. Assembling such short reads is a challenging task, more so in the absence of reference sequences. A few bioinformatics tools have been developed for *de novo* assembly using short-read sequence data [16,17], which vary in their success and application, and depends upon data specific strategies.

The present study describes the first global analysis of *P. kurrooa* transcriptome under two temperature regimes, which would serve as a blueprint of gene expression profile. The work reports a strategy for *de novo* assembly of transcriptome using short-read sequence

data generated by Illumina RNA-Seq method. Read per exon kilobase per million (RPKM) based comparative expression profiling study was done to systematically characterize the mRNAs at two temperatures and to identify the differentially regulated genes including those involved in picrosides biosynthesis. Data on *in silico* gene expression was validated by reverse transcriptase-polymerase chain reaction (RT-PCR) as well using a set of 19 genes.

Results and Discussion

Transcriptome represents the expressed portion of the genome and offers an overall view of the transcribed genes. It is a powerful tool in gene discovery and in understanding the biochemical pathways involved in physiological responses. Various techniques such as microarray, serial analysis of gene expression and massively parallel signature sequencing emerged for high throughput gene expression profiling in the past and to allow for simultaneous interrogation of gene expression on a genome-wide scale [18]. However, these techniques are time consuming and become expensive, particularly for the analysis at global level. Also, biases are introduced by the inevitable cloning step [19].

With the advent of next generation sequencing technology, transcriptome analysis takes lesser time, cost and labour, and at the same time provides major sequence coverage and depth [8]. The technology has been used with success for the analysis of transcriptomes of several plant species including *Cajanus cajan* [20], *Arabidopsis thaliana* [21,22], *Medicago truncatula* [23], *Zea mays* [24], *Hordeum vulgare* [25], *Lycopersicon esculentum* [26], *Camellia sinensis* [27], and *Cicer arietinum* [28].

The present work was carried out on *de novo* transcriptome sequencing of *P. kurrooa*, *de novo* assembly of short reads, annotation of assembled sequences at 15°C and 25°C and validation of RPKM based expression analysis by RT-PCR using selected genes. *P. kurrooa* is a medicinally important and endangered plant species. Medicinal properties are attributed to the monoterpenoids, picroside I and picroside II, which are associated with hepatoprotective activity as one of the major activities [2].

Reads generation and *de novo* sequence assembly

The *de novo* assembly of short reads without a reference genome still remains a challenge in spite of the development of many bioinformatics tools for data assembly and analysis [17,29]. Paired-end (PE) run of 36 cycles, for each of the leaf tissues collected from plants exposed to 15°C and 25°C, was performed on Illumina genome analyzer IIX platform (Illumina, USA). Bcl converter was used to produce the reads in qseq format of the PE run of genome analyzer. It contains reads, their coordinates, tile number and quality encoding. Since 3' ends of reads are prone to

sequencing error, for every 36 bp read, only 33 bases (excluding the 3 bases at 3' end) were considered for further use. A total of 27,562,496 and 49,274,224 PE reads were generated at 15°C and 25°C, respectively. After performing quality filtering, a total of 20,593,412 and 44,229,272 PE reads were obtained for 15°C and 25°C, respectively. In total 64,822,684 PE reads were obtained.

In order to select the most appropriate k-mer size for considering *de novo* assembly, SOAPdenovo was run at different k-mer size ranging between 19 to 29 mers, with read length of 33 bp [18]. The parameters recorded were the total transcripts obtained after assembling, average coverage, average transcript size, percentage of transcripts having length higher than 1,000 bp and highest transcript length. K-mer size of 23 mer emerged as the best choice for performing assembly, as it had a balance between over-represented and under-represented transcript numbers, coverage, maximum length obtained and average transcript length (Table 1). Total number of transcripts decreased linearly with the increment of k-mer size suggesting over-representation at lower k-mer and under-representation at higher k-mers. It was observed that the sequences assembled at higher k-mer were enriched for transcripts with higher coverage/higher expression. For assembly process, only those reads were considered that produced high frequency k-mer. PE module was used to perform more sensitive assembling, and utilized pair information and approximate distance between PE reads (200 bp). Gap filling was opted to produce longer scaffolds from the PE reads data, mapping into the contigs as well as gapped regions. For all the assembling steps, minimum length cut-off for assembled transcripts was set to 100 bp.

The data from the two temperature conditions were assembled separately. For 15°C assembly, a total of 31,338 assembled transcripts with average length of 403.87 bp and average coverage of 64.68 times was obtained (Table 2). Total 2,029 assembled transcripts (6.48%) had sequence length longer than 1,000 bp with the longest assembled transcript of 5,326 bp. Similarly for 25°C, 63,718 assembled transcript sequences were obtained with 434.39 bp average length and average coverage of 71.26. Total 4,988 sequences (7.82%) were longer than 1,000 bp with maximum sequence length of

5,210 bp. The difference in the number of assembled transcripts generated for 15°C and 25°C could be the result of the stress response of the plants at high temperature [30]. It is also likely that such differences in the number of assembled transcripts could be due to the technological noise that might have crept in at some stage, as reported by previous work [31]. Considering the quality of assemblies produced at two different temperatures, it appeared that increased read data could enhance the total coverage, average contig length and percentage of transcripts longer than 1 kb. Therefore, PE reads of the two lanes (15°C and 25°C) were combined, retaining the PE information. Combined *de novo* assembly was carried out with 64,822,684 filtered reads in PE form (Table 2). With this approach, a total of 74,336 transcripts were obtained, of which 9.16% were above 1,000 bp, yielding higher average coverage of 76.6, average length of 439.5 bp and maximum length of 5,759 bp. Therefore, total 74,336 transcripts, generated from pooled reads, made the final representatives for assembled sequences in this study. The related read and sequence (contigs) data have been deposited at National Centre for Biotechnology Information (NCBI) in the Short Read Archive (SRA) database and Transcriptome Shotgun Assembly (TSA) database under the accession numbers SRA048843.1 and JR808536-JR842818, respectively. Those sequences, which were either less than 200 bp or had a stretch of "N" > 14 nucleotides were not accepted by TSA and hence were presented in Additional file 1 and Additional file 2 which contains complete collection of assembled sequences.

Homology search and sequence clustering

Set of assembled sequences contained several sequences sharing similarity, causing over-representation of data for total transcript sequence measurement. Such redundancy and over-representation can be reduced by finding similar sequences either through merging them or by using a single representative sequence instead. This was done by applying sequence similarity based clustering. After performing hierarchical clustering with TIGR Gene Indices clustering tools (TGICL) using Contig Assembly Program (CAP3) and Cluster database at high identity with tolerance (CD-HIT), with minimum 90% similarity cut off,

Table 1 Effect of k-mer size on assembling performance of transcriptome

k-mer	Average coverage	Average length (bp)	Maximum length (bp)	Total transcripts	Per cent transcripts above 1000 bp
19	76.6	421.23	7102	89,988	7.54
21	76.6	432.42	6873	83,774	8.94
23	76.6	439.55	5759	74,336	9.16
25	76.6	417.5	6350	62,526	8.24
27	77.8	379.85	5097	47,389	6.73
29	86.9	333.96	4441	26,733	4.59

Table 2 Summary of transcriptome data generated on Illumina genome analyzer Iix for leaf tissue of *P. kurrooa*.

	15°C	25°C	Total/Pooled
Total number of paired-end reads	27,562,496	49,274,224	76,836,720
Number of reads obtained after quality filtering	20,593,412	44,229,272	64,822,684
Number of assembled transcripts	31,338	63,718	74,336
Average length of transcripts (in bp)	403.87	434.39	439.5
Average coverage (%)	64.68	71.26	76.6

The table shows assembly quality when assembled for reads generated at 15°C and 25°C, separately and by pooling the reads obtained at the two temperatures together. The best contigs were found for the pooled data having higher coverage and higher average transcript length

the number of unique assembled transcripts reduced from 74,336 to 72,220.

Analysis of sequences, obtained after clustering, was done for homology search against protein sequences at non-redundant (NR) databases at NCBI by BLASTX with cut off E-value of 10^{-5} . For pooled read assembled transcript sequences, significant BLAST hits were found for a total of 42,598 sequences while no hit was found for 29,622 sequences.

Another clustering step was carried out for sequences which returned significant BLAST hits. Sequences with no apparent significant identity among themselves might belong to the different parts of the same gene or may represent the isoforms. Counting them as separate transcripts would only inflate the number of unique genes. Therefore, all those transcripts were searched that exhibited significant hits and shared the best hits to the same reference sequence. A set of local scripts was written to scan for all those assembled transcript sequences that returned a common best hit and common reference gene but differed in their location. All such transcripts were clustered together and assumed as the members of associated reference sequence/gene represented. This step reduced the total number of transcripts with significant BLAST hits, from 42,598 to 28,403. Therefore, the number of actual unique genes is expected to be much lower than the total transcript sequences coming out of any *de novo* assembling tool. Such clustering approach was applied in order to get the correct number of unique genes represented by the assembled transcripts sequences, which could be over-represented otherwise. A complete detail of grouped sequences has been made available in Additional file 3. Related materials and associated annotations for sequences representing the group sequences as the best one is available at the URL: http://scbb.ihbt.res.in/Picro_information. Remaining 29,622 transcript sequences, with no significant homologous reference sequence, too could display the above mentioned clustering property and their total number might go lower than the observed. However, in this part of the study, ORFs were derived in six frames of these unknown sequences and looked for possible functional domains across the conserved domain databases. Interestingly, for 1,225 sequences, a few significant conserved domains

were identified. Some of the highly represented domains were Fibronectin attachment protein (FAP), large tegument protein, extensin-like, formin homology region 1, TT-viral orf1, cysteine-rich transmembrane module stress tolerance and fibrillar (Additional file 4). These hitherto unknown sequences might render the function characteristic to the domain.

Validation of assembled sequences against the ESTs of *P. kurrooa*

The assembled sequences obtained from pooled reads were validated by sequence based alignments against ESTs of *P. kurrooa* submitted at NCBI dbEST by our group. For 500 submitted ESTs (Additional file 5; this has accession numbers of the submitted ESTs), BLASTN analysis against the assembled transcripts was performed with an E-value threshold of 10^{-05} . The sequences were analyzed for mis-assemblies and manually checked for all alignment conditions. Besides this, manual assessment of alignment for all transcripts with their BLASTX hits against protein NR databases at NCBI was also performed. Significant hits were observed for 417 sequences (83.4%), while no hit could be obtained for 83 ESTs from the assembled transcript set. Also, most of the assembled transcript sequences were found to be aligned correctly and in continuous form, with average identity of 96.35%, suggesting good assembly quality. The unmappable unigenes in *P. kurrooa* might include fusion transcripts, relatively short and low quality singletons, UTR sequences far from the translation start or stop sites (> 1,000 bp), and those having incomplete coverage by the genome. It has been reported that even in *A. thaliana* around 13% of the ESTs could not be aligned to the predicted genes [32] and in human only 64% of the reads could be mapped to the RefSeq database of well annotated human genes [33]. Detailed information regarding this part of analysis is mentioned at URL http://scbb.ihbt.res.in/Picro_information.

Utilization of transcriptome data for analysis of guanine-cytosine (GC) content and identification of simple sequence repeats (SSRs) markers

Next generation sequencing offered an opportunity for the analysis of GC content among unigenes and expanded the

scope for molecular markers such as SSRs. GC content gives important indication about the genes and genomic composition including evolution, gene structure (intron size and number), gene regulation and is an indicator of stability of DNA [34]. Average GC content of *P. kurrooa* transcripts was 44.6% (Additional file 6), which is in range of GC levels of coding sequences in dicots (44-47%) [35].

SSRs or microsatellites markers have diagnostic and functional significance, and have been usually associated with functional and phenotypic variations. SSRs are multi-allelic in nature, reproducible, highly abundant, cover the genome extensively and exhibit co-dominant inheritance. Transcriptome SSR markers exhibit high interspecific transferability [36]. Due to the limitation of genomic data available, EST databases have been increasingly screened for development of genic SSRs [37-41]. *P. kurrooa* is a cross pollinated species and hence the seed raised population will have variability. Variability in vegetative growth as well as for picosides content of wild populations of *P. kurrooa* has also been reported [42]. Also, considerable variation exists in picosides content for plants collected from different locations [43]. The identification of SSRs in *P. kurrooa* will help in distinguishing closely related individuals and will also provide useful criteria for enriching and analyzing variation in the gene pool of the plant.

Assembled transcript sequences of *P. kurrooa* were analyzed for these SSRs (Additional file 7). A total of 1,562 SSRs were identified in the assembled transcripts. The trinucleotide SSRs have been observed to be the most prevalent group of markers (45.63%) with highest occurrence of GAA, TGG, CCA, AGA, and TCA repeats followed by mononucleotide (35.25%) and dinucleotide (21.29%) SSRs. Most prevalent mononucleotide was poly-A while highest prevalent dinucleotide SSRs were poly-AG and poly-TC. The observed prevalence of poly-A could be due to the presence of poly-A tails of RNA sequences. Only a small fraction of tetra and penta SSRs were identified (Additional file 7). In general, trinucleotide SSRs are the most common ones as compared to dinucleotides or tetranucleotides [40,41].

Functional annotation and classification of *P. kurrooa* transcriptome

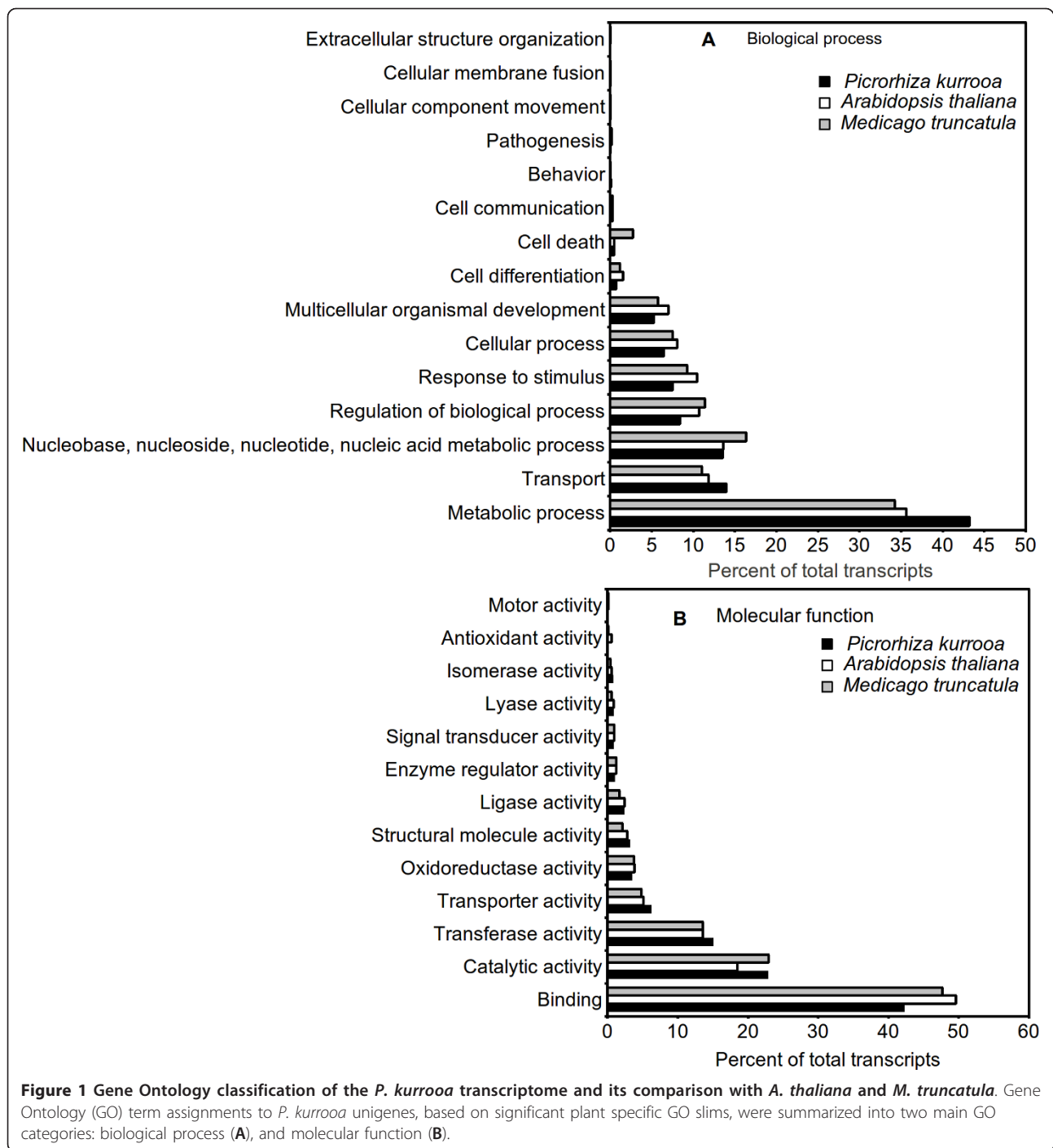
For functional annotation of *P. kurrooa* transcriptome, transcripts were compared against the NR protein sequences available at UniProt database using BLASTX algorithm with E-value threshold of 10^{-01} . The associated hits were searched for their respective Gene Ontology (GO), Kyoto Encyclopedia of Genes and Genomes (KEGG) and Enzyme Commission Codes (EC) for each query sequence and the highest bit score hit was selected. GO terms are derived from dynamic controlled vocabularies or ontologies that can be used to describe the function of genes and gene products. Annotation against GO

database yielded significant annotation for 31,959 out of 72,220 assembled sequences, representing the best possible hits. These genes were further classified into two major categories namely, biological process and molecular function using plant specific GO slims that provide a broad overview of the ontology content. Functional classification of *P. kurrooa* transcripts in biological process category (Figure 1A) showed that metabolic process, transport, regulation of biological processes, response to stimulus and cellular process were among the highly represented groups indicating that the plant is undergoing rapid growth and extensive metabolic activity. Genes involved in DNA binding, catalytic and transferase activity were highly represented in molecular function category (Figure 1B) indicating dominance of gene regulation, signal transduction and enzymatically active processes. Genes involved in other important biological processes such as cell differentiation, communication, transport were also identified through GO annotations. A comparison for distribution of transcripts across various GO slim categories, between *A. thaliana*, *P. kurrooa* and *M. truncatula* showed no major differences between the ranks of GO slim categories (Figure 1A, B). However, comparison for distribution of top occurring GO terms instead of GO slim categories between *P. kurrooa* and *A. thaliana* suggested differential distribution of transcripts between various GO categories (Additional file 8).

Best EC classification was obtained for 14,630 assembled sequences, whereas associated KEGG classification was obtained for 15,560 assembled sequences. Figure 2A lists the top 50 abundant enzyme classes observed for *P. kurrooa* transcriptome. Interestingly, a large amount of assembled transcripts belonged to serine/threonine protein kinase enzyme class alone (14.6%). Besides this, Figure 2B displays top 50 KEGG pathways represented by the assembled transcriptome sequences. Highest number of sequences belonged to plant-pathogen interaction pathways (6.13%) followed by ribosome, spliceosome, protein processing and endoplasmic reticulum, starch and sucrose metabolism, ubiquitin mediated proteolysis, aminoacyl-tRNA biosynthesis, RNA degradation and so on. Highest represented groups included many pathways associated with housekeeping processes as well as plant development and secondary metabolism.

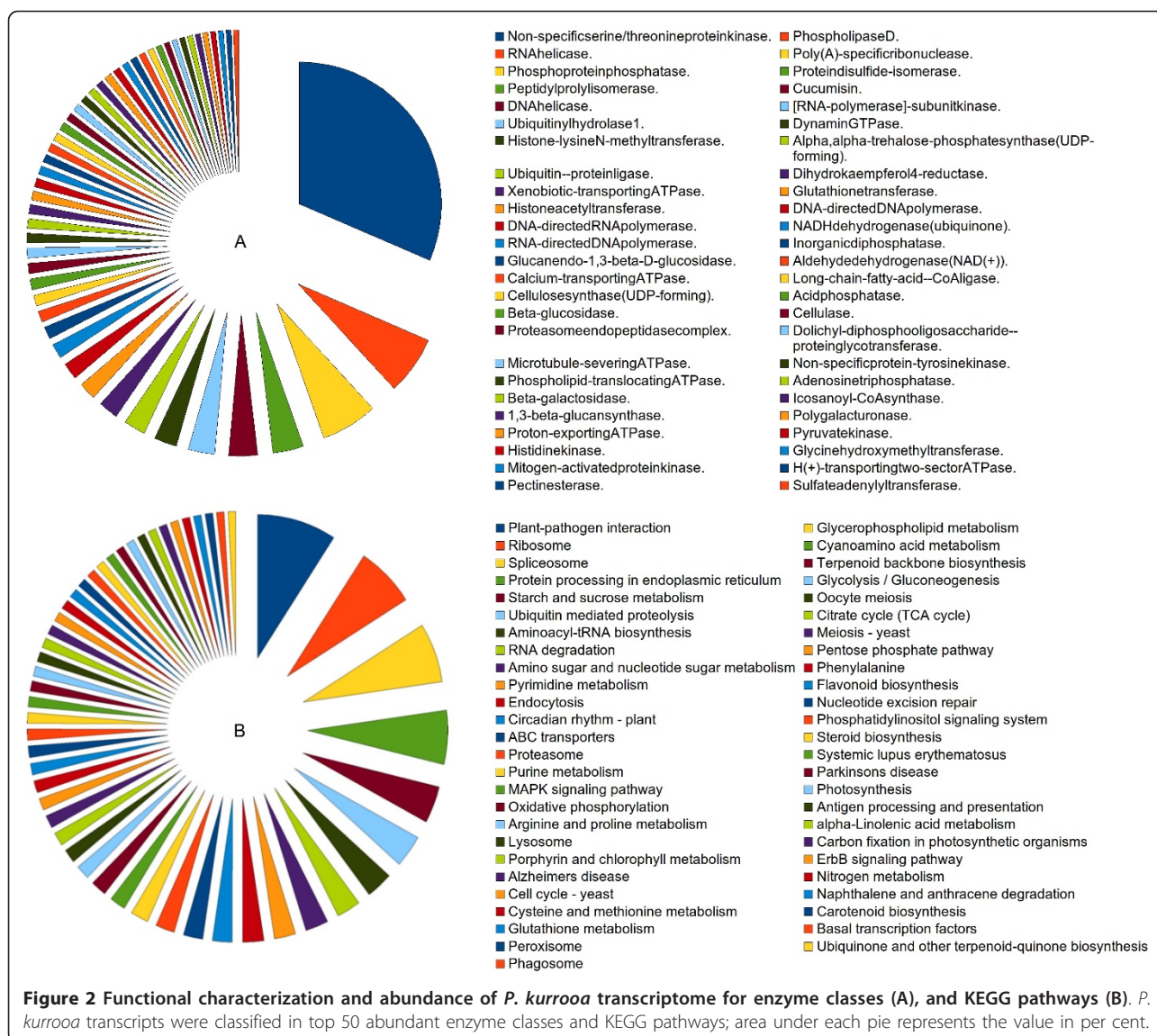
Transcriptome analysis suggests modulation of major plant processes at two temperatures

One of the goals of transcriptome sequencing was to compare transcripts at 15°C and 25°C, the temperatures which modulate picosides content [5]. Our data was in line with the previous work that showed higher picosides content at 15°C as compared to those at 25°C (Figure 3). Genome wide analysis of gene expression at two temperatures was assessed using RPKM, where read-counts of a particular



transcript represent expression level [44]. This approach was effective in detecting even scarcely expressed transcripts and was reported to be independent of prior knowledge of gene model, making it a natural choice to measure expression in the absence of known gene models and microarray chips. Considering dissimilar sequence clustering to contain over-representation, GO annotation for 19,769 unique genes was obtained along with their

RPKM values at the two temperatures. Based on fold increment at 15°C, these genes were grouped into six different expression classes ranging from > 10 fold increment to 0.5 fold or lower. Highest number of genes fell into the group with minimum change in expression. A detailed breakup for each of such categories along with top 20 GO categories for molecular function as well as biological process is listed in Additional file 9. Molecular function



groups representing monooxygenase activity, 2-iron, 2-sulfur cluster binding, cobalamin binding, beta lactamase activity, aminobutyraldehyde dehydrogenase activity, purine transmembrane transporter activity and metal ions like iron and copper binding activities were found to be over-expressed at 15°C. Under the biological process groups, those associated with various biosynthesis and transport processes such as zinc and ammonium transport and protein chromophore linkage were prominent at 15°C. Figure 4 and 5 represent the top 10 biological process and molecular function categories, respectively, present at two fold or higher expression groups at 15°C and 25°C. As can be seen from these diagrams, response to heat, response to biotic stimulus and lipid catabolic process were exclusively represented at 25°C. While at 15°C, categories for redox, glycogen biosynthetic process, biosynthetic processes and

protein-chromophore linkage were exclusively represented. Under the molecular function categories, monooxygenase activities, peptidase activities, catalytic activities, 2-sulfur, 2-iron cluster binding and protein binding activities were found to be more pronounced at 15°C, while pectinesterase and protein kinase activities were predominant at 25°C. A further enrichment analysis for functional categories pointed out that transcripts associated with response to stress, response to stimulus, phytosteroid metabolic process and brassinosteroid (BR) metabolic process were significantly enriched in the group having two fold or higher expression at 25°C (Figure 6). BRs are a group of plant steroidal hormones that regulate various aspects of plant growth and development, including cell elongation, photomorphogenesis, xylem differentiation, seed germination [45], and adaptation to abiotic and biotic

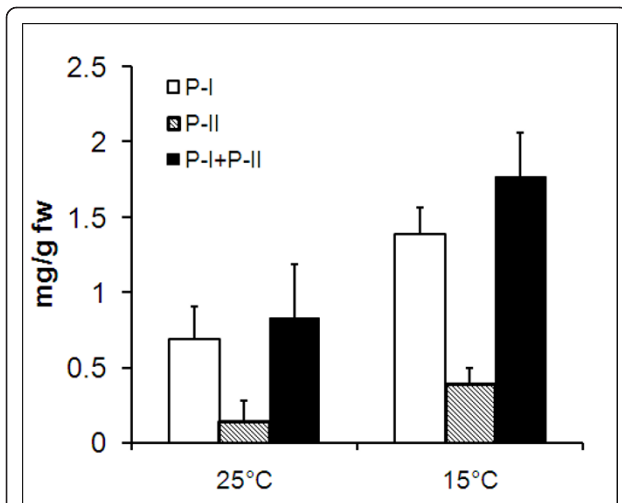


Figure 3 Effect of temperature on picosides content. Leaf tissue collected from *P. kurrooa* plants kept at 15°C and 25°C were ground in liquid nitrogen and the picosides were extracted for analysis on Ultra Performance Liquid Chromatography system using BEH workflow shield C18 (1.7 μm particles, 2.1 × 100 mm) analytical column. Data are average of four separate biological replicates with error bars as standard deviation.

environmental stresses [46]. BRs promote tolerance in plants against a wide range of stresses, including heat, cold, drought and salinity, possibly through up-regulating the expression of stress related genes [47]. Compared to the expression at 15°C, up-regulation of stress responsive transcripts is suggestive of *P. kurrooa* to be under stress at 25°C. The above described global analysis of gene expression provided comprehensive dataset with each gene

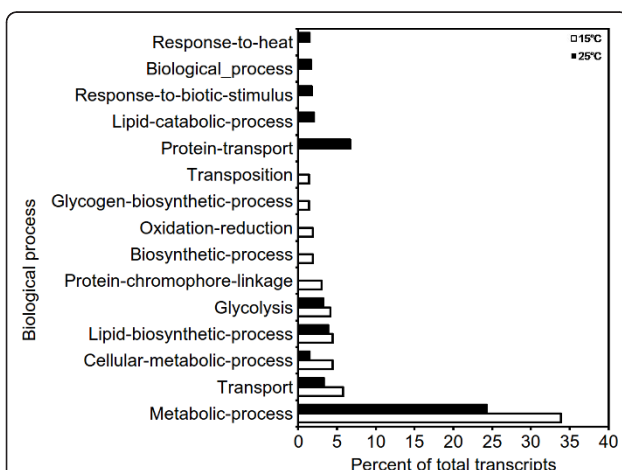


Figure 4 Distribution of *P. kurrooa* unigenes across various biological process categories exhibiting 2 fold or higher expression at 15°C and 25°C [based on a set of plant specific Gene Ontology (GO) terms]. For some transcripts, the daughter GO terms could not be assigned, making them to retain higher hierarchy GO terms or GO slim terms.

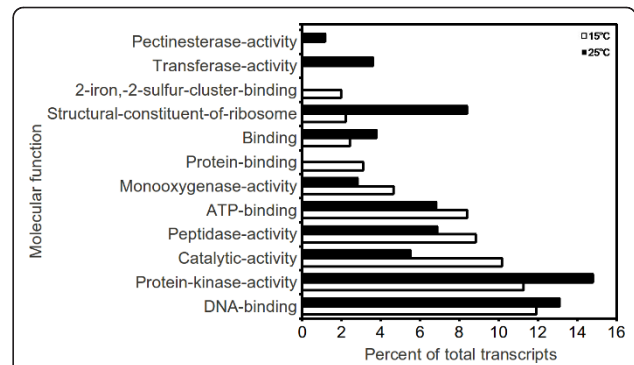
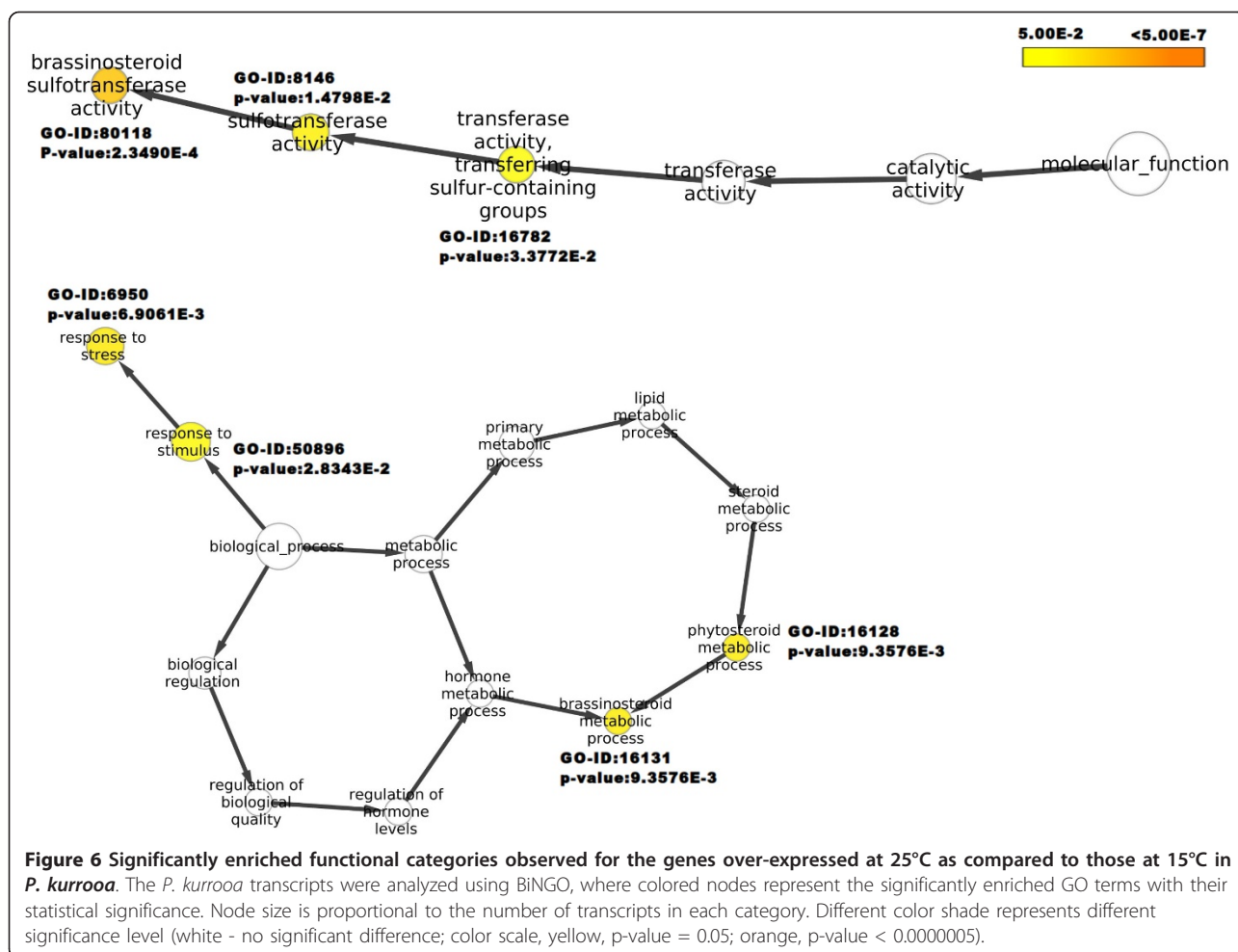


Figure 5 Distribution of *P. kurrooa* unigenes across various molecular function categories exhibiting 2 fold or higher expression at 15°C and 25°C [based on a set of plant specific Gene Ontology (GO) terms]. For some transcripts, the daughter GO terms could not be assigned, making them to retain higher hierarchy GO terms or GO slim terms.

represented by its absolute expression level at the two temperatures. Several processes such as metabolic processes, cellular processes, transport processes (Figure 4), and catalytic processes (Figure 5) were equally represented at both the temperatures indicating the importance of these processes in plant growth and survival; although different set of genes in these processes might determine the response of plant to temperature change. Transcripts associated with the processes involving lipid metabolism were highly enriched at 25°C (Figure 4), suggesting a change in lipid profile. Indeed, temperature has been shown to modulate lipid profile in plant [48].

Concomitant modulation of several plant processes suggests involvement of transcription factors (TFs) for coordinated regulation of gene expression. TFs are sequence specific DNA-binding proteins that interact with the promoter regions of target genes and modulate gene expression. These proteins regulate gene transcription depending upon tissue type and in response to internal signals, for example plant hormones, and to external signals such as temperature, UV light, pathogen attack, and drought. In *P. kurrooa*, 6,305 transcript sequences exhibited homology with TF families, which were reduced to 2,500 after dissimilar sequence clustering (Additional file 10). The most abundant TF families observed were for *C3H*, *PHD*, *MADS*, *bHLH* and *MYB*-related family (Additional file 11). Of the 2,500 transcription factors, 5.36% exhibited 2-fold or higher abundance enrichment at 15°C (Additional file 12). The most abundant TFs in this group were *MYB*-related, *FAR1*, *FHA*, *HB*, *bHLH*, *Orphans*, *C3H*, *C2H2*, *MADS*, *G2-like*, *NAC*, *SNF2* and *WRKY*. Of the total TFs, 16.9% exhibited abundance increment two fold or above at 25°C and belonged to *C3H*, *MADS*, *bHLH*, *PHD* and *FAR1* family.



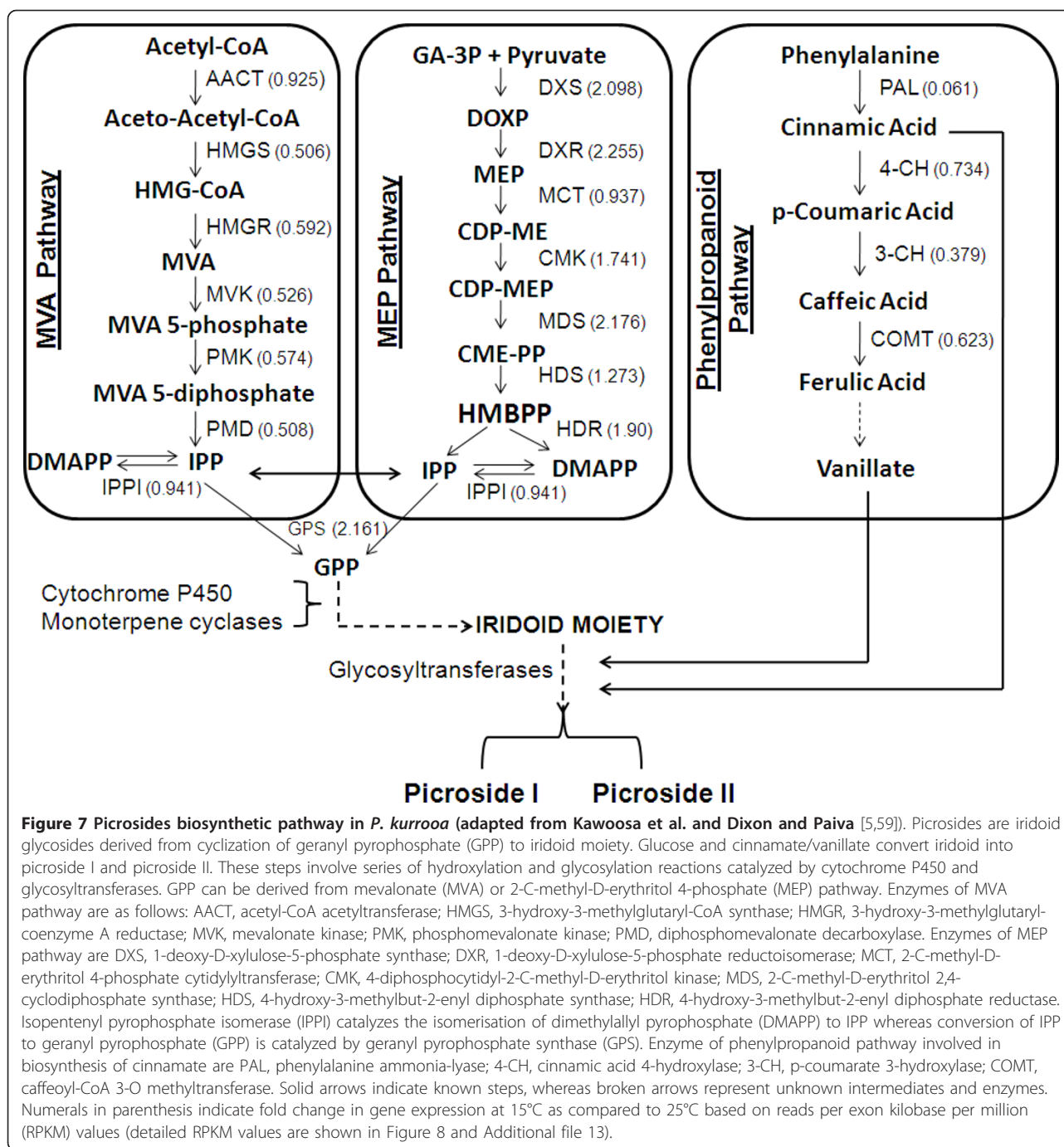
The above mentioned TFs have been associated with varied processes. For example, members of C3H family are involved in embryogenesis [49], whereas PHD proteins are found in nucleus and regulate chromatin-mediated transcription [50]. Most members of MADS family TFs are involved in the regulation of flower-related physiological and developmental processes [51], whereas members of bHLH are involved in controlling cell proliferation and in the development of specific cell lineages [52]. FAR1, yet another family of TFs, is involved in phytochrome signaling [53].

It was interesting to note that global gene expression analysis exhibited modulation of processes which were responsive to heat, responsive to biotic stimulus, lipid catabolic process and glycogen biosynthetic process (Figure 4) at 25°C as compared to 15°C. Members of TFs families such as bHLH, WRKY, MYB, AP2/EREBP [54-57] that are known to regulate the above processes, also exhibited modulation (Additional file 12) in accordance with the said transcripts, suggesting their role in regulating the mentioned processes. *P. kurrooa* is a plant of high altitude

temperate region which does not tolerate a continuous temperature greater than 20°C for a longer period of time [58]. A systematic analysis of these transcription factors would open door for imparting tolerance to *P. kurrooa* at high temperature (25°C). It would also be worthwhile to study, how such a temperature mediated transcriptomic adjustment affects picrosides biosynthesis.

Pathways associated with picrosides biosynthesis exhibit temperature dependent modulation

Since the two temperatures targeted in the present work modulated picrosides content, it was of interest to analyze various genes associated with picrosides biosynthesis. Picrosides are terpenoids with an iridoid skeleton of monoterpene origin. Depending upon the functional-group moieties, picrosides are classified as picroside I and picroside II. Picroside I has cinnamate moiety, whereas picroside II has vanillate moiety. The cinnamate and vanillate moieties are derived from PP pathway (Figure 7). Synthesis of cinnamate requires the action of phenylalanine ammonia-lyase (PAL) on phenylalanine whereas



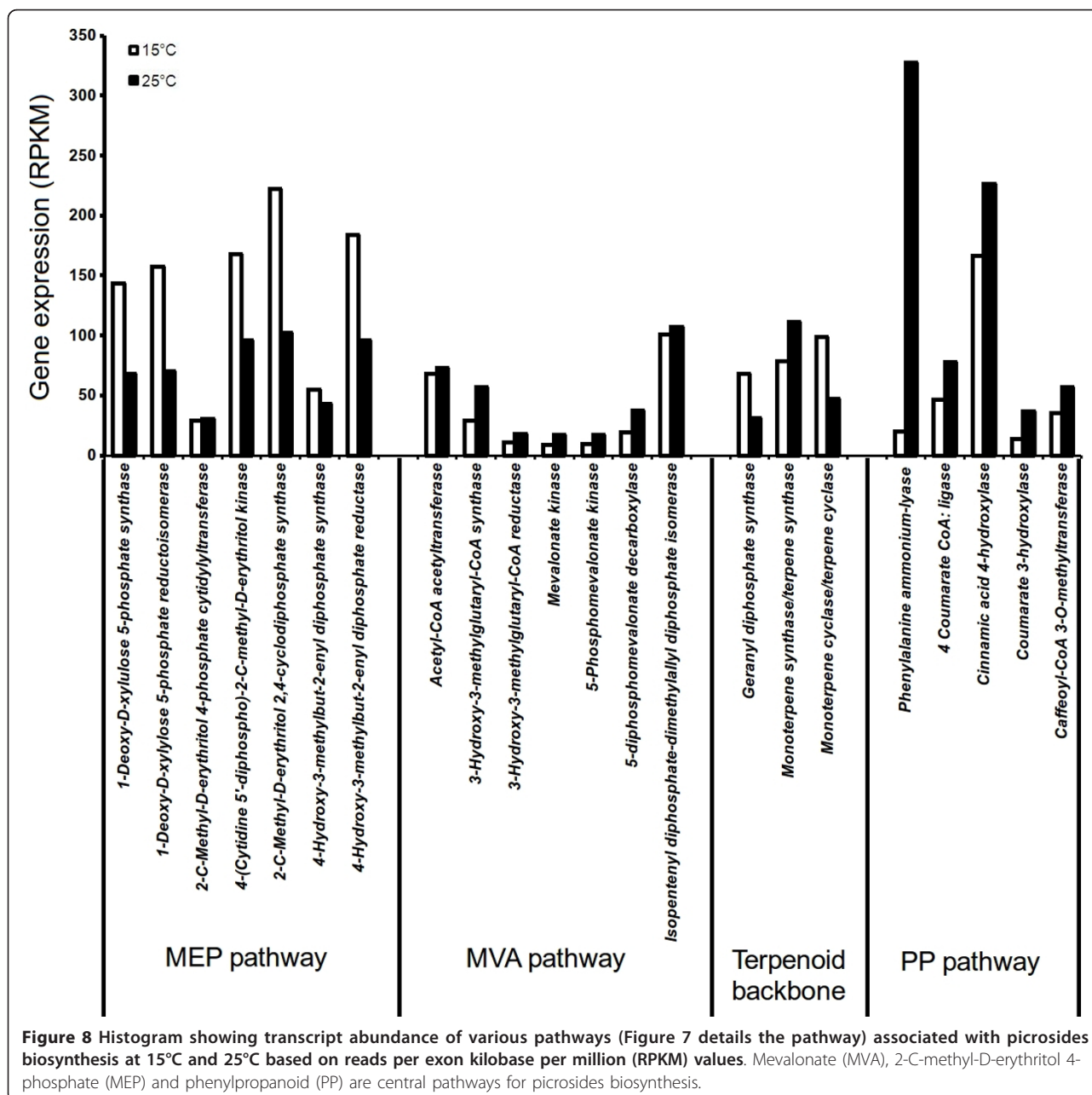
caffeoyl-CoA 3-O methyltransferase (COMT) is the key enzyme for vanillate biosynthesis [59].

Iridoid moiety is derived from geranyl pyrophosphate (GPP) (Figure 7). GPP is synthesized by sequential head to tail addition of isopentenyl pyrophosphate and its allelic isomer dimethylallyl pyrophosphate [60]. Cytosolic MVA pathway and the plastid localized MEP pathway synthesize IPP and DMAPP [60-64], with cross talks between these two pathways [65,66]. Thus

MVA, MEP and PP are regarded as central pathways for the synthesis of picrosides. MVA pathway starts from the condensation of acetyl-CoA [67,68], whereas MEP pathway needs pyruvate and glyceraldehyde 3-phosphate [69,70]. Biosynthesis of picrosides involves synthesis of iridoid moiety from GPP through series of oxidation and cyclization steps followed by the condensation of glucose moiety and cinnamate/vanillate with iridoid unit (Figure 7).

Analysis of MVA, MEP and PP pathways have general implications as well. These are involved in the biosynthesis of large number of secondary metabolites including those having commercial implications. These compounds include taxol [71,72], artemisinin [73], β -carotene [74], α -tocopherol [75], vincristine, vinblastine and coumarins [76]. These pathways play important roles in growth and development including secondary metabolism, and hence identification of major regulatory steps would be key to modulate plant performance and secondary metabolism, if need be.

Using BLAST analysis against the UniProt and KEGG databases, various genes associated with MVA, MEP and PP pathways were identified. RPKM-based expression showed 2 fold increase for several genes of MEP pathways at 15°C as compared to those at 25°C (Figure 8). Data was in agreement with the data on picosides content that showed its increased accumulation at 15°C (Figure 3). While a previous work on *P. kurrooa* also showed a positive correlation between *Pkdxs* (a gene of MEP pathway) and picosides accumulation [5], the present work detailed on all the genes of MEP pathway



highlighting their importance in picosides accumulation (Figure 8).

RPKM data showed up-regulation of various genes of MVA and PP pathway at 25°C as compared to those at 15°C (Figure 8, Additional file 13). The accumulation of picosides decreased at 25°C as compared to 15°C, whereas various genes of PP pathway exhibited up-regulation at 25°C. Since PP pathway is important in supplying cinnamate and vallinate for picosides biosynthesis, an up-regulation of various genes of the pathways were envisioned at 15°C as compared to 25°C. However the results were opposite, suggesting rerouting of the metabolites towards the synthesis of other metabolites at 25°C. And at 15°C, the observed expression of genes of the MVA and PP pathway might be sufficient enough to meet the requirement of cinnamate and vanillate. In fact, increased activity of *PAL* (a gene of PP pathway) in response to thermal stress was considered as an acclamatory response of cells to heat stress in *Citrus vulgaris* [77]. Expression of various genes of PP pathway including *PAL* is regulated by TF family LIM. LIM proteins have conserved cysteine-histidine rich, zinc-coordinating domain consisting of two zinc fingers repeated in tandem. In transgenic tobacco, down-regulating the expression of LIM proteins through antisense approach lowered the expression of various genes of PP pathway [78]. In *P. kurrooa*, RPKM based expression analysis showed that the expression of *LIM* was up-regulated at 25°C (Additional file 12) suggesting its role in regulating PP pathway. Thus at higher temperature, up-regulation of MVA and PP pathways could have a role in temperature stress acclimation also.

Transcriptome data identifies cytochrome P450 (CYPs) and glycosyltransferases (GTs) as a source of hitherto unknown genes involved in the biosynthesis of picosides

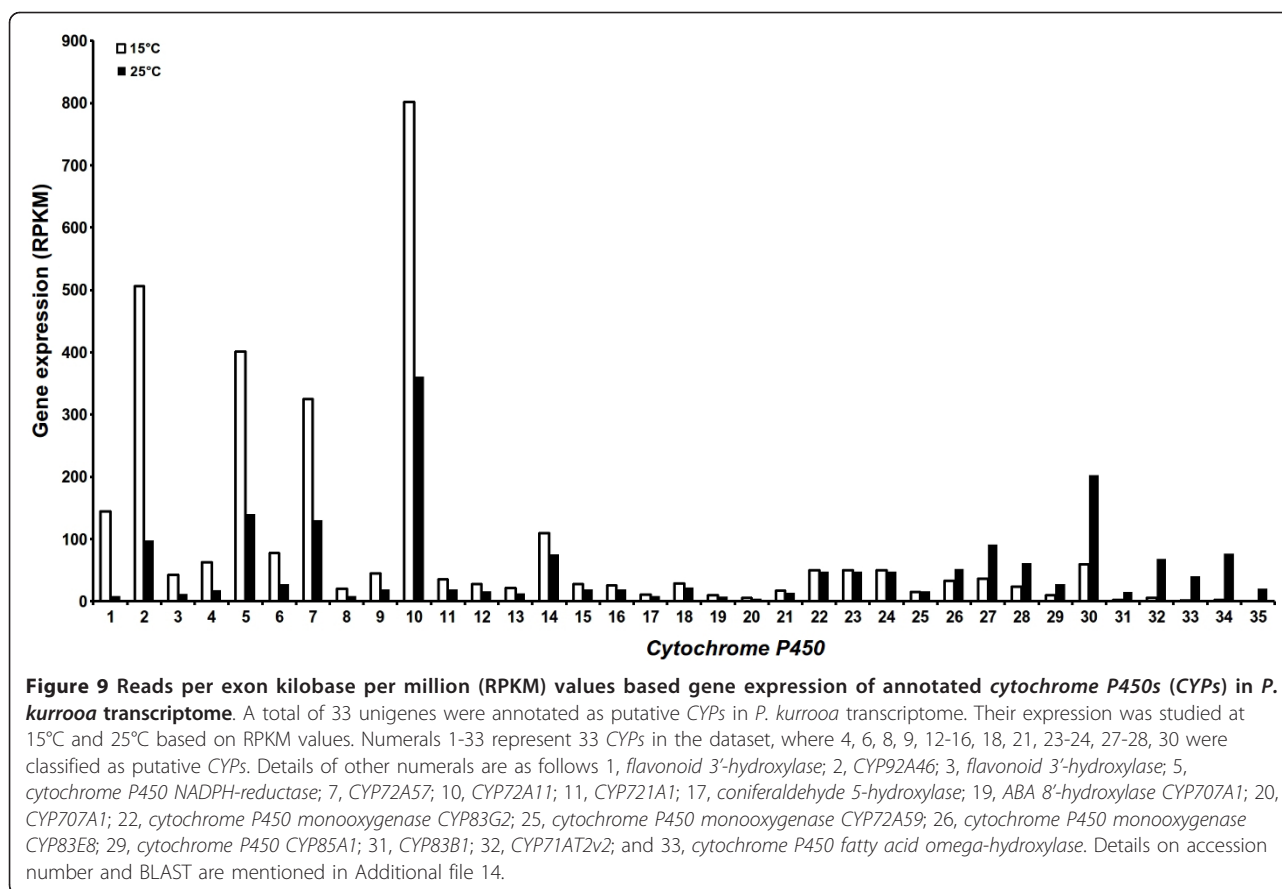
In *P. kurrooa*, the intermediates and enzymes involved in cyclization of GPP for the synthesis of iridoid moiety and later its condensation with glucose and cinnamate/vanillate moieties are yet to be deciphered. *In vivo* tracer studies in *Catharanthus roseus* and *Lonicera morrowii* showed that iridoid is synthesized by cyclization of 10-oxogeraniol to yield iridoal [79]. This is subsequently converted into iridoid compounds via iridotrial intermediate, and involves multiple oxidation/hydroxylation and glycosylation reactions. Most of the oxidative reactions, including hydroxylations, epoxidation, dealkylation, dehydration and carbon-carbon bond cleavage are catalyzed by CYP group of enzymes [80], whereas glycosylation reactions are catalyzed by GTs. Therefore, it would be relevant to discuss CYPs and GTs in the transcriptome of *P. kurrooa*.

CYPs are membrane bound hemoproteins involved in array of pathways in primary and secondary metabolism. Some of the example of CYPs include lauric acid

hydroxylase, limonene-3-hydroxylases (CYP71D13 and CYP71D15), (+)-menthofuran synthase, geraniol hydroxylase, camphor-6-exo-hydroxylase, cinnamate 4-hydroxylase (4-CH), flavonoid 3'-hydroxylase, flavones synthase 2-berbamunine synthase, tyrosine N-hydroxylase. Based on phylogenetic studies, plant CYPs can be divided into 10 separate clans that cover the current 61 families [81].

Monoterpenes, sesquiterpenes and diterpenes are intimately associated with CYPs. For example, 10-hydroxylation of geraniol and nerol has long been known to be a CYP function [82]. Allylic hydroxylation of cyclic monoterpenes by CYPs is well documented. Such reactions are known to occur in the hydroxylation of limonene [83], pinene [84], sabinene [85], camphor [86], abietin [87] and terpeniol [88]. All the CYPs associated with monoterpenes are divided into CYP71 clan. In the present study, 33 uni-genes annotated as putative CYPs were identified based on highest bitscore and E-value (Figure 9 and Additional file 14). Sixteen of these CYPs were identified as putative CYPs. Seventeen CYPs exhibited homology with *flavonoid 3'-hydroxylase*, *CYP92A46*, *cytochrome P450 NADPH-reductase*, *CYP72A57*, *CYP72A11*, *CYP721A1*, *coniferaldehyde 5-hydroxylase*, *ABA 8'-hydroxylase* *CYP707A1*, *CYP707A1*, *cytochrome P450 monooxygenase* *CYP83G2*, *cytochrome P450 monooxygenase* *CYP72A59*, *cytochrome P450 monooxygenase* *CYP83E8*, *cytochrome P450* *CYP85A1*, *CYP83B1*, *CYP71AT2v2*, and *cytochrome P450 fatty acid omega-hydroxylase*. Ten CYPs showed more than two fold increase in the expression and 8 CYPs exhibited down-regulation, respectively at 15°C as compared to at 25°C. Increased picosides content (Figure 3) and up-regulation of CYPs at 15°C suggested these to be the possible candidates associated with picosides biosynthesis through their possible role in cyclization of GPP and iridoid moiety as indicated in Figure 7.

GTs constitute a large family of enzymes that catalyze transfer of glycosyl group from activated sugars [activation is achieved after addition of nucleoside diphosphate e.g., uridine diphosphate (UDP) sugars] to aglycone acceptor molecules, and regulate their bioactivity, solubility and transport [89]. GTs are grouped into 69 families based on the substrate recognition and sequence relatedness, of which family 1 is the largest and is over-represented by uridine diphosphate glycosyltransferases (UGTs). UGTs use UDP-glucose as the donor in the GT catalyzed reactions [90]. Therefore, the reactions involving transfer of glucose utilize UGTs. UGTs have 44-amino acid C-terminal signature motif designated as PSPG box and are encoded by large multigene families, sometime comprising several hundred of genes. For example, family 1 UGTs are encoded by 120 *UGT* genes in *A. thaliana* and by 165 *UGTs* in *M. truncatula* [89]. The *UGT* superfamily in higher plants is thought to encode enzymes that glycosylate a broad



array of aglycones, including plant hormones, all major classes of plant secondary metabolites, and xenobiotics such as herbicides [91]. Picosides are present as 1-O-glucosides and hence an analysis of *UGTs* would be central to identify the gene associated with the glycosylation of iridoid moiety.

BLAST search identified 154 unigenes encoding GTs, out of which 17 encoded for *UGTs* in *P. kurrooa* (Figure 10, Additional file 15). Expression of these 17 *UGTs* through RPKM analysis showed that 2 *UGTs* are up-regulated and 4 were down-regulated at 15°C as compared to those at 25°C. Eleven *UGTs* showed no significant change in expression at the two temperatures. Up-regulation of picosides at 15°C vis-à-vis up-regulation of 2 *UGTs* suggests these to be the possible candidates associated with picosides biosynthesis.

Experimental validation of RPKM data by reverse transcriptase-polymerase chain reaction (RT-PCR)

The expression profiles obtained through RPKM values were experimentally validated through RT-PCR using 19 genes belonging to MEP, MVA and PP pathways. RT-PCR data showed that all the 7 genes of MEP pathway showed up-regulation at 15°C and the similar trend was obtained by RPKM data as well (Figure 8, Figure 11).

RT-PCR showed up-regulation of *HMGR*, mevalonate kinase (*MVK*) and phosphomevalonate kinase (*PMK*) of MVA pathway and *COMT* of PP pathway at 15°C. However, RPKM data exhibited up-regulation of these genes at 25°C. Expression of *acetyl-CoA acetyltransferase* (of MVA pathway) did not exhibit any significant variation at the two temperatures as evidenced by RT-PCR and RPKM data. Expression of *GPS* (Figure 8) was prominent at 15°C as compared to 25°C with 3 fold increase as per the RT-PCR data (Figure 11); RPKM based expression analysis also confirmed the same trend (Figure 8).

It was encouraging to note that except for *PAL*, *4-CH*, *COMT*, *3-hydroxy-3-methylglutaryl-CoA synthase*, *HMGR*, *MVK*, *PMK*, *diphosphomevalonate decarboxylase*, the expression of rest of the 11 genes as analyzed by RPKM and RT-PCR was in accordance with each other. The different trend of expression by RPKM and RT-PCR method has been reported by other groups as well [93]. The possibility of opposite results by the two methods could be due to the reasons that genome analyzer provides a holistic picture of all the isoforms of a gene into consideration, whereas the expression by RT-PCR is specific to the isoform of the gene into consideration owing to the use of gene specific primers.

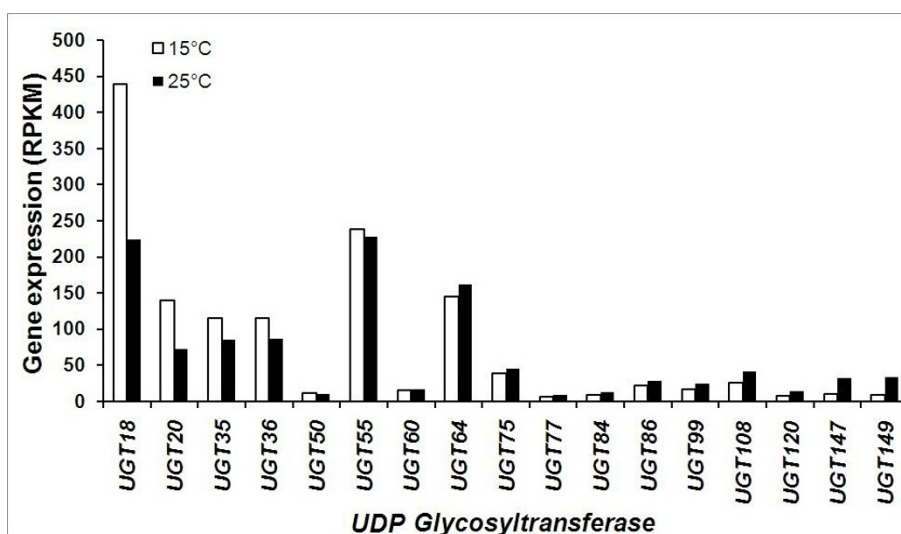


Figure 10 Reads per exon kilobase per million (RPKM) values-based expression analysis of uridine diphosphate glycosyltransferases (UGTs) in *P. kurrooa* transcriptome. Expression of 17 UGTs was studied at 15°C and 25°C. Details of the corresponding contigs, accession number and BLAST are listed in Additional file 15.

Conclusions

In this study, transcriptome for leaf tissue of *P. kurrooa* was generated and analyzed for the plants kept at 15°C and 25°C with a total of 74,336 assembled sequences. PE read data along with optimized parameters and suitable multiple assembling and clustering approaches were used to find out non-inflated number of assembled transcript sequences with high coverage and average length. The similarity and overlap based similarity search and assembling might result into inflated number of assembled sequences, many of which could be either from different parts of the same gene or the isoforms. The dissimilar sequence clustering approach used in the present work helped to overcome the above problems to a large extent and reduced over-representation of assembled sequences. GO, KEGG and EC based tools and scripts were used for sequence annotation. Transcriptome data exhibited GC content representative of a dicot genome and also abundance of trinucleotide SSR markers was evident. RPKM based expression analysis by comparing transcriptomes at two temperatures showed major adjustments reflecting changes in major biological processes and metabolic pathways including the pathways associated with picrosides biosynthesis. A number of novel candidate genes involved in picrosides biosynthesis, including *CYPs* and *UGTs* were also identified, which could serve as a source of hitherto uncharacterized genes associated with picrosides biosynthesis. Transcriptome data generated in the present work has immense implications in understanding plant response at two temperatures, marker assisted selection, and

metabolic engineering in an economically important, medicinal and endangered plant species *P. kurrooa*.

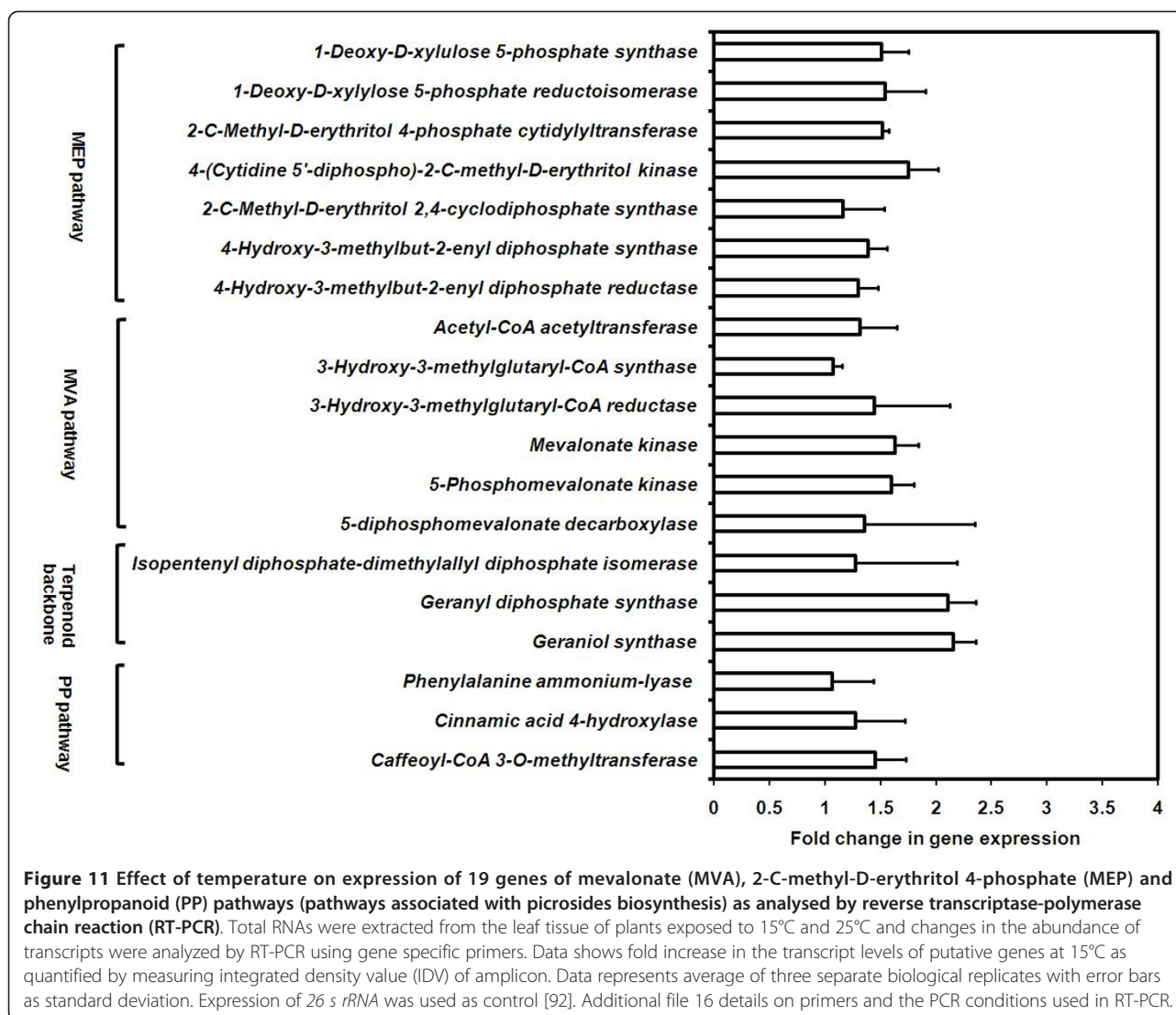
Methods

Plant Material

Plants of *P. kurrooa* were collected from its natural habitat at Rohtang pass (4,000 m altitude, 32°23' N, 77° 15' E, India) and maintained at the Institute at Palampur (1,300 m altitude; 32°06' N, 76°33' E, India) as described previously [5]. After three months at Palampur, these were shifted to plant growth chambers (Percival Scientific, USA) maintained at 15°C and 25°C with a 16-h photoperiod. Plants were adequately watered and the sampling was done on day 6 at the two temperatures. Third leaf (position with respect to the top apical leaf designated as first leaf) was harvested for various experiments, frozen in liquid nitrogen and stored at -80°C for further use.

Extraction and estimation of picrosides

Picrosides were estimated as described previously [94] except that Ultra Performance Liquid Chromatography (UPLC) system consisting of Acquity UPLC (Waters, Millford, USA) equipped with binary solvent manager, sample manager, photodiode array detector (PDA) and a BEH workflow Shield C₁₈ (1.7 μm particles, 2.1 × 100 mm) analytical column (Waters Corp., Manchester UK) was used. After extraction, samples were filtered through 0.22 micron filter (Millipore, USA) and injected into the chromatographic system. The mobile phase consisted of formic acid (0.05%) in water and methanol:



acetonitrile (1:1) in 70:30 ratio. Isocratic elution was carried out at a flow rate of 0.250 ml min⁻¹ with injection volume of 5 µl. Picosides were monitored at 270 nm and quantified using picoside I and picoside II as standards (ChromaDex™, USA). Four separate biological replicates were used for each estimation.

Preparation of cDNA and transcriptome sequencing

Total RNA was extracted as described by Ghawana et al. [95]. Quality and quantity of RNA was determined using a Nanodrop 1000 (NanoDrop Technologies, USA) and a Bioanalyzer Chip RNA7500 series II (Agilent Technologies, USA). Total RNA was used to purify poly (A) mRNA using Oligotex mRNA midi prep kit (QIAGEN, Germany) followed by repurification using mRNA-Seq 8 sample prep kit (Illumina, USA). This was used to prepare a non-directional Illumina RNA Seq library. Quality control and quantification of library was performed

with a Bioanalyzer chip DNA 1200 series II (Agilent Technologies, USA). Each library had an average insert size of 200 bp. PE 36 bp sequences were generated on Illumina genome analyzer Iix following manufacturer's instructions.

De novo assembly and sequence clustering

The assembled transcript sequences, the filtered read data, transcript grouping for similar genes, are available at http://scbb.ihbt.res.in/Picro_information. Entire computational analysis was carried out on CentOS based 48 cores 2.2 Ghz AMD processors based HPC server with 256 GB random access memory (RAM) as well as Ubuntu Linux based workstations with 8 cores 2.5 Ghz Intel processors with 24 GB RAM. Using CASAVA package GERALD tool, provided by Illumina, PE sequence reads were generated in fastq format. For each lane, PE reads of length 36 were generated, with total 72

bp. Last three base pairs from each read were removed in order to minimize the sequencing error, which is usually higher in the 3' end of reads. An in-house developed tool, *filterR*, was used to filter out poor quality reads. *FilterR* was developed using C++ to detect adapter sequence contamination as well as poor read quality. In its back-end it applies the quality scoring scheme provided by Illumina. It also provides an option, *Recommender*, which allows the user to decide the suitable cut-off to perform read screening by calculating average read quality positionally. This allows selective trimming of the reads instead of discarding the entire read. To attain fast processing and take advantage of multicore processors, concurrency has been introduced in it using *openMP*. Besides this, it also provides a user friendly GUI implemented using Qt C++ library. *FilterR* has been made freely available for the community at http://scbb.ihbt.res.in/SCBB_dept/filter.php. K-mer frequency measurement was performed to filter out reads with lower k-mer frequency for default value, which could be a result of sequencing error. *De novo* assembling of high quality reads was performed using *SOAPdenovo* program which applies de Bruijn graph algorithm and a series of stepwise strategies [15]. The cleaned reads were first split into smaller pieces, the 'k-mers', for assembly in order to produce contigs, using the de Bruijn graph. K-mer size of 23 achieved the best balance between the number of contigs produced, coverage and average sequence length attained. PE option of assembling with distance of 200 bp was applied to assist more effective assembling with information of paired reads. The same information was also used to build the scaffold sequences by merging two contigs into single scaffold sequence, sharing the read pairs. Figure 12 shows the protocol used in *de novo* assembling and transcript analysis of assembled sequences for a given sample. Sequence redundancy was removed by searching similar sequences with minimum similarity cut-off of 95% using *CD-HIT-EST* [96]. *CD-HIT* was used for further clustering with 90% similarity cut-off. The algorithms for various clustering programs differed in their approach of clustering and combined use of such clustering tools with different algorithms fetched better results [97]. For the same reason clustering process was supplemented with *TGICL-CAP3* clustering [98] based on terminal region matching for at least 40 bp and 90% identity. The resulting singletons and consensus contigs were merged to get the final list of assembled transcripts. A set of script was developed to detect contigs/scaffolds that had no sequence similarity but belonged to same gene's different regions. These were clustered together to represent as a single transcript. The best *BLASTX* hits for all contigs were looked for common NR database ID for a particular gene/peptide and all associated

contigs showing highest similarity to the same sequence but its different regions, were assigned to the same ID group.

Assembly validation and similarity search for assembled transcripts

In order to assess the reliability of assembly, 500 experimentally validated EST sequences available at dbEST NCBI of *P. kurrooa* were used (Additional file 5). A *BLASTN* analysis was performed for each reported EST against the set of assembled sequences at E-value threshold of 10^{-5} .

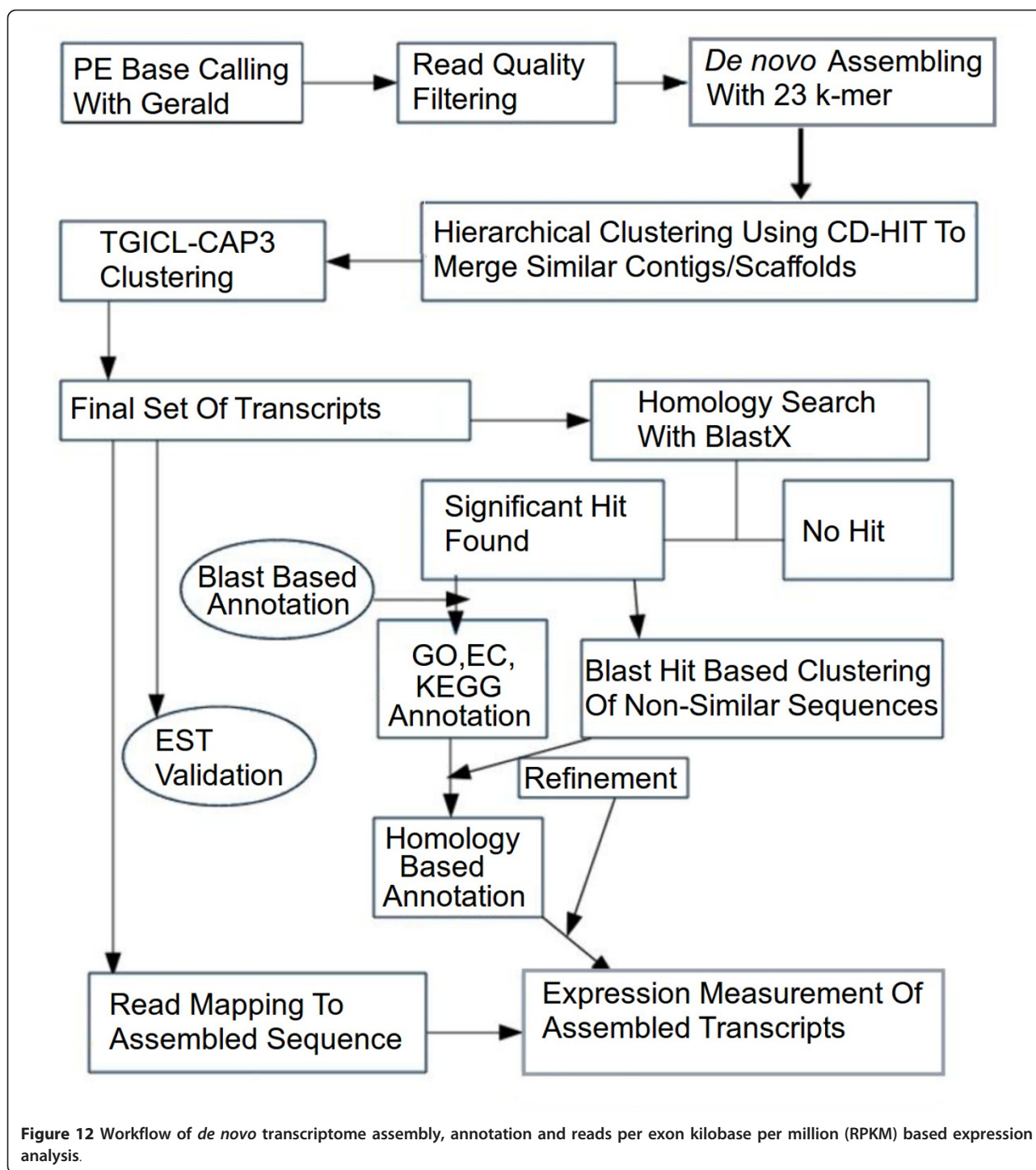
For similarity search, the assembled and filtered transcript sequences obtained after hierarchical clustering were scanned against NR protein database [99] through *BLASTX* with the E-value threshold of 10^{-5} .

Sequence annotation

Assembled transcripts of *P. kurrooa* were blasted against UniProt databases [100] and associated GO [101], KEGG [102] and EC with a cut-off E-value of 10^{-1} . It was observed that high stringent cut-off missed out either the right candidate and valid annotations and sometimes no hit was reported. GO terms were assigned for each uni-gene based on the GO terms annotated to its corresponding homologue in the UniProt database. For every query transcript sequence multiple hits were observed. Using in-house developed scripts, the best hit observed for each given sequence was selected based on highest bitscore and E-value. Majority of GO, EC and KEGG based annotation and statistics was done using Annotation tool, *Annot8r* [103]. Plant transcription factor database [104] hosts large number of plant specific TFs, their classification, corresponding nucleic acids and protein sequences. In the current study, data for all the 29,474 TFs reported in the database, version 3.0, were downloaded. The assembled transcript sequences were searched against this database using *BLASTX* with an E-value threshold of 10^{-5} . Only the top bit-scoring significant hit for each sequence was considered. GO term enrichment analysis was performed using *Bingo* tool [105] for hyper-geometric test, with Bonferroni Family-wise error rate correction [106]. This enrichment analysis was performed to evaluate the enrichment of various GO categories for the transcripts having expression level 2 fold or above at 15°C and 25°C.

Functional domains search for unknown sequences

The assembled sequences which did not return any homologous sequence hit through *BLASTX*, were converted into six longest ORFs, which were scanned against the functional domain databases like Conserved domain database, using *RPS-BLAST* [107] using UNIX version of *RPS-BLAST* [108,109].



Comparative similarity search for assembled sequences for different environmental conditions

In order to find the common transcripts between sets of assembled sequences for *P. kurrooa* at 15°C and 25°C, the assembled transcript sequences for both the conditions were search against each other using BLASTN

with E-value threshold of 10^{-5} . Transcripts returning best hits were identified as the common transcripts.

Read mapping and transcript abundance measurement

Applying the approach adopted by Mortazvi et al. [110] the expression level of each assembled transcript

sequence can be measured through RPKM values. RPKM level measurement is a sensitive approach to detect expression level, that measures expression of even poorly expressed transcripts using read count as the fundamental. For RPKM measurement, we first mapped back the filtered reads to various assembled transcripts, estimated total mapped reads, uniquely mapped reads assigned to each assembled transcript, with maximum two mismatches allowed. SeqMap [111] was used for read mapping and rSeq [112] was applied for RPKM based expression measurement. Expression data from both the sample were collected for each of the transcripts. Similar sequences across the samples were searched and their differential expression was measured by calculating the ratio of expression at 15°C and 25°C. Assembled sequences were used as the reference sequence to map back short reads and to measure RPKM for all assembled transcripts as suggested by Mortazavi et al. [110] and Jiang and Wong [111]. Based on the above mentioned dissimilar sequence clustering, having homologous sequences in database, for each such cluster, the longest sequence was considered as the representative sequence for the unique gene it represented. The associated GO terms and Ids were parsed for each of such sequence and their corresponding RPKM values for the two different temperature conditions were calculated along with fold increment.

GC content analysis and SSRs identification

GC content of the sequences was measured using Emboss GeeCee tool, while sequences were scanned for SSR markers using MISA [113].

Gene validation and expression analysis

Results of gene expression were validated by RT-PCR. RNA was pretreated with RNase-free DNase I (Invitrogen, USA) to remove any contaminating DNA followed by first strand cDNA synthesis with 1 µg of total RNA using superscript III (Invitrogen, USA) according to the manufacturer's instructions. PCR conditions including primer details for RT-PCR are mentioned in Additional file 16. Cycling conditions were optimized to obtain amplification within the exponential phase. Amplicons were quantified using Alpha DigiDoc gel documentation and image analysis system (Alpha Innotech, USA). Triplicates of each reaction were performed, and 26 s *rRNA* was chosen as an internal control for normalization [92].

Additional material

Additional file 1: Pooled transcriptome data of *P. kurrooa*. Due to large amount, data is divided into Additional file 1 and Additional file 2.

Additional file 2: Pooled transcriptome data of *P. kurrooa*. File contains the remaining data of Additional file 1.

Additional file 3: Dissimilar sequence groupings for assembled transcriptome sequences. The grouped sequences are dissimilar from each other, and belong to different regions of common genes. This helps reducing the over-representation of total transcripts, usually missed in assembling.

Additional file 4: Top highly represented functional conserved domains found in unknown sequences.

Additional file 5: Experimentally validated expressed sequence tags (ESTs) of *P. kurrooa* available at dbEST NCBI. Methods section has details including URL used in the present analysis.

Additional file 6: Guanine-cytosine (GC) content analysis of *P. kurrooa* transcripts. The average GC content of each transcript was calculated and highest proportion of transcripts belongs to the GC content range of 40-49%.

Additional file 7: Simple sequence repeats (SSRs) identified in transcripts of *P. kurrooa*.

Additional file 8: Comparative plots for top ten highest represented molecular function (A) and biological process (B) categories in *A. thaliana* and *P. kurrooa*.

Additional file 9: Reads per exon kilobase per million (RPKM) based gene expression at 15°C and 25°C in different expression categories ranging from > 10 fold increment to 0.5 fold or lower.

Additional file 10: Details on all the transcription factor (TF) families analyzed in *P. kurrooa*.

Additional file 11: Top 20 most abundant transcription factor (TF) families analyzed in *P. kurrooa*. Details of all the TFs are mentioned in Additional file 10.

Additional file 12: Reads per exon kilobase per million (RPKM) based expression of transcription factors analysed for *P. kurrooa* transcriptome at 15°C and 25°C.

Additional file 13: Reads per exon kilobase per million (RPKM) based expression of targeted genes of mevalonate (MVA), 2-C-methyl-D-erythritol 4-phosphate (MEP) and phenylpropanoid (PP) pathway (pathways associated with picrosides biosynthesis) at 15°C and 25°C.

Additional file 14: Reads per exon kilobase per million (RPKM) based expression of annotated cytochrome P450s (CYPs) in *P. kurrooa* transcriptome.

Additional file 15: Reads per exon kilobase per million (RPKM) based expression of annotated glycosyltransferases in *P. kurrooa* transcriptome.

Additional file 16: Oligonucleotide sequences and polymerase chain reaction (PCR) conditions used in reverse transcriptase (RT-PCR) based expression analysis.

Acknowledgements

We acknowledge the financial support provided by the Council of Scientific and Industrial Research (CSIR) through networking projects entitled "Exploratory study on climate change and adaptation of species complexes NWP020" and "Pathway engineering and system biology approach towards homologous and heterologous expression on high-value phytochemicals (artemisinin, taxanes, picrosides, morphine, withanolides) NWP008". RS thanks CSIR for MLP0037 internal funding for Bioinformatics infrastructural support raised. We are thankful to Hue Jiang, Stanford University, for providing us rSEQ, a tool to measure RPKM as well as helpfully discussing the process of RPKM calculation for interpreting transcript abundance. PG thanks ICMR, India, for awarding Junior Research Fellowship; HRS, NS, AK gratefully acknowledge CSIR for providing assistantship; VC is thankful to DST for INSPIRE-JRF fellowship. The manuscript represents IHBT publication number 3183.

Author details

¹Biotechnology Division, CSIR-Institute of Himalayan Bioresource Technology (Council of Scientific and Industrial Research), P.O. Box No. 6, Palampur 176 061, Himachal Pradesh, India. ²Studio of Computational Biology & Bioinformatics, CSIR-Institute of Himalayan Bioresource Technology (Council of Scientific and Industrial Research), P.O. Box No. 6, Palampur 176 061, Himachal Pradesh, India.

Authors' contributions

PG carried out experiment at 15°C and 25°C, prepared cDNA library for Illumina sequencing, measured picosides content and performed expression analysis, HRS performed read generation, process of assembling, clustering, homology searching, annotation, CDD search, SSR markers discovery and entire computational analysis. NS performed sequencing run and expression analysis, AK performed sequencing run and cDNA library preparation for Illumina sequencing, VC developed the parallel coded filtering tool, FilteR, performed read filtering and GO functional enrichment analysis with hypergeometric tests. RS conceived, planned, developed and tested the protocols for the entire computational part of this study, performed reads based expression analysis and associated studies, developed the algorithm and tool for dissimilar sequence clustering and supervised the entire computational part of the study. PSA supported the work. SK conceived the study, designed the experiment, associated with wet lab work, results interpretation, analysis and integration of results and coordinated the study. PG, HRS drafted the manuscript. RS and SK drafted and finalized the manuscript. All authors have read and approved the manuscript.

Competing interests

The authors declare that they have no competing interests.

Received: 22 September 2011 Accepted: 31 March 2012
Published: 31 March 2012

References

- Chettri N, Sharma E, Lama SD: Non-timber forest products utilization, distribution and status in a trekking corridor of Sikkim, India. *Lyonia* 2005, **8**:89-101.
- Chaturvedi GN, Singh R: Jaundice of infectious hepatitis and its treatment with an indigenous drug, *Picrorhiza kurrooa*. *Indian J Med Res* 1966, **1**:1-13.
- Ansari RA, Aswal BS, Chander R, Dhawan BN, Garg NK, Kapoor NK, Kulshreshtha DK, Mehdi H, Mehrotra BN, Patnaik GK, Sharma SK: Hepatoprotective activity of kutkin-the iridoid glycoside mixture of *Picrorhiza kurrooa*. *Indian J Med Res* 1988, **87**:401-404.
- Nayar MP, Sastri ARK: *Red data plants of India* New Delhi: CSIR Publication; 1990.
- Kawoosa T, Singh H, Kumar A, Sharma SK, Devi K, Dutt S, Vats SK, Sharma M, Ahuja PS, Kumar S: Light and temperature regulated terpene biosynthesis: hepatoprotective monoterpene picosides accumulation in *Picrorhiza kurrooa*. *Funct Integr Genomics* 2010, **10**:393-404.
- Shinozaki K, Dennis ES: Cell signalling and gene regulation: global analyses of signal transduction and gene expression profiles. *Curr Opin Plant Biol* 2003, **6**:405-409.
- Parkinson J: In *Expressed Sequence Tags (ESTs) Generation and Analysis (Methods in Molecular Biology)*. Volume 533. New York: Humana Press; 2009.
- Rudd S: Expressed sequence tags: alternative or complement to whole genome sequences. *Trends Plant Sci* 2003, **8**:321-329.
- Ohlrogge J, Benning C: Unraveling plant metabolism by EST analysis. *Curr Opin Plant Biol* 2000, **3**:224-228.
- Morozova O, Hirst M, Marra MA: Applications of new sequencing technologies for transcriptome analysis. *Annu Rev Genomics Hum Genet* 2009, **10**:135-151.
- Shendure J, Ji H: Next-generation DNA sequencing. *Nat Biotechnol* 2008, **26**:1135-1145.
- Seki M, Narusaka M, Kamiya A, Ishida J, Satou M, Sakurai T, Nakajima M, Enju A, Akiyama K, Oono Y, Muramatsu M, Hayashizaki Y, Kawai J, Carninci P, Itoh M, Ishii Y, Arakawa T, Shibata K, Shinagawa A, Shinozaki K: Functional annotation of a full length Arabidopsis cDNA collection. *Science* 2002, **296**:141-145.
- Ruyter-Spira CP, de Koning DJ, van der Poel JJ, Crooijmans RP, Dijkhof RJ, Groenen M: Developing microsatellite markers from cDNA: A tool for adding expressed sequence tags to the genetic linkage map of the chicken. *Anim Genet* 1998, **29**:85-90.
- Eveland AL, McCarty DR, Koch KE: Transcript profiling by 3'-untranslated region sequencing resolves expression of gene families. *Plant Physiol* 2008, **146**:32-44.
- Li R, Zhu H, Ruan J, Qian W, Fang X, Shi Z, Li Y, Li S, Shan G, Kristiansen K, Li S, Yang H, Wang J, Wang J: *De novo* assembly of human genomes with massively parallel short read sequencing. *Genome Res* 2009, **20**:265-272.
- Wang XW, Luan JB, Li JM, Bao YY, Zhang CX, Liu SS: *De novo* characterization of a whitefly transcriptome and analysis of its gene expression during development. *BMC Genomics* 2010, **11**:400.
- Zerbino DR, Birney E: Velvet: algorithms for *de novo* short read assembly using de Bruijn graphs. *Genome Res* 2008, **18**:821-829.
- Tyagi S: Taking a census of mRNA populations with microbeads. *Nat Biotechnol* 2000, **18**:597-598.
- Wang SM: Understanding SAGE data. *Trends Genet* 2007, **23**:42-50.
- Dubey A, Farmer A, Schlueter J, Cannon SB, Abernathy B, Tuteja R, Woodward J, Shah T, Mulamanovic B, Kudapa H, Raju NL, Gothwal R, Pande S, Xiao Y, Twon CD, Singh NK, May GD, Jackson S, Varshney RK: Defining the transcriptome assembly and its use for genome dynamics and transcriptome profiling studies in pigeonpea (*Cajanus cajan* L.). *DNA Res* 2011, **18**:153-164.
- Jones-Rhoades MW, Borevitz JO, Preuss D: Genome-wide expression profiling of the Arabidopsis female gametophyte identifies families of small, secreted proteins. *PLoS Genet* 2007, **3**:1848-1861.
- Gan X, Stegle O, Behr J, Steffen JG, Drewe P, Hildebrand KL, Lyngsoe R, Schultheiss SJ, Osborne EJ, Sreedharan VT, Kahles A, Bohnert R, Jean G, Derwent P, Kersey P, Belfield EJ, Harberd NP, Kemen E, Toomajian C, Kover PX, Clark RM, Ratsch G, Mott Richard: Multiple reference genomes and transcriptomes for *Arabidopsis thaliana*. *Nature* 2011, **477**:419-423.
- Cheung F, Haas BJ, Goldberg SM, May GD, Xiao Y, Town CD: Sequencing *Medicago truncatula* expressed sequenced tags using 454 Life Sciences technology. *BMC Genomics* 2006, **7**:272.
- Ohtsu K, Smith MB, Emrich SJ, Borsuk LA, Zhou R, Chen T, Zhang X, Timmermans MC, Beck J, Buckner B, Janick-Buckner D, Nettleton D, Scanlon MJ, Schnable PS: Global gene expression analysis of the shoot apical meristem of maize (*Zea mays* L.). *Plant J* 2007, **52**:391-404.
- Wicker T, Narechania A, Sabot F, Stein J, Vu GT, Graner A, Ware D, Stein N: Low-pass shotgun sequencing of the barley genome facilitates rapid identification of genes, conserved non-coding sequences and novel repeats. *BMC Genomics* 2008, **9**:518.
- Moxon S, Jing R, Szittya G, Schwach F, Rusholme Pilcher RL, Moulton V, Dalmay T: Deep sequencing of tomato short RNAs identifies microRNAs targeting genes involved in fruit ripening. *Genome Res* 2008, **18**:1602-1609.
- Shi CY, Yang H, Wei CL, Yu O, Zhang ZZ, Jiang CJ, Sun J, Li YY, Chen Q, Xia T, Wan XC: Deep sequencing of the *Camellia sinensis* transcriptome revealed candidate genes for major metabolic pathways of tea-specific compounds. *BMC Genomics* 2011, **12**:131.
- Garg R, Patel RK, Tyagi AK, Jain M: *De novo* assembly of chickpea transcriptome using short reads for gene discovery and marker identification. *DNA Res* 2011, **18**:53-63.
- Simpson JT, Wong K, Jackman SD, Schein JE, Jones SJ, Birol I: ABySS: a parallel assembler for short read sequence data. *Genome Res* 2009, **19**:1117-1123.
- Larkindal J, Vierling E: Core genome responses involved in acclimation to high temperature. *Plant Physiol* 2008, **146**:748-761.
- Ewen-Campen B, Shane N, Panfilio KA, Suzuki Y, Roth S, Extavour CG: The maternal and early embryonic transcriptome of the milkweed bug *Oncopeltus fasciatus*. *BMC Genomics* 2011, **12**:61.
- Weber AP, Weber KL, Carr K, Wilkerson C, Ohlrogge JB: Sampling the Arabidopsis transcriptome with massively parallel pyrosequencing. *Plant Physiol* 2007, **144**:32-42.
- Mane SP, Evans C, Cooper KL, Crasta OR, Folkerts O, Hutchison SK, Harkins TT, Thierry-Mieg D, Thierry-Mieg J, Jensen RV: Transcriptome sequencing of the Microarray Quality Control (MAQC) RNA reference samples using next generation sequencing. *BMC Genomics* 2009, **10**:264.
- Carels N, Hatey P, Jabbari K, Bernardi G: Compositional properties of homologous coding sequences from plants. *J Mol Evol* 1998, **46**:45-53.
- Vinogradov AE: DNA helix: the importance of being GC-rich. *Nucleic Acids Res* 2003, **31**:1838-1844.

36. Wei W, Qi X, Wang L, Zhang Y, Hua W, Li D, Lv H, Zhang X: Characterization of the sesame (*Sesamum indicum* L.) global transcriptome using Illumina paired-end sequencing and development of EST-SSR markers. *BMC Genomics* 2011, **12**:451.
37. Scott KD, Eggler P, Seaton G, Rossetto M, Ablett EM, Lee LS, Henry RJ: Analysis of SSRs derived from grape ESTs. *Theor Appl Genet* 2000, **100**:723-726.
38. Saha S, Karaca M, Jenkins JN, Zipf AE, Reddy OUK, Kantety RV: Simple sequence repeats as useful resources to study transcribed genes of cotton. *Euphytica* 2003, **130**:355-364.
39. Han ZG, Guo WZ, Song XL, Zhang TZ: Genetic mapping of EST-derived microsatellites from the diploid *Gossypium arboreum* in allotetraploid cotton. *Mol Genet Genomics* 2004, **272**:308-327.
40. Morgante M, Hanafé M, Powell W: Microsatellites are preferentially present with non-repetitive DNA in plant genomes. *Nat Genet* 2002, **30**:194-200.
41. Varshney RK, Thiel T, Stein N, Langridge P, Graner A: *In silico* analysis on frequency and distribution of microsatellites in ESTs of some cereal species. *Cell Mol Biol Lett* 2002, **7**:537-546.
42. Purohit H, Nautiyal BP, Nautiyal MC: Interpopulation variation in *Picrorhiza kurroa* Royle ex Benth-step towards identifying genetic variability and elite strains for crop improvement study. *Am J Plant Physiol* 2008, **3**:154-164.
43. Katoch M, Fazil IS, Suri KA, Ahuja A, Qazi GN: Effect of altitude on picoside content in core collections of *Picrorhiza kurroa* from the north western Himalayas. *J Nat Med* 2011, **65**:578-582.
44. Fu X, Fu N, Guo S, Yan Z, Xu Y, Hu H, Menzel C, Chen W, Li Y, Zeng R, Khaitovich P: Estimating accuracy of RNA-Seq and microarrays with proteomics. *BMC Genomics* 2009, **10**:161.
45. Sasse JM: Physiological actions of brassinosteroids: an update. *J Plant Growth Regul* 2003, **22**:276-288.
46. Krishna P: Brassinosteroid-mediated stress responses. *J Plant Growth Regul* 2003, **22**:289-297.
47. Divi UK, Krishna P: Brassinosteroids confer stress tolerance. In *Plant stress biology: genomics goes systems biology*. Edited by: Hirt H, Weinheim: Wiley-VCH; 2009:119-135.
48. Smertenko A, Draber P, Viklicky V, Opatrny Z: Heat stress affects the organization of microtubules and cell division in *Nicotiana tabacum* cells. *Plant Cell Environ* 1997, **20**:1534-1542.
49. Li Z, Thomas TL: PE11, an embryo-specific zinc finger protein gene required for heart-stage embryo formation in *Arabidopsis*. *Plant Cell* 1998, **10**:383-398.
50. Aasland R, Gibson TJ, Stewart AF: The PHD finger: transcription factors for chromatin-mediated transcriptional regulation. *Trends Biochem Sci* 1995, **20**:56-59.
51. Parenicova L, de Folter S, Kieffer M, Horner DS, Favalli C, Busscher J, Cook HE, Ingram RM, Kater MM, Davies B, Angenent GC, Colombo L: Molecular and phylogenetic analyses of the complete MADS box transcription factor family in *Arabidopsis*: new openings to the MADS world. *Plant Cell* 2003, **15**:1538-1551.
52. Heim MA, Jakoby M, Werber M, Martin C, Weisshaar B, Bailey PC: The basic helix-loop-helix transcription factor family in plants: a genome-wide study of protein structure and functional diversity. *Mol Biol Evol* 2003, **20**:735-747.
53. Lin R, Ding L, Casola C, Ripoll DR, Feschotte C, Wang H: Transposase-derived transcription factors regulate light signalling in *Arabidopsis*. *Science* 2007, **318**:1302-1305.
54. Koini MA, Alvey L, Allen T, Tilley CA, Harberd NP, Whitelam GC, Franklin KA: High temperature-mediated adaptations in plant architecture require the bHLH transcription factor PIF4. *Current Biol* 2009, **19**:408-413.
55. Turck F, Zhou A, Somssich IE: Stimulus-dependent, promoter-specific binding of transcription factor WRKY1 to its native promoter and the defense-related gene PcPR1-1 in parsley. *Plant Cell* 2004, **16**:2573-2585.
56. Mu J, Tan H, Zheng Q, Fu F, Liang Y, Zhang J, Yang X, Wang T, Chong K, Wang XJ, Zuo J: Leafy Cotyledon 1 is a key regulator of fatty acid biosynthesis in *Arabidopsis*. *Plant Physiol* 2008, **148**:1042-1054.
57. Geigenberger P: Regulation of starch biosynthesis in response to a fluctuating environment. *Plant Physiol* 2011, **155**:1566-1577.
58. Sood H, Chauhan RS: Development of low cost micropropagation technology for an endangered medicinal herb (*Picrorhiza kurroa*) of north-western Himalayas. *J Plant Sci* 2009, **4**:21-31.
59. Dixon RA, Paiva NL: Stress-induced phenylpropanoid metabolism. *Plant Cell* 1995, **7**:1085-1097.
60. Wise ML, Croteau R: Monoterpene biosynthesis. In *Comprehensive natural products chemistry. Volume 2*. Edited by: Cane DE. Oxford: Pergamon Press; 1998.
61. Rodriguez-Concepcion M, Boronat A: Elucidation of the methylerythritol phosphate pathway for isoprenoid biosynthesis in bacteria and plastids: a metabolic milestone achieved through genomics. *Plant Physiol* 2002, **130**:1079-1089.
62. Mahmoud SS, Croteau R: Strategies for transgenic manipulation of monoterpene biosynthesis in plants. *Trends Plant Sci* 2002, **7**:366-373.
63. Dudareva N, Andersson S, Orlova I, Gatto N, Reichelt M, Rhodes D, Boland W, Gershenzon J: The nonmevalonate pathway supports both monoterpene and sesquiterpene formation in snapdragon flowers. *Proc Natl Acad Sci USA* 2005, **102**:933-938.
64. Hampel D, Mosandl A, Wust M: Biosynthesis of mono- and sesquiterpenes in strawberry fruits and foliage: 2H labeling studies. *J Agric Food Chem* 2006, **54**:1473-1478.
65. Schuhr CA, Radykewicz T, Sagner S, Latzel C, Zenk MH, Arigoni D, Bacher A, Rohdich F, Eisenreich W: Quantitative assessment of crosstalk between the two isoprenoid biosynthesis pathways in plants by NMR spectroscopy. *Phytochem Rev* 2003, **2**:3-16.
66. Schuhr CA, Radykewicz T, Sagner S, Latzel C, Zenk MH, Arigoni D, Bacher A, Rohdich F, Eisenreich W: Biosynthesis of mono- and sesquiterpenes in carrot roots and leaves (*Daucus carota* L.): metabolic cross talk of cytosolic mevalonate and plastidial methylerythritol phosphate pathways. *Phytochemistry* 2005, **66**:305-311.
67. Qureshi N, Porter W: Conversion of acetyl-coenzyme A to isopentenyl pyrophosphate. In *Biosynthesis of Isoprenoid Compounds. Volume 1*. Edited by: Porter JW, Spurgeon SL. New York: John Wiley; 1981.
68. Newman JD, Chappell J: Isoprenoid biosynthesis in plants: carbon partitioning within the cytoplasmic pathway. *Crit Rev Biochem Mol Biol* 1999, **34**:95-106.
69. Eisenreich W, Schwarz M, Cartayrade A, Arigoni D, Zenk MH, Bacher A: The deoxyxylulose phosphate pathway of terpenoid biosynthesis in plants and microorganisms. *Chem Biol* 1998, **5**:221-233.
70. Rohmer M: The mevalonate independent methylerythritol 4-phosphate (MEP) pathway for isoprenoid biosynthesis, including carotenoids. *Pure Appl Chem* 1999, **71**:2279-2284.
71. Palazon J, Cusido RM, Bonfill M, Morales C, Pinol MT: Inhibition of paclitaxel and baccatin III accumulation by mevinolin and fosmidomycin in suspension cultures of *Taxus baccata*. *Biotechnol J* 2003, **101**:157-163.
72. Laule O, Fürholz A, Chang HS, Zhu T, Wang X, Heifetz PB, Gruissem W, Lange M: Crosstalk between cytosolic and plastidial pathways of isoprenoid biosynthesis in *Arabidopsis thaliana*. *Proc Natl Acad Sci USA* 2003, **100**:6866-6871.
73. Souret F, Weathers PJ, Wobbe KK: The mevalonate independent pathway is expressed in transformed roots of *Artemisia annua* and regulated by light and culture age. *In Vitro Cell Dev Biol Plant* 2002, **38**:581-588.
74. Hirschberg J: Carotenoid biosynthesis in flowering plants. *Curr Opin Plant Biol* 2001, **4**:210-218.
75. Dellapenna D, Pogson BJ: Vitamin synthesis in plants: tocopherols and carotenoids. *Annu Rev Plant Biol* 2006, **57**:711-738.
76. Cragg GM, Newman DJ: Plants as a source of anti-cancer and anti-HIV agents. *Ann Appl Biol* 2003, **143**:127-133.
77. Rivero RM, Ruiz JM, Garcia PC, Lopez-Lefebvre LR, Sanchez E, Romero L: Resistance to cold and heat stress: accumulation of phenolic compounds in tomato and watermelon plants. *Plant Sci* 2001, **160**:315-321.
78. Kawaoka A, Kaothien P, Yoshida K, Endo S, Yamada K, Ebinuma H: Functional analysis of tobacco LIM protein Ntlm1 involved in lignin biosynthesis. *Plant J* 2000, **22**:289-301.
79. Uesato S, Matsuda S, Inouye H: Mechanism for iridane skeleton formation from acyclic monoterpenes in the biosynthesis of secologanin and vindoline in *Catharanthus roseus* and *Lonicera morrowii*. *Chem Pharm Bull* 1984, **23**:1671-1674.
80. Schuler MA, Werck-Reichhart D: Functional genomics of P450s. *Annu Rev Plant Biol* 2003, **54**:629-667.
81. Nelson DR, Schuler MA, Paquette SM, Werck-Reichhart D, Bak S: Comparative genomics of rice and *Arabidopsis*. Analysis of 727

- cytochrome P450 genes and pseudogenes from a monocot and a dicot. *Plant Physiol* 2004, **135**:756-772.
82. Meehan TD, Coscia CJ: **Hydroxylation of geraniol and nerol by a monooxygenase from *Vinca rosea***. *Biochem Biophys Res Commun* 1973, **53**:1043-1048.
 83. Karp F, Mihaliak CA, Harris JL, Croteau R: **Monoterpene biosynthesis: specificity of the hydroxylations of (-)-limonene by enzyme preparations from peppermint (*Mentha piperita*), spearmint (*Mentha spicata*), and perilla (*Perilla frutescens*) leaves**. *Arch Biochem Biophys* 1990, **276**:219-226.
 84. Karp F, Croteau R: **Hydroxylation of (-)- β -pinene and (-)- α -pinene by cytochrome P450 system from hyssop (*Hyssopus officinalis*)**. In *Secondary metabolite biosynthesis and metabolism. Volume 44*. Edited by: Petroski RJ, McCormick SP. New York: Plenum Press; 1992:253.
 85. Karp F, Harris JL, Croteau R: **Metabolism of monoterpenes: demonstration of the hydroxylation of (+)-sabinene to (+)-cis-sabinol by an enzyme preparation from sage (*Salvia officinalis*) leaves**. *Arch Biochem Biophys* 1987, **256**:179-193.
 86. Funk C, Croteau R: **Induction and characterization of a cytochrome P-450 dependent camphor hydroxylase in tissue cultures of common sage (*Salvia officinalis*)**. *Plant Physiol* 1993, **101**:1231-1237.
 87. Funk C, Croteau R: **Diterpenoid resin acid biosynthesis in conifers: characterization of two cytochrome P450-dependent monooxygenases and an aldehyde dehydrogenase involved in abietic acid biosynthesis**. *Arch Biochem Biophys* 1994, **308**:258-266.
 88. Bolwell GP, Bozak K, Zimmerlin A: **Plant Cytochrome P450**. *Phytochemistry* 1994, **37**:1491-1506.
 89. Gachon CMM, Langlois-Meurinne M, Saindrenan P: **Plant secondary metabolism glycosyltransferases: the emerging functional analysis**. *Trends Plant Sci* 2005, **10**:1360-1385.
 90. Coutinho PM, Deleury E, Davies GJ, Henrissat B: **An evolving hierarchical family classification for glycosyltransferases**. *J Mol Biol* 2003, **328**:307-317.
 91. Jones P, Vogt T: **Glycosyltransferases in secondary plant metabolism: tranquilizers and stimulant controllers**. *Planta* 2001, **213**:164-174.
 92. Singh K, Raizada J, Bhardwaj P, Ghawana S, Rani A, Singh H, Kaul K, Kumar S: **26S rRNA-based internal control gene primer pair for reverse transcriptase-polymerase chain reaction-based quantitative expression studies in diverse plant species**. *Anal Biochem* 2004, **335**:330-333.
 93. Zenoni S, Ferrarini A, Giacomelli E, Xumerle L, Fasoli M, Malerba G, Bellin D, Pezzotti M, Delledonne M: **Characterization of transcriptional complexity during berry development in *Vitis vinifera* using RNA-Seq**. *Plant Physiol* 2010, **152**:1787-1795.
 94. Singh H, Gahlan P, Dutt S, Ahuja PS, Kumar S: **Why uproot *Picrorhiza kurroa*, an endangered medicinal herb?** *Curr Sci* 2011, **100**:1055-1059.
 95. Ghawana S, Paul A, Kumar H, Kumar A, Singh H, Bhardwaj PK, Rani A, Singh RS, Raizada J, Singh K, Kumar S: **An RNA isolation system for plant tissues rich in secondary metabolites**. *BMC Res Notes* 2011, **4**:85.
 96. Li W, Godzik A: **Cd-hit: a fast program for clustering and comparing large sets of protein or nucleotide sequences**. *Bioinformatics* 2006, **22**:1658-1659.
 97. Li W, Jaroszewski L, Godzik A: **Sequence clustering strategies improve remote homology recognitions while reducing search times**. *Protein Eng* 2002, **15**:643-649.
 98. Perteza G, Huang X, Liang F, Antonescu V, Sultana R, Karamycheva S, Lee Y, White J, Cheung F, Parvizi B, Tsai J, Quackenbush J: **TIGR Gene Indices clustering tools (TGICL): a software system for fast clustering of large EST datasets**. *Bioinformatics* 2003, **19**:651-652.
 99. **Non Redundant Protein Database**. [ftp://ftp.ncbi.nih.gov/blast/db/FASTA/nr.gz].
 100. **UniProt Database**. [http://www.uniprot.org/downloads].
 101. **Gene Ontology Database**. [http://www.geneontology.org].
 102. **KEGG Database**. [http://www.kegg.jp/kegg/download/].
 103. **Annot8r Program**. [http://www.nematodes.org/bioinformatics/annot8r/].
 104. **Plant Transcription Factor Database**. [http://plntfdb.bio.uni-potsdam.de].
 105. **BiNGO Program**. [http://www.psb.ugent.be/cbd/papers/BiNGO/Home.html].
 106. Steven M, Heymans K, Kuiper M: **BINGO: a Cytoscape plugin to assess over representation of Gene Ontology categories in Biological Networks**. *Bioinformatics* 2005, **21**:3448-3449.
 107. **Conserved Domain Database**. [ftp://ftp.ncbi.nih.gov/pub/mmdb/cdd/].
 108. Altschul SF, Gish W, Miller W, Myers EW, Lipman DJ: **Basic local alignment search tool**. *J Mol Biol* 1990, **215**:403-410.
 109. Bauer AM, Lu S, Anderson JB, Chitsaz F, Derbyshire MK, Scott CD, Fong JH, Geer LY, Geer RC, Gonzales NR, Gwadz M, Hurwitz DI, Jackson JD, Ke Z, Lanczycki CJ, Lu F, Marchler GH, Mullokandov M, Omelchenko MV, Robertson CL, Song JS, Thanki N, Yamashita RA, Zhang D, Zhang N, Zheng C, Bryant SH: **CDD: a Conserved domain database for the functional annotation of proteins**. *Nucleic Acids Res* 2011, **39**:225-229.
 110. Mortazavi A, Williams BA, McCue K, Schaeffer L, Wold B: **Mapping and quantifying mammalian transcriptomes by RNA-Seq**. *Nat Methods* 2008, **5**:621-628.
 111. Jiang H, Wong WH: **SeqMap: mapping massive amount of oligonucleotides to the genome**. *Bioinformatics* 2008, **24**:2395-2396.
 112. Jiang H, Wong WH: **Statistical inferences for isoform expression in RNA-Seq**. *Bioinformatics* 2009, **25**:1026-1032.
 113. **MISA Program**. [http://pgcr.ipk-gatersleben.de/misa].

doi:10.1186/1471-2164-13-126

Cite this article as: Gahlan et al.: *De novo* sequencing and characterization of *Picrorhiza kurroa* transcriptome at two temperatures showed major transcriptome adjustments. *BMC Genomics* 2012 **13**:126.

Submit your next manuscript to BioMed Central and take full advantage of:

- Convenient online submission
- Thorough peer review
- No space constraints or color figure charges
- Immediate publication on acceptance
- Inclusion in PubMed, CAS, Scopus and Google Scholar
- Research which is freely available for redistribution

Submit your manuscript at
www.biomedcentral.com/submit

