

DATABASE

Open Access

# AtPAN: an integrated system for reconstructing transcriptional regulatory networks in *Arabidopsis thaliana*

Yi-An Chen<sup>1</sup>, Ying-Chi Wen<sup>1</sup> and Wen-Chi Chang<sup>1,2\*</sup>

## Abstract

**Background:** Construction of transcriptional regulatory networks (TRNs) is of priority concern in systems biology. Numerous high-throughput approaches, including microarray and next-generation sequencing, are extensively adopted to examine transcriptional expression patterns on the whole-genome scale; those data are helpful in reconstructing TRNs. Identifying transcription factor binding sites (TFBSs) in a gene promoter is the initial step in elucidating the transcriptional regulation mechanism. Since transcription factors usually co-regulate a common group of genes by forming regulatory modules with similar TFBSs. Therefore, the combinatorial interactions of transcription factors must be modeled to reconstruct the gene regulatory networks.

**Description** For systems biology applications, this work develops a novel database called *Arabidopsis thaliana* Promoter Analysis Net (AtPAN), capable of detecting TFBSs and their corresponding transcription factors (TFs) in a promoter or a set of promoters in *Arabidopsis*. For further analysis, according to the microarray expression data and literature, the co-expressed TFs and their target genes can be retrieved from AtPAN. Additionally, proteins interacting with the co-expressed TFs are also incorporated to reconstruct co-expressed TRNs. Moreover, combinatorial TFs can be detected by the frequency of TFBSs co-occurrence in a group of gene promoters. In addition, TFBSs in the conserved regions between the two input sequences or homologous genes in *Arabidopsis* and rice are also provided in AtPAN. The output results also suggest conducting wet experiments in the future.

**Conclusions:** The AtPAN, which has a user-friendly input/output interface and provide graphical view of the TRNs. This novel and creative resource is freely available online at <http://AtPAN.itps.ncku.edu.tw/>.

## Background

Appropriately regulating the gene expression in plants is essential for developing or responding to an environmental stimulus. At the transcription level, transcription factors (TFs) profoundly impact gene expression, acting either as activators or repressors by binding to the promoter of target genes (TGs). Many bioinformatics web servers, including PlantCARE [1], AthaMap [2,3] and PlantPAN [4] have adopted the analysis of transcription factors and their corresponding binding sites in the promoter of genes as their primary strategy. However, most of those servers only provide information on transcription factor binding sites (TFBSs) and neglect their

corresponding transcription factors. As a valuable resource for gene regulatory studies in *Arabidopsis* (*Arabidopsis thaliana*), AGRIS [5] provides transcription factors, predicted and experimentally verified *cis*-regulatory elements (CREs) as well as their interactions. Unfortunately, AGRIS lacks an interface for customized sequence analysis. Although the above resources have big contribution in advance the knowledge about gene regulation in plants, a common problem that users encounter when using these resources is that numerous TFBSs appear in the analysis results and are confused to select candidate TFBSs for further experiments. Above developments motivate this work to develop a more accurate system to elucidate the gene transcription regulatory networks (TRNs).

Microarray high throughput method is helpful in understanding whole genome gene expression profiles.

\* Correspondence: [sarah321@mail.ncku.edu.tw](mailto:sarah321@mail.ncku.edu.tw)

<sup>1</sup>Institute of Tropical Plant Sciences, National Cheng Kung University, Tainan 701, Taiwan

Full list of author information is available at the end of the article

Following the development of whole-genome microarrays and the increased availability of gene expression data in *Arabidopsis*, significant efforts have been denoted to unraveling the relationships between genes, such as GeneMANIA [6] and ATTED-II [7]. Both of these approaches integrate microarray datasets and calculate the level of co-expression between each pair of genes by a mutual rank (MR) or Pearson correlation score. Although some web servers have constructed networks by co-expression analysis, inferring the underlying genetic networks by relying only on the microarray data may be inadequate evidence. Therefore, how to combine the promoter analysis with the microarray data has received considerable interest. As demonstrated previously, genes with a similar expression pattern are often enriched for similar functions [8]. Vandepoele et al. also indicated that the genes with similar *cis*-regulatory elements are typically co-expressed in microarray analysis [8]. However, to our knowledge, none of the resources incorporate microarray co-expression data of TFs and their TGs in promoter analysis system or in TRNs reconstruction system in *Arabidopsis*. Consequently, in addition to integrating microarray co-expression data in the promoter analysis system, this work attempts to provide high confident TFs that are co-expressed with their TGs.

The databases IntAct [9], BioGRID [10], and BIND [11] help to elucidate protein-protein interactions. Recently, while collecting several sets of molecular interactions data from IntAct, BioGRID, BIND, and TAIR databases, PAIR [12] has supplied 5,990 experimentally reported molecular interactions in *Arabidopsis thaliana* together with 145,494 predicted interactions, making it the most comprehensive and highly reliable database of the *Arabidopsis* interactome. Comprehensively displaying TRNs requires taking the relationship between TFs and other proteins into consideration. In addition to the promoter analysis in a single gene, Su et al. posited that the transcription factors co-regulate a common group of genes by forming regulatory modules, which consist of analogous TFBSs; in addition, TFs and genes targeted by the same TFs may have a similar expression pattern and function [13]. Hence, the combinatorial interactions of transcription factors must be modeled to reconstruct the gene regulatory networks.

This work develops a comprehensive system, AtPAN (*Arabidopsis thaliana* Promoter Analysis Net), for promoter analysis in *Arabidopsis*. Additional file 1: Figure S1 illustrates the concepts of AtPAN. These concepts are helpful in elucidating the relationship between TFs and their TGs, as well as reconstructing their TRNs. The experimental and computational prediction results are easily distinguished from the output results. Additionally, AtPAN provides a comparative analysis function to

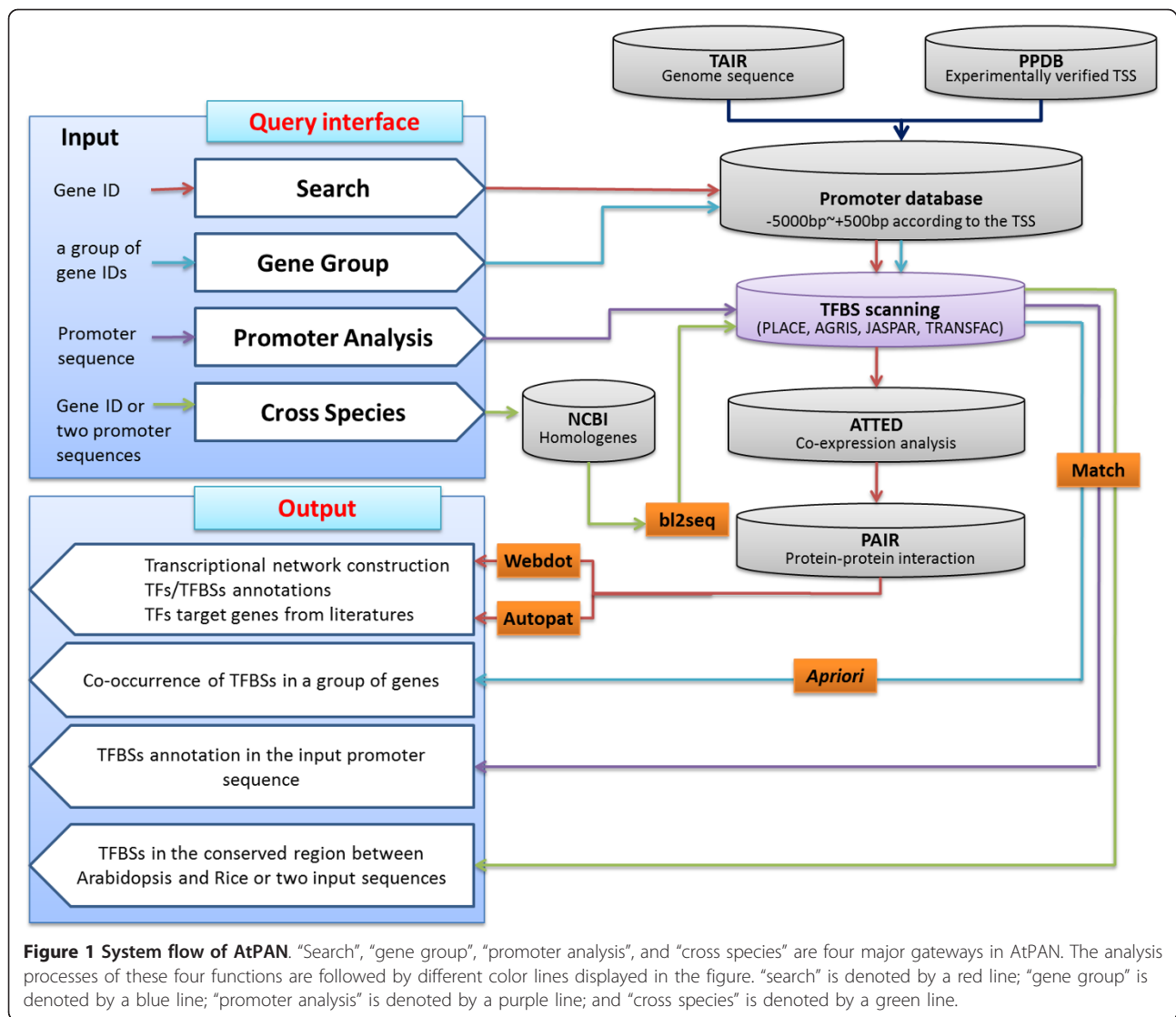
identify the TFBSs in conserved regions between promoters of homologous genes or two input sequences. Different graphical outputs depending on a user's requests can be downloaded to simply present the bioinformatics analysis results for biologists. Thus, AtPAN is an effective and user-friendly resource for analyzing gene regulation in *Arabidopsis*.

### Construction and content

AtPAN, a web-based system, runs on an Apache web server on a Linux operation system. Contents of the integrated databases (including gene information, gene ontology (GO), gene sequence, promoter sequence, TFBSs, TFs, the information of protein-protein interaction, and gene co-expression data from microarray data) are stored in a MySQL relational database system. Also, all tables are connected by Gene ID. All web pages and data parsers are written in PHP and Perl. Figure 1 displays the system flow chart of AtPAN. The detailed methods are described as follows.

### Integrating external databases

Gene information (i.e. gene ID, gene locus, gene description, gene location, GO terms, and genomic sequence) of *Arabidopsis thaliana* were obtained from TAIR (TAIR10\_genome\_release) [14]. The genomic positions of 13,699 experimentally verified transcription start sites (TSSs) were downloaded from PPDB (plantpromoterdb) [15]. Additionally, the promoter sequence of each gene in AtPAN was determined as the region from 5000 bp upstream to 500 bp downstream of the TSSs. For genes lacking positional information on the TSSs, the gene start sites recorded in TAIR database were used as the point of reference. The number of collected gene transcripts from *Arabidopsis* is 39,296. Additionally, the annotated information on the homologous genes was obtained from the NCBI homologue database [16]. The number of homologous groups of *Arabidopsis* and rice is 22,436 pairs. Moreover, the metabolic pathway maps of each gene were collected from Kyoto Encyclopedia of Genes and Genomes (KEGG) database [17]. Furthermore, the transcription factor binding profiles were collected from PLACE [18], TRANSFAC (public release 7.0) [19], AGRIS [5] and JASPAR [20]. The TFBSs and their corresponding TFs were collected manually from the literature and public resources described above. The number of TFs (which have corresponding TFBSs) used in TFBSs scanning in AtPAN is 441. To identify co-regulated TFs and their target genes, co-expression microarray data were downloaded from ATTED-II c4.1 [21]. The protein-protein interactions (PPIs) for TRNs reconstruction were accessed from PAIR [12]. The experimentally verified and computationally predicted PPIs are 5,812 and 141,605, respectively.



### Identifying TFBSs in promoter sequences and homologous conserved regions

Following determination of the promoter region, the transcription factor binding profiles were used to scan TFBSs in promoter sequences. MATCH detects the TFBSs in a promoter sequence by using the TFBS matrix from TRANSFAC public release 7.0 [19]. The default values of core similarity and matrix similarity of MATCH program were set to 0.9 and 0.8, respectively. The consensus TF binding sequences from PLACE, AGRIS and JASPAR were also used to scan TFBSs in a promoter sequence by homemade perl program. The TFBS enrichment score denotes the percentage of genes harboring this TFBS consensus sequence in their promoter. The score is calculated as the following formula: the number of genes harboring this TFBS sequence in their promoter over the total number of *Arabidopsis* genes. The lower

enrichment score implies a more significant amount of the TFBS. To identify TFBSs in conserved homologous gene promoters, the homologous genes among *Arabidopsis* and rice in the cross-species analysis were extracted from NCBI. The program BLAST 2 Sequences [22] was used to define the conserved regions in each pair of homologues. Based on the conservation of homologous promoter sequences, TFBSs within the conserved regions were identified. The identified conserved sites are more reliable than those non-conserved regions in the analyses of the transcriptional regulation in *Arabidopsis* genes.

### Identifying co-expressed TRNs of TFs and their target genes

The co-expression microarray data were used to determine high confident TFs from numerous predicted TFs in a gene promoter. The co-expression microarray data

were downloaded from ATTED-II c4.1 [21]. Mutual Rank (MR) values were used to evaluate the correlation between gene A and gene B in ATTED-II. Mutual Rank (MR) is the geometric average of the Pearson's correlation coefficients (PCCs) rank from gene A to gene B and that of gene B to gene A, and it performs well to compare the coexpression strengths than PCCs in previous study (Obayashi and Kinoshita, 2009). Here, the reconstruction of co-expressed TRNs corresponded to MR values in AtPAN. If users search for the TFBSs in a gene promoter, the predicted TFBSs and their corresponding TFs appear in the results page. AtPAN then calculates MR values of each pair of gene A and predicted TFs. If the MR values of the pair of TFs and gene A exceed the setting threshold, the TFs are defined as high confident TFs. The co-expressed genes were also retrieved according to the high confident TFs. Consequently, the co-expressed TRNs can be identified. Notably, MR values were normalized from 0 to 1 since the range of MR values provided from ATTED-II is too large and not convenient for users to set the threshold in web page. The normalized MR score can be set, depending on the users. A larger score implies a higher correlation of the pair genes.

Furthermore, the TRNs of each TFs and their target genes were also determined in AtPAN. As an unsupervised pattern search method, AutoPat reconstructs the relationships between TFs and their target genes from literatures [23]. AtPAN incorporate AutoPat method to identify the networks of TFs and their target genes. Additionally, the relationships of TFs and other proteins were considered in TRNs reconstruction. The experimental and predicted PPIs data were downloaded from PAIR database and utilized in TRNs construction.

#### Identifying the co-occurrence of TFs/TFBSs in a group of gene promoters

A group of gene IDs and promoter sequences is allowed to input the system in order to identify the TFs that co-regulate a group of genes. All possible TFs/TFBSs in the group of promoters were then determined. Consequently, *Apriori* is implemented to mine association rules for a group of input data [24]. A set of TFs, which bind to target sites, is assumed to participate in regulating gene transcription. Here, *Apriori* was used to discover the co-occurrence of TFs/TFBSs and combinatorial TFs/TFBSs in a group of promoter sequences. Two important parameters, *Support* and *confidence*, should be considered in utility of *Apriori*. The Support score is the frequency of promoters containing the combinatorial TF/TFBS A and B, while the confidence is the frequency of promoters containing TF/TFBS A also containing B. Following mining of the co-occurrences of TFs/TFBSs in the group of gene promoter sequences, the statistical significance of

each TF/TFBS should be examined against the background set of gene promoters, based on the hypergeometric equation (*p*-value) as refer to Chang et al. [4]. After the threshold of support and confidence score by user are set, the combinatorial TFs/TFBSs that co-regulate the gene group can be identified. Furthermore, protein-protein interaction and TF-target genes network could be reconstructed. A support vector machine (SVM) PPIs prediction model was provided from PAIR. The edge of PPIs map was determined using the SVM score. To extend the efficacy of "Gene Group" analysis of AtPAN, the SVM score can be set by users to identify various TRNs, depending on how large the edges of interested.

#### Graphical visualization and table list

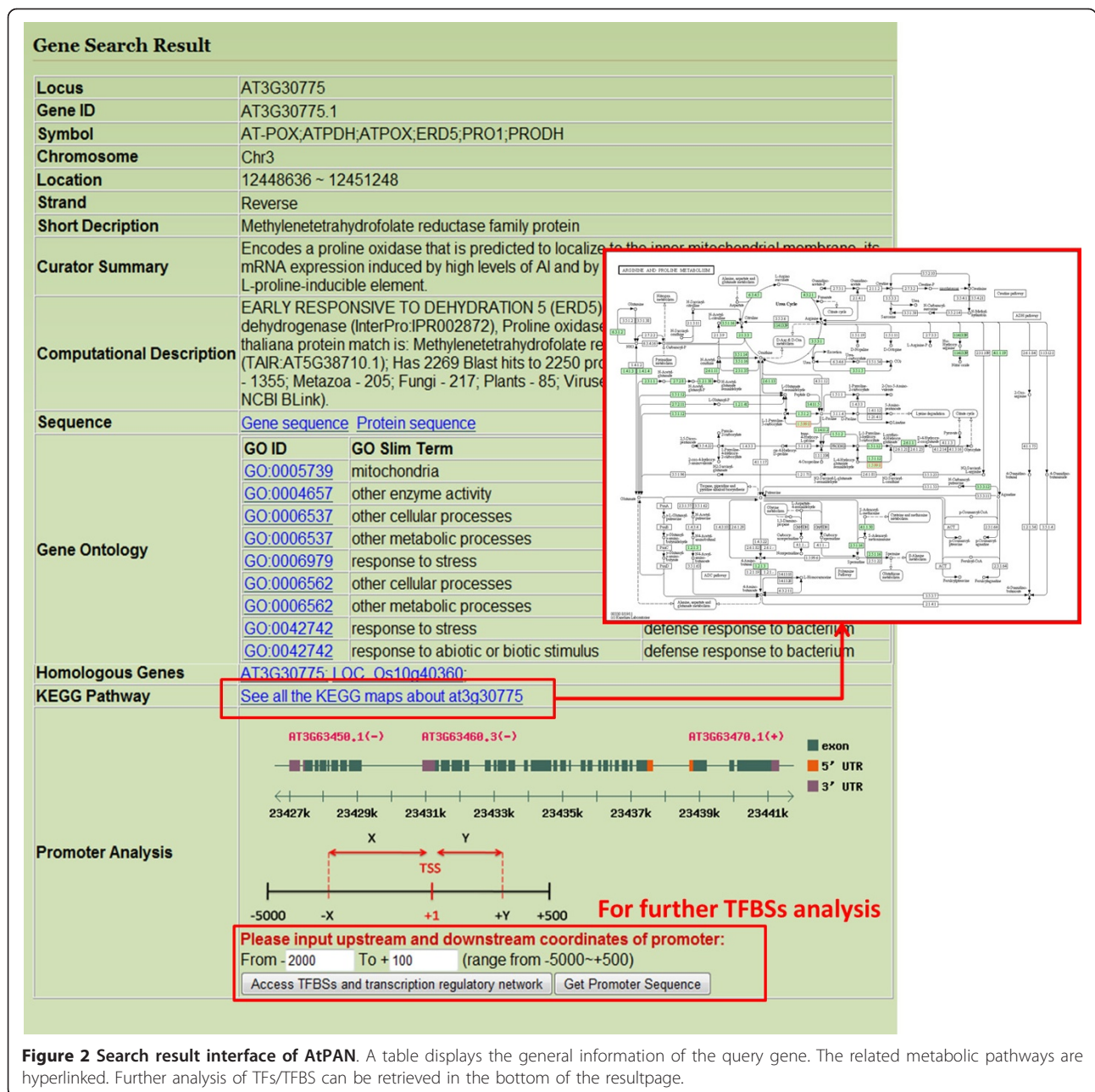
The regulatory features located in the promoters were presented graphically or tabulated. A graphical interface was implemented using the GD library of a PHP programming language. Graphviz is a graph visualization software for drawing TRNs in AtPAN. Following completion of the analysis, numerous regulatory characteristics, including TFBSs, PPIs, and the relationships between TFs and TGs, are both shown in a graph and a table.

#### Utility

##### *Web interface of the AtPAN system*

AtPAN is a web-based system that can thoroughly identify co-expression TRNs, including protein-protein interaction and relationship of TFs-TGs in *Arabidopsis*. AtPAN allows user queries based on gene ID, locus, keywords and sequence. After promoter extraction, the system can identify efficiently the TRNs incorporated with co-expression microarray data. The TFBSs within the conserved regions of homologous genes can also be determined. Moreover, the combinatorial TFs/TFBSs can be identified in a group of gene promoter sequences. The protein-protein interaction and TFs-TGs TRNs of a group of genes can be retrieved. The web interface of AtPAN is illustrated briefly as follows.

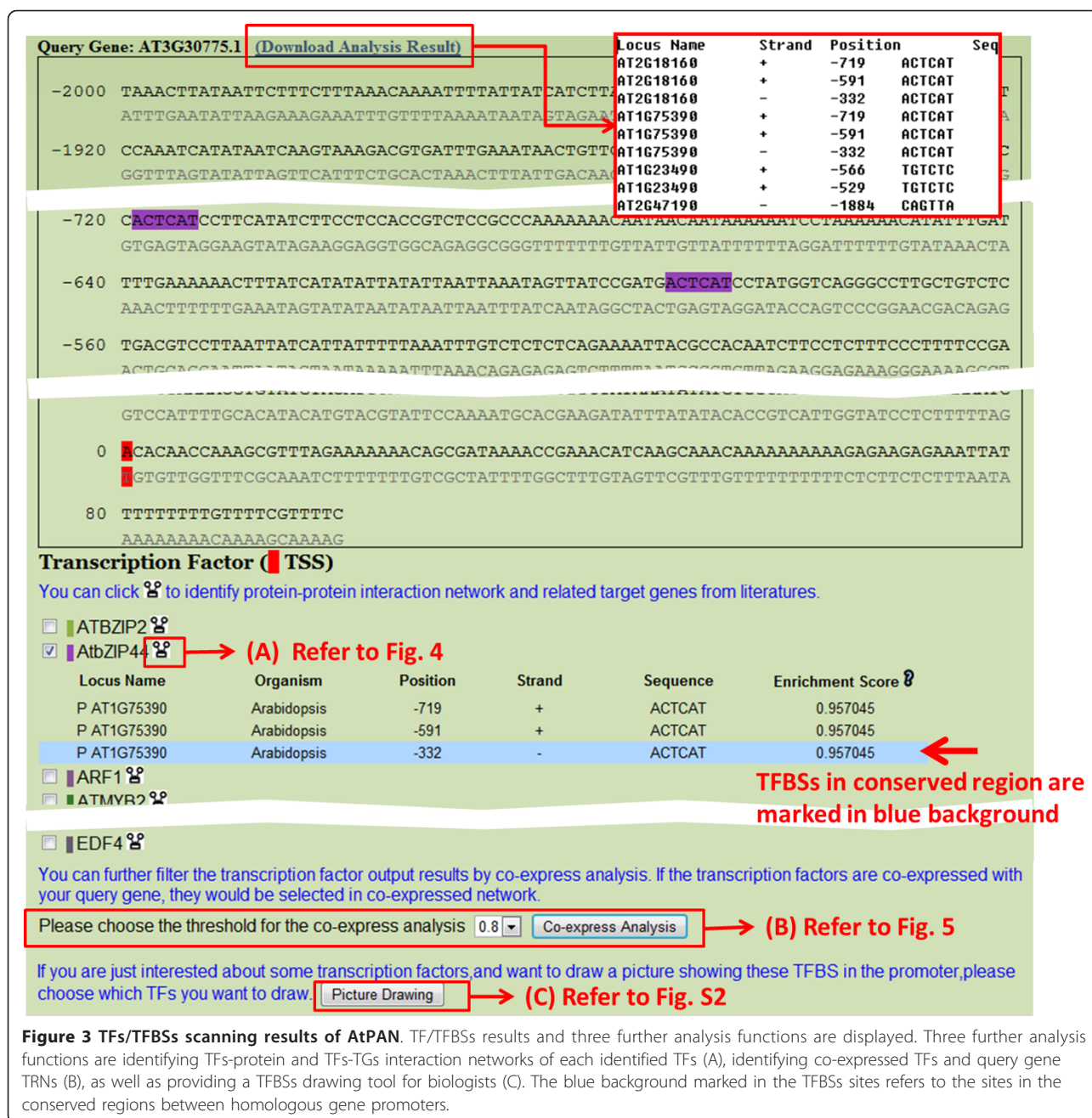
The major functions of AtPAN are to identify high confidence TFs/TFBSs in promoter sequences and reconstruct TRNs in *Arabidopsis*. Four gateways in the AtPAN web interface are search, gene group, promoter analysis, and cross species. In the search gateway, a gene IDs, locus and keywords are allowed for further analysis. Figure 2 displays the interface of output results of the search function. The interface contains general information such as gene symbol, description, chromosome location, and gene ontology (GO) of the input gene. Moreover, the metabolic pathways related to the search genes can be retrieved in AtPAN. AtPAN also provides a flexible interface to obtain gene, protein and promoter sequences. At the bottom of the



**Figure 2 Search result interface of AtPAN.** A table displays the general information of the query gene. The related metabolic pathways are hyperlinked. Further analysis of TFs/TFBS can be retrieved in the bottom of the resultpage.

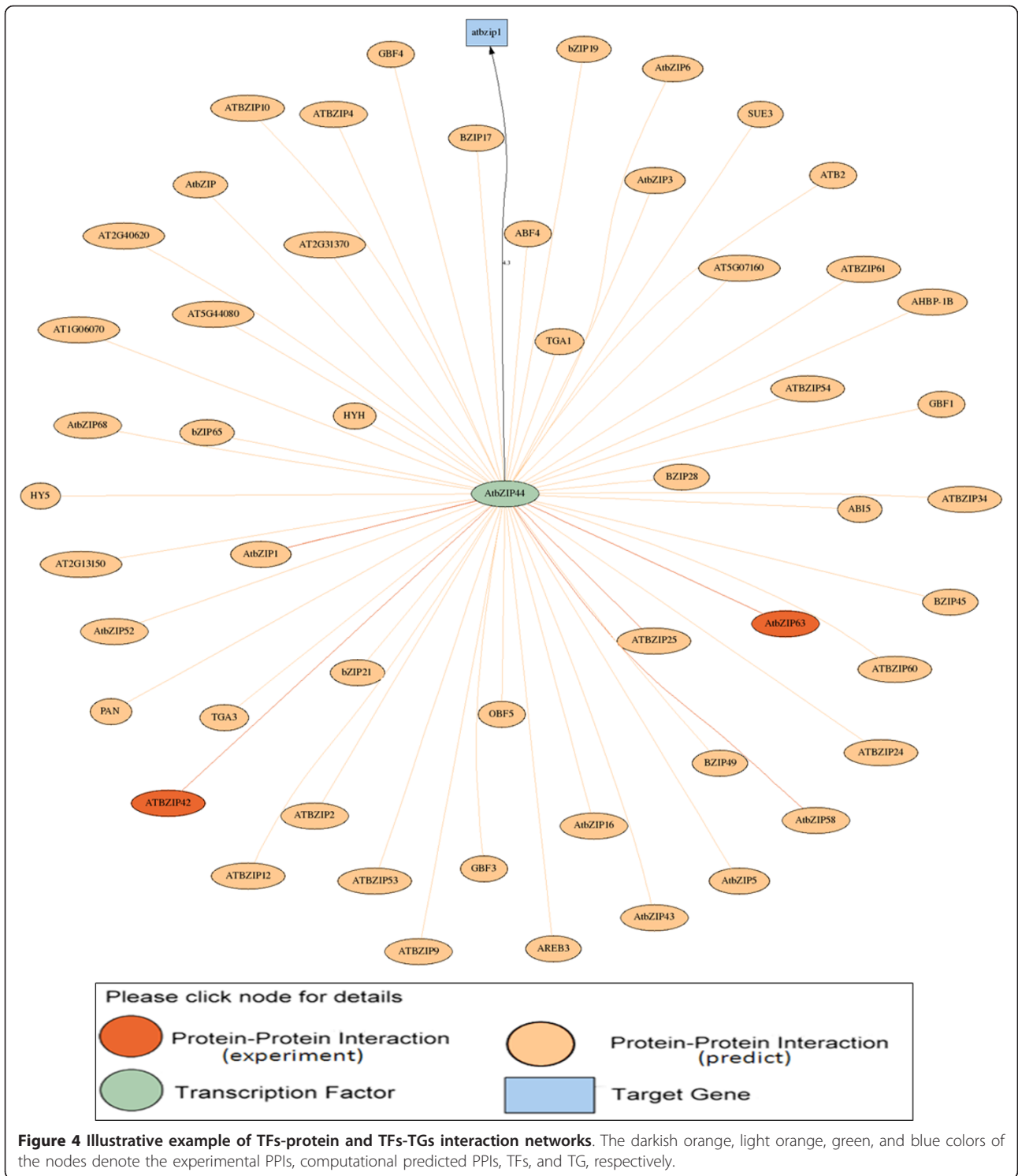
result page, a button is designed to further analyze TFs/TFBSs in the promoter region and TRNs reconstruction. Figure 3 summarizes the TF/TFBSs scanning results of AtPAN. This result page displays TF/TFBSs results and three further analysis functions. First, the page lists the TFs identified in the promoter region, in which TFBSs are marked in different colors according to the sequence. If the TFBSs are determined in the conserved regions between *Arabidopsis* and rice, the sites information is marked in a blue background (Figure 3). Consequently, three further analysis functions are identifying TFs-protein and TFs-TGs interaction networks of each identified TFs,

identifying co-expressed TFs and query gene TRNs, and providing a TFBSs drawing tool for biologists. A miniature figure besides each TF can be clicked for TFs-protein and TFs-TGs interaction networks. Figure 4 displays an example of the output interface. Additionally, various co-express analysis thresholds can be set to reconstruct the co-expressed TRNs. The expression profiles of TFs that are co-expressed with the query gene can be figured out together with all co-expressed genes in a TRN. Figure 5 illustrates such an example. Finally, a special tool developed by AtPAN is "TFBSs drawing tool". Some users always require schematic diagrams of promoter analysis



results for presentation. Here, users can select the TFBSs that they want to display. Additional file 1: Figure S2 shows the automatic generation of a schematic diagram. The gene group analysis function shows a group of *Arabidopsis* IDs that are allowed to input into the system, co-occurrence of one TF/TFBS and combinatorial TFs/TFBSs in a set of promoters then be obtained. The protein-protein interaction and TFs-TGs TRNs of this group of genes can be retrieved by further analysis in AtPAN (Figure 6). Moreover, the function of promoter analysis resembles that of search. Differently, a promoter sequence is required

and TFBSs profiles from *Arabidopsis* or all plants can be used to identify TFBSs in the query sequence. Additionally, the cross species gateway function can conveniently analyze TF/TFBSs in the conserved regions between homologous gene promoters by the direct input of *Arabidopsis* Gene ID or two promoter sequences in the FASTA format. Following processing of the input data, the paired sequences are displayed in distinct colors to distinguish the conserved regions from the non-conserved regions. Additional file 1: Figure S3 displays the TFs/TFBSs in the conserved regions.



## Discussion

### Case study of reconstruction of co-expressed TRNs in *Arabidopsis*

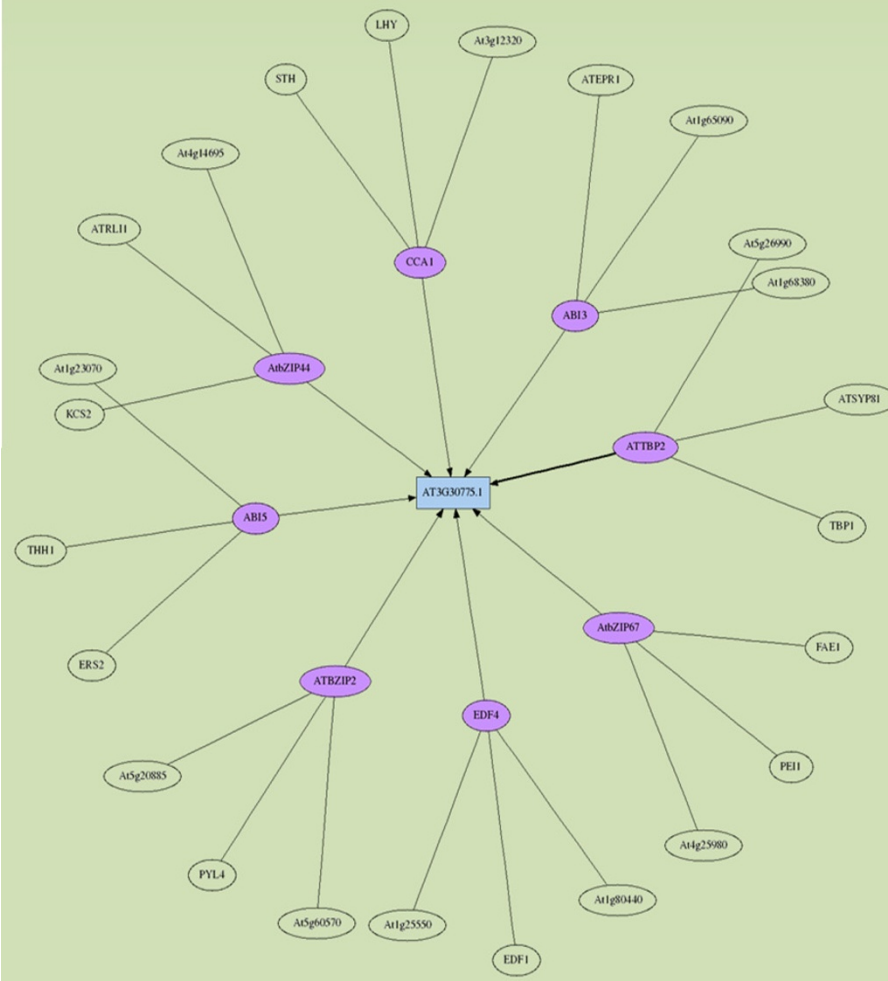
Following the development of DNA microarrays and next generation sequencing (NGS) in experimental

biology, scientists have adopted these technologies to study transcriptome regulation in a genomic wide scale in numerous species. Fukushima et al. thoroughly explored the feasibility of applying high-throughput omics approaches to reconstruct TRNs in plant systems

### Results of co-expression analysis

The following transcription factors co-expressed with the query gene, and the gene regulatory network is constructed according to the co-expression data.

Locus	Symbol	Position	Strand	Score
AT1G55520	ATTBP2;TBP2	20725726	-	0.95
AT2G18160	ATBZIP2;bZIP2;GBF5	7898012	-	0.92
AT1G13260	EDF4;RAV1	4542168	+	0.85
AT3G44460	AtbZIP67;DPBF2	16079976	-	0.85
AT1G75390	AtbZIP44;bZIP44	28291698	+	0.83
AT2G46830	CCA1	19245672	+	0.83
AT2G36270	ABI5;GIA1	15204764	-	0.82
AT3G24650	ABI3;SIS10	8997370	+	0.81

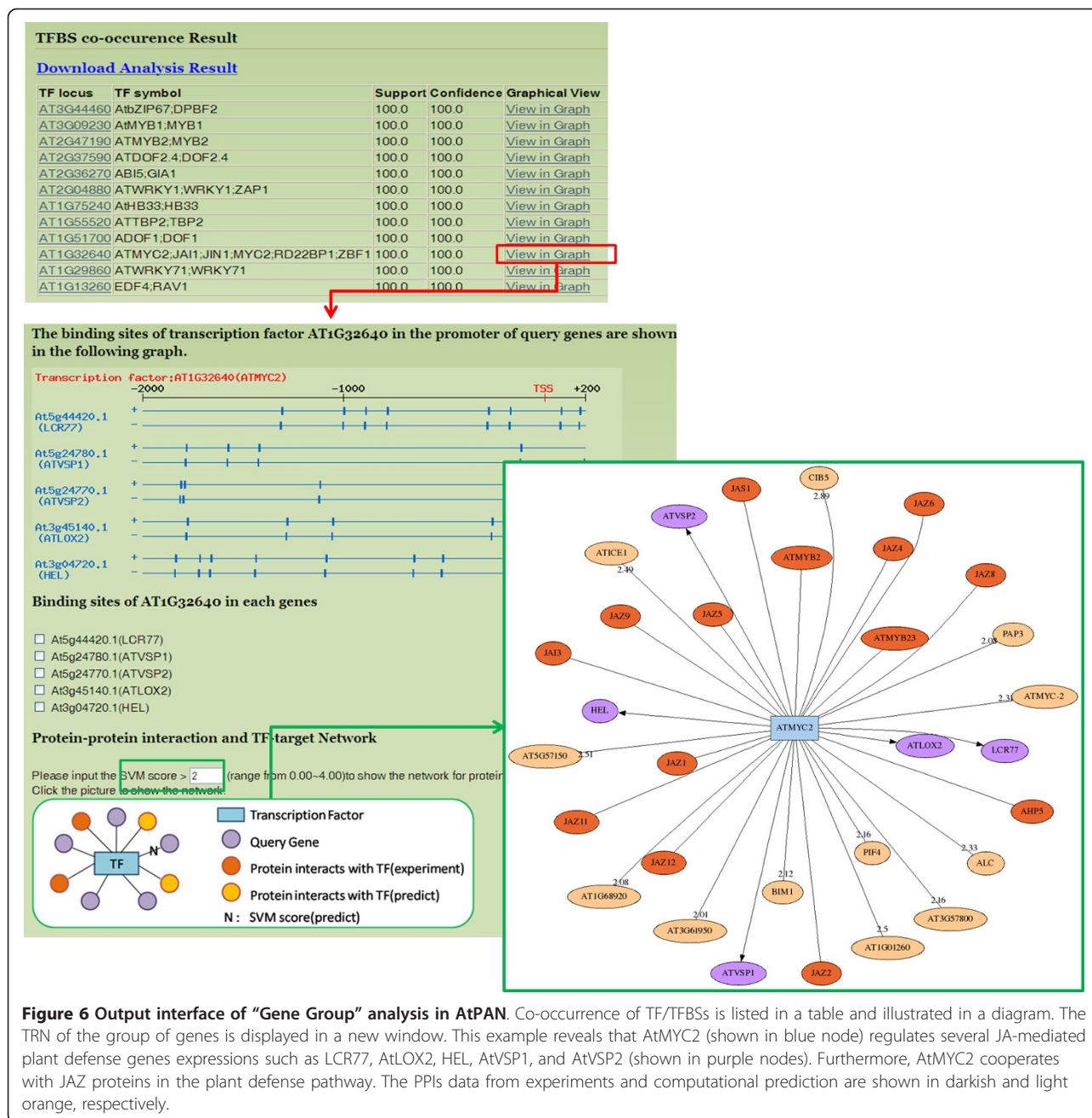


**Figure 5 Illustrative example of co-expressed TRNs in AtPAN.** This figure reveals that indicates AtZIP TFs are involved in ProDH (At3G30775.1) co-expressed TRNs. The purple nodes are TFs, which co-express with the target gene (blue node). The limpid nodes with black line are proteins, which interact with the TFs (purple nodes).

biology [25]. Furthermore, Saito et al. indicated that transcriptome co-expression analysis is critical for studying the functional genomics of plants [26]. Therefore, AtPAN provides an effective platform to reconstruct co-expressed TRNs of *Arabidopsis* genes. This study used Proline Dehydrogenase (ProDH, AT3G30775.1) to

display this efficient system. As is well known, proline accumulation occurs in response to stresses such as dehydration, cold, and salinity [27]. However, this accumulation is reversible, and proline contents return to basal levels when the stress is released [28,29]. ProDH is a major enzyme for proline degradation; ProDH should





be repressed under a stress environment. Although dehydration represses the expression of ProDH, induction occurs during rehydration. A recent work demonstrated that the ACTCAT sequence in ProDH promoter regions is essential to response ProDH induction [27]. Satoh et al. also indicates a subgroup of the basic domain/leucine zipper (bZIP) TFs is involved in ProDH gene activation in *Arabidopsis* [27]. Therefore, whether AtPAN can discover the relationship between bZIP TFs and ProDH gene expression should be determined. As expected, some AtbZIP TFs such as AtbZIP44 and

AtbZIP2 mentioned in Satoh et al. can be identified in co-expressed TRNs (Figure 5). Obviously, several *cis*-acting elements, including ACTCAT (the TFBSs of AtbZIP44 and AtbZIP2), are retrieved by AtPAN (Additional file 1: Figure S4). This figure reveals a TFBS located in -312 bp from TSS, which is in the conserved region between homologous gene promoters and may be important for ProDH gene regulation in prospective works. Additionally, it is known that ABA is required for proline accumulation during a stress response, however, ABI is a negative regulator for proline

accumulation in *Arabidopsis* [30]. Based on results of our analysis, two ABI TFs are identified near the TSS of ProDH (Additional file 1: Figure S4). This finding might suggest that ProDH promoter is not only regulated by bZIP TFs, but also by ABI during stress response. It may give a new direction of an experimental research on ProDH in the future. Accordingly, the analysis results of AtPAN can help to identify the TRNs of *Arabidopsis* genes.

#### Case study of reconstruction of TFs-TGs networks in gene group analysis

As is well known, secondary metabolites play critical roles in plant defense systems such as the Jasmonic acid (JA) signaling pathway during insect herbivores [31,32]. JA responses to insect herbivore damage and triggers many proteins involved in plant defense. First, JA conjugates to an amino acid and binds to SCF<sup>CO11</sup> protein complex. This complex then targets a transcription repressor, JAZ, which blocks MYC2 transcription factor activity. Consequently, the binding leads polyubiquitination of JAZ and subsequently degrades JAZ, while MYC2 can activate plant defensive genes [31,32]. Pauw and Memelink reviewed a situation in which PDF1.2 (also known as LCR77, At5g44420), PR4 (also known as HEL, At3g04720), VSP1 (At5g24780), VSP2 (At5g24770), and LOX2 (At3g45140) are involved in a JA-mediated defense system, and regulated by AtMYC2 transcription factors [33]. In order to evaluate the performance of AtPAN in plant systems biology research, these five gene IDs (i.e. At5g44420.1, At5g24780.1, At5g24770.1, At3g45140.1, and At3g04720.1) are input into the gene group analysis in AtPAN. Following the analysis processes, AtMYC2 transcription factors are retrieved from AtPAN, this analysis result indicates that AtMYC2 is co-occurrence in these five gene promoters (Figure 6). Our results further demonstrate that AtMYC2 bind to JAZ proteins with respect to the results of protein-protein interaction and the TFs-TGs target network (SVM score was set 2.0) (Figure 6). The analysis results are entirely consistent with those reported for plant defense mechanisms in a previous work [33]. Furthermore, both AP2-domain family TFs ORCA2 and ORCA3 are induced by JA and regulate the downstream gene expression in *C. roseus* [34,35]. Lorenzo et al. indicated that *Arabidopsis* ERF1 is an AP2-domain family transcription factor and regulates JA and ethylene response genes, including PDF1.2 (LCR77) and PR4 (HEL) [36]. Additional file 1: Figure S5 displays the same results in TRNs analysis. Moreover, according to previous studies, JA in *C. roseus* induced numerous helix-loop-helix (bHLH) TFs [37]. AtMYC2 is also one of the bHLH TFs in *Arabidopsis*. However, in previous work, no other bHLH TFs were identified in the

JA responsive pathway during the plant defense mechanism, as well as AtMYC. According to our TRNs analysis results (Figure 6), several bHLH TFs such as ATICE1, CIB5, AT5G57150.1, AT1G68920.1, AT3G61950.1, BIM1, AT1G01260.1, AT3G57800.1, and ALC are predicted; most of them are novel and no related plant defense studies have been undertaken. Above results suggest that good candidates are involved in the JA-mediated plant defense system for further experiments. Furthermore, in addition to retrieving TRNs of a group of genes efficiently, the AtPAN system also offers some candidate genes for future research.

#### Conclusions

This work develops a novel database called *Arabidopsis thaliana* Promoter Analysis Net (AtPAN) for analyzing high-confident TFs in a gene promoter and reconstructing co-expressed TRNs of one gene or a group of genes in *Arabidopsis*. Despite the availability of many resources such as PlantPAN, AGRIS, AthaMap, PLACE, and PlantCARE for promoter analysis in plants, those resources do not provide high-confident TFs and co-expressed TRNs of the query genes. Additionally, information of co-expression microarray data and PPIs is first incorporated to conduct promoter analysis in plants. Based on the validation results, AtPAN is effective in constructing the regulation networks in a well-known system as well as the above case study which mentioned JA-mediate plant defense system. Therefore, based on the analysis results, we recommend undertaking wet experiments in the future. A more user-friendly web interface for biologists can be provided with less complex tables and parameters on the web. Importantly, a TFBSs drawing tool is designed for users to select which TFBSs they want to display in their data presentations. Nevertheless, despite its advantage, the proposed AtPAN database has certain limitations. In this version of AtPAN, the reconstruction of co-expressed TRNs is only provided in *Arabidopsis*. Additionally, the TRN is too complex for actual plants. For instance, microRNA is also important in gene regulation and functions as a converse mechanism as TFs do. Owing to that several TFs could be discovered in TRNs of AtPAN analysis results, whether the TFs are negatively regulated by some microRNA should be determined. Therefore, efforts are underway in our laboratory to expand upon the methods used in AtPAN to other plant species such as rice, maize, and *Physcomitrella patens*. Furthermore, the relationship between microRNA and their target genes will be incorporated into AtPAN in the near future.

#### Availability and requirements

The AtPAN will be continuously maintained and updated according to the increasing number of plant

TFs/TFBSs. This novel and creative resource is now freely available at <http://AtPAN.itps.ncku.edu.tw/>.

## Additional material

**Additional file 1: Figure S1.** The concepts of AtPAN. **Figure S2.** Output example of "TFBSs drawing tool" in AtPAN. **Figure S3.** Output example of "Cross Species" analysis in AtPAN. **Figure S4.** TFBSs of AtbZIP2, AtbZIP44, and EDF4 identified in ProDG (At3G30775.1) promoter region. The blue background indicates that the TFBSs are discovered in the conserved region between homologous gene promoters. **Figure S5.** Promoter and TRNs analysis results of PDF1.2 (LCR77) and PR4 (HEL) by AtPAN. **(A)** AtERF1 co-occur in both promoter sequences; in addition, the TFBSs are displayed. **(B)** co-expression TRNs of PR4 genes, both MYC2 and ERF1 are identified in the network.

## Acknowledgements

We thank Yi-Tsung Tang and Hung-Yu Kao for helpful technical assistance with the analysis of transcription factors and their target genes using unsupervised pattern search from literatures. The authors would like to thank the National Science Council of the Republic of China for financially supporting this research under Contract NSC 99-2621-B-006-001-MY2 and NSC 99-2628-B-006-016-MY3. Ted Knoy is appreciated for his editorial assistance.

## Author details

<sup>1</sup>Institute of Tropical Plant Sciences, National Cheng Kung University, Tainan 701, Taiwan. <sup>2</sup>Institute of Bioinformatics and Biosignal Transduction, National Cheng Kung University, Tainan 701, Taiwan.

## Authors' contributions

WCC conceived and supervised this project, and wrote the manuscript. YAC and YCW were responsible for the design, computational analyses, web interface development, and implementation of the database. All authors read and approved the final manuscript.

Received: 17 November 2011 Accepted: 8 March 2012

Published: 8 March 2012

## References

- Lescot M, Dehais P, Thijs G, Marchal K, Moreau Y, Van de Peer Y, Rouze P, Rombauts S: **PlantCARE, a database of plant cis-acting regulatory elements and a portal to tools for in silico analysis of promoter sequences.** *Nucleic Acids Res* 2002, **30**(1):325-327.
- Bulow L, Brill Y, Hehl R: **AthaMap-assisted transcription factor target gene identification in Arabidopsis thaliana.** *Database (Oxford)* 2010, **2010**:baq034.
- Bulow L, Engelmann S, Schindler M, Hehl R: **AthaMap, integrating transcriptional and post-transcriptional data.** *Nucleic Acids Res* 2009, **37**(Database):D983-986.
- Chang WC, Lee TY, Huang HD, Huang HY, Pan RL: **PlantPAN: Plant promoter analysis navigator, for identifying combinatorial cis-regulatory elements with distance constraint in plant gene groups.** *BMC Genomics* 2008, **9**:561.
- Yilmaz A, Mejia-Guerra MK, Kurz K, Liang X, Welch L, Grotewold E: **AGRIS: the Arabidopsis Gene Regulatory Information Server, an update.** *Nucleic Acids Res* 2011, **39**(Database):D1118-1122.
- Ward-Farley D, Donaldson SL, Comes O, Zuberi K, Badrawi R, Chao P, Franz M, Grouios C, Kazi F, Lopes CT, et al: **The GeneMANIA prediction server: biological network integration for gene prioritization and predicting gene function.** *Nucleic Acids Res* 2010, **38**(Web Server):W214-220.
- Obayashi T, Kinoshita K: **Coexpression landscape in ATTED-II: usage of gene list and gene network for various types of pathways.** *J Plant Res* 2010, **123**(3):311-319.
- Vandepoele K, Quimbaya M, Casneuf T, De Veylder L, Van de Peer Y: **Unraveling transcriptional control in Arabidopsis using cis-regulatory elements and coexpression networks.** *Plant Physiol* 2009, **150**(2):535-546.
- Kerrien S, Alam-Faruque Y, Aranda B, Bancarz I, Bridge A, Derow C, Dimmer E, Feuermann M, Friedrichsen A, Huntley R, et al: **IntAct—open source resource for molecular interaction data.** *Nucleic Acids Res* 2007, **35**(Database):D561-565.
- Stark C, Breitkreutz BJ, Chatr-Aryamontri A, Boucher L, Oughtred R, Livstone MS, Nixon J, Van Auken K, Wang X, Shi X, et al: **The BioGRID Interaction Database: 2011 update.** *Nucleic Acids Res* 2011, **39**(Database):D698-704.
- Alfarano C, Andrade CE, Anthony K, Bahros N, Bajec M, Bantoff K, Betel D, Bobechko B, Boutilier K, Burgess E, et al: **The Biomolecular Interaction Network Database and related tools 2005 update.** *Nucleic Acids Res* 2005, **33**(Database):D418-424.
- Lin M, Shen X, Chen X: **PAIR: the predicted Arabidopsis interactome resource.** *Nucleic Acids Res* 2011, **39**(Database):D1134-1140.
- Su N, Wang Y, Qian M, Deng M: **Combinatorial regulation of transcription factors and microRNAs.** *BMC Syst Biol* 2010, **4**:150.
- Swarbreck D, Wilks C, Lamesch P, Berardini TZ, Garcia-Hernandez M, Foerster H, Li D, Meyer T, Muller R, Ploetz L, et al: **The Arabidopsis Information Resource (TAIR): gene structure and function annotation.** *Nucleic Acids Res* 2008, **36**(Database):D1009-1014.
- Yamamoto YY, Obokata J: **ppdb: a plant promoter database.** *Nucleic Acids Res* 2008, **36**(Database):D977-981.
- Maglott D, Ostell J, Pruitt KD, Tatusova T: **Entrez Gene: gene-centered information at NCBI.** *Nucleic Acids Res* 2011, **39**(Database):D52-57.
- Kanehisa M, Goto S, Kawashima S, Okuno Y, Hattori M: **The KEGG resource for deciphering the genome.** *Nucleic Acids Res* 2004, **32**(Database):D277-280.
- Higo K, Ugawa Y, Iwamoto M, Korenaga T: **Plant cis-acting regulatory DNA elements (PLACE) database: 1999.** *Nucleic Acids Res* 1999, **27**(1):297-300.
- Matys V, Kel-Margoulis OV, Fricke E, Liebich I, Land S, Barre-Dirrie A, Reuter I, Chekmenev D, Krull M, Hornischer K, et al: **TRANSFAC and its module TRANSCOMP: transcriptional gene regulation in eukaryotes.** *Nucleic Acids Res* 2006, **34**(Database):D108-110.
- Bryne JC, Valen E, Tang MH, Marstrand T, Winther O, da Piedade I, Krogh A, Lenhard B, Sandelin A: **JASPAR, the open access database of transcription factor-binding profiles: new content and tools in the 2008 update.** *Nucleic Acids Res* 2008, **36**(Database):D102-106.
- Obayashi T, Nishida K, Kasahara K, Kinoshita K: **ATTED-II updates: condition-specific gene coexpression to extend coexpression analyses and applications to a broad range of flowering plants.** *Plant Cell Physiol* 2011, **52**(2):213-219.
- Tatusova TA, Madden TL: **BLAST 2 Sequences, a new tool for comparing protein and nucleotide sequences.** *FEMS Microbiol Lett* 1999, **174**(2):247-250.
- Tang YT, Li SJ, Kao HY, Tsai SJ, Wang HC: **Using unsupervised patterns to extract gene regulation relationships for network construction.** *Plos One* 2011, **6**(5):e19633.
- Huang HD, Horng JT, Chang CH, Tsou TS, Hong JY, Liu BJ: **A computational approach to discover differential cooperation of regulatory sites in functionally related genes in yeast genome.** *J Inf Sci Eng* 2004, **20**(6):1141-1159.
- Fukushima A, Kusano M, Redestig H, Arita M, Saito K: **Integrated omics approaches in plant systems biology.** *Curr Opin Chem Biol* 2009, **13**(5-6):532-538.
- Saito K, Hirai MY, Yonekura-Sakakibara K: **Decoding genes with coexpression networks and metabolomics—majority report by precogs.** *Trends Plant Sci* 2008, **13**(1):36-43.
- Sato R, Fujita Y, Nakashima K, Shinozaki K, Yamaguchi-Shinozaki K: **A novel subgroup of bZIP proteins functions as transcriptional activators in hypoosmolarity-responsive expression of the ProDH gene in Arabidopsis.** *Plant Cell Physiol* 2004, **45**(3):309-317.
- Sharma S, Verslues PE: **Mechanisms independent of abscisic acid (ABA) or proline feedback have a predominant role in transcriptional regulation of proline metabolism during low water potential and stress recovery.** *Plant Cell Environ* 2010, **33**(11):1838-1851.
- Deuschle K, Funck D, Forlani G, Stransky H, Biehl A, Leister D, van der Graaff E, Kunze R, Frommer WB: **The role of [Delta]1-pyrroline-5-**

- carboxylate dehydrogenase in proline degradation. *Plant Cell* 2004, **16**(12):3413-3425.
30. Verslues PE, Bray EA: Role of abscisic acid (ABA) and *Arabidopsis thaliana* ABA-insensitive loci in low water potential-induced ABA and proline accumulation. *J Exp Bot* 2006, **57**(1):201-212.
  31. Chini A, Fonseca S, Fernandez G, Adie B, Chico JM, Lorenzo O, Garcia-Casado G, Lopez-Vidriero I, Lozano FM, Ponce MR, *et al*: The JAZ family of repressors is the missing link in jasmonate signalling. *Nature* 2007, **448**(7154):666-671.
  32. Thines B, Katsir L, Melotto M, Niu Y, Mandaokar A, Liu G, Nomura K, He SY, Howe GA, Browse J: JAZ repressor proteins are targets of the SCF(CO1) complex during jasmonate signalling. *Nature* 2007, **448**(7154):661-665.
  33. Pauw B, Memelink J: Jasmonate-responsive gene expression. *J Plant Growth Regul* 2004, **23**(3):200-210.
  34. Menke FL, Champion A, Kijne JW, Memelink J: A novel jasmonate- and elicitor-responsive element in the periwinkle secondary metabolite biosynthetic gene *Str* interacts with a jasmonate- and elicitor-inducible AP2-domain transcription factor, ORCA2. *EMBO J* 1999, **18**(16):4455-4463.
  35. van der Fits L, Memelink J: The jasmonate-inducible AP2/ERF-domain transcription factor ORCA3 activates gene expression via interaction with a jasmonate-responsive promoter element. *Plant J* 2001, **25**(1):43-53.
  36. Lorenzo O, Piqueras R, Sanchez-Serrano JJ, Solano R: ETHYLENE RESPONSE FACTOR1 integrates signals from ethylene and jasmonate pathways in plant defense. *Plant Cell* 2003, **15**(1):165-178.
  37. Chatel G, Montiel G, Pre M, Memelink J, Thiersault M, Saint-Pierre B, Doireau P, Gantet P: CrMYC1, a *Catharanthus roseus* elicitor- and jasmonate-responsive bHLH transcription factor that binds the G-box element of the strictosidine synthase gene promoter. *J Exp Bot* 2003, **54**(392):2587-2588.

doi:10.1186/1471-2164-13-85

**Cite this article as:** Chen *et al*: AtPAN: an integrated system for reconstructing transcriptional regulatory networks in *Arabidopsis thaliana*. *BMC Genomics* 2012 **13**:85.

**Submit your next manuscript to BioMed Central  
and take full advantage of:**

- Convenient online submission
- Thorough peer review
- No space constraints or color figure charges
- Immediate publication on acceptance
- Inclusion in PubMed, CAS, Scopus and Google Scholar
- Research which is freely available for redistribution

Submit your manuscript at  
[www.biomedcentral.com/submit](http://www.biomedcentral.com/submit)

