

CORRECTION

Open Access



Correction: Whole-genome characterization of *Rosa chinensis* AP2/ERF transcription factors and analysis of negative regulator *RcDREB2B* in Arabidopsis

Wei Li^{1†}, Ziwen Geng^{1†}, Cuiping Zhang¹, Kuiling Wang¹ and Xinqiang Jiang^{1*}

Correction: *BMC Genomics* 22, 90 (2021). <https://doi.org/10.1186/s12864-021-07396-6>

Following publication of the original article it was reported that there was an error in Fig. 7. The same photo was used for OE#16 under 1.2 μ M ABA and VC under 1.6 μ M ABA.

The correct Fig. 7 is given in this Correction article.

[†]Wei Li and Ziwen Geng contributed equally to this work.

The online version of the original article can be found at <https://doi.org/10.1186/s12864-021-07396-6>.

*Correspondence:

Xinqiang Jiang
jiangxinqiang8@163.com

¹College of Landscape Architecture and Forestry, Qingdao Agricultural University, Qingdao 266000, China



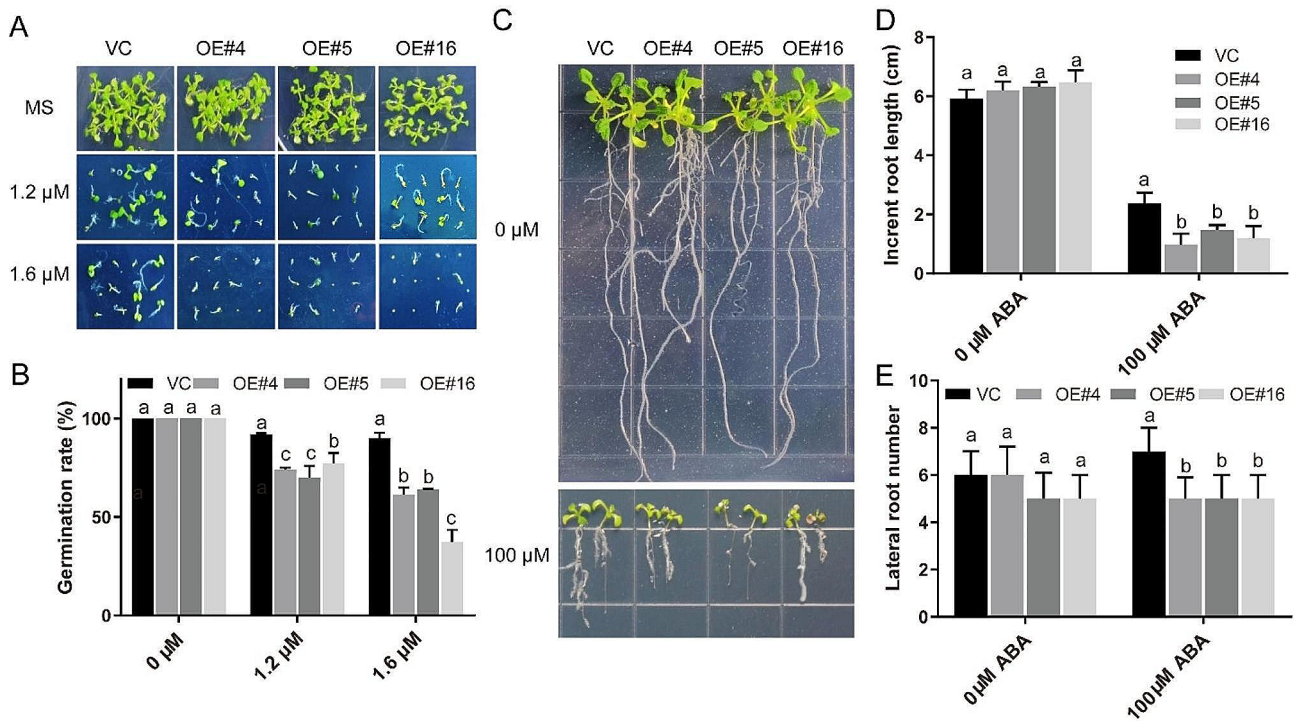


Fig. 7 Germination and root growth analysis of VC and *RcDREB2B* overexpressed lines in response to ABA. **a** Seed germination performance of VC and *RcDREB2B* overexpressed lines on MS with different ABA concentrations (0, 1.2 μM, 1.6 μM) after 9 days. **b** Statistical analyses of germination rates are indicated in (a). Seed germination rates were measured after 9 d growth. **c** Root growth of VC and transgenic seedlings on MS agar plates containing 0 μM or 100 μM ABA. Representative photos were taken following 10 days of the transfer. Seedlings were 6-days-old at the time of transfer. Increment in root length (d), and lateral root number (e) of VC and *RcDREB2B* transgenic plants in response to ABA. Different letters indicate significant differences in three independent experiments at $P < 0.05$ using one-way ANOVA analysis

Published online: 01 July 2024

Publisher’s Note

Springer Nature remains neutral with regard to jurisdictional claims in published maps and institutional affiliations.