

Research article

Open Access

An original *SERPINA3* gene cluster: Elucidation of genomic organization and gene expression in the *Bos taurus* 21q24 region

Patrick Pelissier¹, Didier Delourme¹, Agnes Germot¹, Xavier Blanchet¹, Samira Becila², Abderrahman Maftah¹, Hubert Leveziel¹, Ahmed Ouali² and Laure Bremaud*¹

Address: ¹INRA, UMR 1061 Unité de Génétique Moléculaire Animale, Université de Limoges, IFR 145, Faculté des Sciences et Techniques, 87060 Limoges, France and ²QuaPA, BPM, INRA de Clermont Ferrand-Theix, 63122 Saint Genes Champanelle, France

Email: Patrick Pelissier - patrick.pelissier@unilim.fr; Didier Delourme - didier.delourme@unilim.fr; Agnes Germot - agnes.germot@unilim.fr; Xavier Blanchet - xavier.blanchet@etu.unilim.fr; Samira Becila - becila2002@yahoo.fr; Abderrahman Maftah - maftah@unilim.fr; Hubert Leveziel - leveziel@unilim.fr; Ahmed Ouali - ouali@clermont.inra.fr; Laure Bremaud* - laure.bremaud@unilim.fr

* Corresponding author

Published: 2 April 2008

Received: 4 December 2007

BMC Genomics 2008, 9:151 doi:10.1186/1471-2164-9-151

Accepted: 2 April 2008

This article is available from: <http://www.biomedcentral.com/1471-2164/9/151>

© 2008 Pelissier et al; licensee BioMed Central Ltd.

This is an Open Access article distributed under the terms of the Creative Commons Attribution License (<http://creativecommons.org/licenses/by/2.0>), which permits unrestricted use, distribution, and reproduction in any medium, provided the original work is properly cited.

Abstract

Background: The superfamily of *serine proteinase inhibitors* (serpins) is involved in numerous fundamental biological processes as inflammation, blood coagulation and apoptosis. Our interest is focused on the *SERPINA3* sub-family. The major human plasma protease inhibitor, α 1-antichymotrypsin, encoded by the *SERPINA3* gene, is homologous to genes organized in clusters in several mammalian species. However, although there is a similar genic organization with a high degree of sequence conservation, the reactive-centre-loop domains, which are responsible for the protease specificity, show significant divergences.

Results: We provide additional information by analyzing the situation of *SERPINA3* in the bovine genome. A cluster of eight genes and one pseudogene sharing a high degree of identity and the same structural organization was characterized. Bovine *SERPINA3* genes were localized by radiation hybrid mapping on 21q24 and only spanned over 235 Kilobases. For all these genes, we propose a new nomenclature from *SERPINA3-1* to *SERPINA3-8*. They share approximately 70% of identity with the human *SERPINA3* homologue. In the cluster, we described an original sub-group of six members with an unexpected high degree of conservation for the reactive-centre-loop domain, suggesting a similar peptidase inhibitory pattern. Preliminary expression analyses of these bovine *SERPINA3*s showed different tissue-specific patterns and diverse states of glycosylation and phosphorylation. Finally, in the context of phylogenetic analyses, we improved our knowledge on mammalian *SERPINA*s evolution.

Conclusion: Our experimental results update data of the bovine genome sequencing, substantially increase the bovine *SERPINA3* sub-family and enrich the phylogenetic tree of serpins. We provide new opportunities for future investigations to approach the biological functions of this unusual subset of serine proteinase inhibitors.

Background

Serine peptidase inhibitors represent a constantly expanding group of structurally related proteins. Amongst them, the most important family is undoubtedly the serpins, an acronym for *serine* *pro*teinase *in*hibitors [1] which describes the functional properties of the superfamily. The name serpin was originally coined in recognition of the fact that most serpins are inhibitors of serine proteinases. However, it is now clearly inappropriate because few members of this superfamily lacked any proteinase inhibitory properties [2,3]. Approximately 500 serpins have been identified to date and can be found in all superkingdoms including animals, plants, bacteria as well as some viruses [4,5]. Both extracellular and intracellular serpins have been identified [6]. Most of them are glycoproteins (MW 40,000–60,000) composed of a single polypeptide chain and variable number of oligosaccharide moieties [7]. The protein structure of serpins is characterized by 3 β -sheets and 8 or 9 α -helices [8]. Serpins present a conserved domain, the reactive-centre-loop domain (RCL) which connects β -sheets A and C and often acts as "bait" for the target serine protease [9]. Phylogenetic relationships between orthologous and paralogous serpins have been studied. Irving *et al.* [4] compared several hundred serpin proteins and proposed an arbitrary classification into eight major and eight minor sub-families from A (antitrypsin-like) to P (plants), based on clade recognitions and supports. In vertebrates, serpins are involved in many extracellular processes dependent on serine proteinases such as blood coagulation, fibrinolysis, cell migration, complement activation and inflammation [10,9]. Serpin dysfunction can have pathological consequences and contributes to diseases such as thrombosis, cancer [11] and serpinopathies including cirrhosis and emphysema [12]. Serpins are subdivided into the nine first groups A to I. The two largest groups so far, in all of the serpins, are the antitrypsin-like and the ovalbumin-like serpins which are designated "SERPINA" and "SERPINB" respectively and composed of 13 functional members each. In the "SERPINA" clade, some of them are involved in a diversity of biological functions. For example, human SERPINA3 (α_1 -antichymotrypsin) is found and identified as a major component of the fibrillary amyloid plaques of brains from patients with Alzheimer's disease, one of the most common forms of dementia [13,14].

According to the structure of their respective genes (number of introns and exons and relative position at genomic level), the vertebrate serpin superfamily was subdivided into at least six groups [15]. Most known serpin genes, including the α_1 -antichymotrypsin which belongs to group 2, contain a non-coding first exon and a partly non-coding last exon.

Clustering of serpin genes occurs in the genome of human and other species. They present similarities in gene structure: the *SERPINA* genes characteristically consist of four exons with identical positioning and phasing of the intron-exon boundaries. *SERPINA1* (α_1 -antitrypsin), *SERPINA3* (α_1 -antichymotrypsin), *SERPINA5* (PCI, protein C inhibitor), *SERPINA9* (centerin), *SERPINA10* (ZPI, protein Z-dependent protease inhibitor) as well as *SERPINA11* are mapped together in the same cluster on human chromosome 14q32 [16]. More recently, the gene encoding the *SERPINA4* (kallistatin precursor) was also mapped within this cluster. This close proximity in the same cluster suggests that these genes might have arisen by tandem duplications from a common gene ancestor [16,17]. However, in spite of their close physical proximity, the corresponding proteins have disparate functions, raising interesting questions about the evolution of gene function and expression. For example, the *SERPINA9* is likely to function *in vivo* in the germinal centre B-cells [18]; the *SERPINA5*, in addition to its activities within the blood clotting and fibrinolytic cascades, seems to participate in several biological processes including reproduction and tumor growth [19] and *SERPINA10* produces a rapid inhibition of the coagulation factor Xa in the presence of protein Z (PZ), procoagulant phospholipids and Ca^{2+} [20]. An approximate protein similarity of 40–45% between the human *SERPINA*s [21] could explain these diverse physiological functions.

In mouse, the genomic organization of the serpin family shows significant differences. The cluster of genes corresponding to human chromosome 14q32 is mapped on the chromosome 12F1 [22]. Both α_1 -protease inhibitor and contrapsin genes had undergone considerable expansion in this genome. The mouse α_1 -protease inhibitor (α_1 -antitrypsin – *SERPINA1*) cluster comprises 5 members. The multigenic cluster corresponding to contrapsin (α_1 -antichymotrypsin – *SERPINA3*) is termed the *Spi-2* locus [23] and, until recently, was thought to encompass 14 members [24] with a degree of overall sequence similarity of 65 to 80%, despite markedly divergent RCL domains. Some of these genes present a significant degree of sequence homology with the single-copy human *SERPINA3* gene [25]. However, the RCL was substantially different. In mouse genome, these two clusters represent the result of multiple gene duplication events.

In the pig, four serine protease inhibitors were detected at the protein level: PI1 (*SERPINA1*), PI2 (*SERPINA3-1*), PI3 and PI4 (*SERPINA3* paralogues) [26–28]. PI1 and PI2 corresponding genes were mapped by radioactive *in situ* hybridization (RISH) to the distal end of chromosome 7q23–26 [29,30]. A complete cDNA, named *SERPINA3-1*, corresponding to PI2 and a gene, named *SERPINA3-2*, were sequenced [31] and clearly affiliated to the porcine

α_1 -antichymotrypsin (SERPINA3) family. Porcine PI2 and SERPINA3-2 only showed 76% amino acid identity, with the largest difference near the C-terminus containing the deduced reactive site P1-P'1.

The knowledge on bovine serpin genes is much more restricted. Hwang *et al.* [32] identified a serpin, previously named Endopin1, at the cDNA level, in bovine endocrine chromaffin cells. The same serpin was then purified from bovine skeletal muscle [33]. This serpin (mEndopin1A) was found to be essentially intracellular and widely distributed in bovine tissues suggesting that this protein might have central biological role in a large set of tissues [34]. More recently, a second endopin, named mEndopin1B, was purified from bovine diaphragm and the genes encoding mEndopin1A and mEndopin1B were characterized [35].

In order to clarify the complexity surrounding the bovine SERPINA3 genes, we describe here the isolation, the complete sequence and the genomic organization of the bovine α_1 -antichymotrypsin (SERPINA3) multigenic cluster. This cluster was assigned to chromosome 21 using a radiation hybrid panel. In addition, we provide preliminary expression data on the bovine SERPINA3 genes. Characterization of these new genes and phylogenetic analysis of the corresponding proteins provide new insights on the evolution of SERPINA3 gene cluster. We also propose a nomenclature to designate all the members of this clade.

Results

Southern blot analyses of SERPINA3 genes

Genomic DNA extracted from bovine blood cells was digested to completion with *NciI*, *NcoI* and *SacI* endonucleases. After transfer on a Hybond-N⁺ membrane, DNA was hybridized with a radiolabelled probe corresponding to a part of exon 2 of mEndopin 1A gene [GenBank: [AY911536](#)]. After washing under high stringency conditions, several fragments of variable intensity were detected for each endonuclease digest as showed in Figure 1A. A minimum of four hybridizing bands was observed for each DNA digestion. In particular, five bands with variable intensity were obtained using *SacI*. Several fragments were also observed with an additional experiment performed on isolated BAC DNA (see below) treated in the same conditions (Figure 1B). These Southern blot patterns are consistent with the existence of more than the two genes *mEndopin1A* and *mEndopin1B* previously described [35]. It suggests a complex organization in the bovine genome with more than a round of duplication during evolution from one ancestral SERPINA3 gene.

Molecular cloning of bovine SERPINA3 genes

A bovine genomic BAC library was screened by PCR with the set of primers described in Methods section. Four positive BAC clones, named bI0123B08, bI0511D06, bI0311E07 and bI0382C01, were identified. Only bI0123B08 and bI0511D06 BAC DNAs were then subjected to long-range PCR with two sets of primers (see methods).

After cloning of the PCR products, several positive clones with inserts ranging from 7.0 to 8.0 Kb were identified with a first set of primers corresponding to the 5' and 3' ends of the *mEndopin1A* cDNA sequence. Restriction mapping using different endonucleases revealed six different profiles. Two of them were first analyzed and assigned to mEndopin1A and mEndopin1B proteins, which were already found and purified from bovine skeletal muscle [35]. In our new proposal of nomenclature, the corresponding genes are named SERPINA3-1 [GenBank: [AY911536](#)] and SERPINA3-3 [GenBank: [AY911537](#)], respectively. The four other fragments were also analyzed, sequenced on both strands using several sense and anti-sense primers as previously described [35] and assigned to four new genes: SERPINA3-2 [GenBank: [EF153626](#)], SERPINA3-4 [GenBank: [EF153627](#)], SERPINA3-5 [GenBank: [EF153628](#)] and SERPINA3-6 [GenBank: [EF153629](#)].

Three clones with different restriction profiles were obtained with a second set of primers corresponding to the 5' end of the SERPINA3 EST [GenBank: [DT861683](#)] and the 3' end of the *endopin2B* cDNA sequence [GenBank: [AY386699](#)] published by Hwang and collaborators [36]. The clones were sequenced on both strands and assigned to SERPINA3-7 [GenBank: [EF153630](#)], SERPINA3-8 [GenBank: [EF153631](#)] and SERPINA3P [GenBank: [EF153625](#)]. Comparison of these genomic DNA sequences, using the online software Spidey [37], with the SERPINA3-1 cDNA allowed us to deduce the gene structures. Sizes of exons and introns, as well as exon/intron junctions, were determined. Genes are split into five exons (exon 1 to exon 5) and four introns (intron 1 to intron 4), as presented in Figure 2A. Figure 2B shows the sizes of exons and introns for the first eight bovine SERPINA3 genes. These genes have a good conservation of the introns and exons size, except for the intron 2 of SERPINA3-1 and SERPINA3-2, which is due to the insertion of a Bov-B LINE. Finally, for all these genes, the translation initiation codon ATG is located in exon 2, few base pairs downstream intron 1/exon 2 boundary and the stop codon TAG is found in exon 5. Due to the conserved gene organization of class 2 serpins (five exons and four introns), a potential pseudogene (SERPINA3P) was also identified. Compared to the other SERPINA3 cDNAs, SERPINA3P gene is partially truncated at the end of the

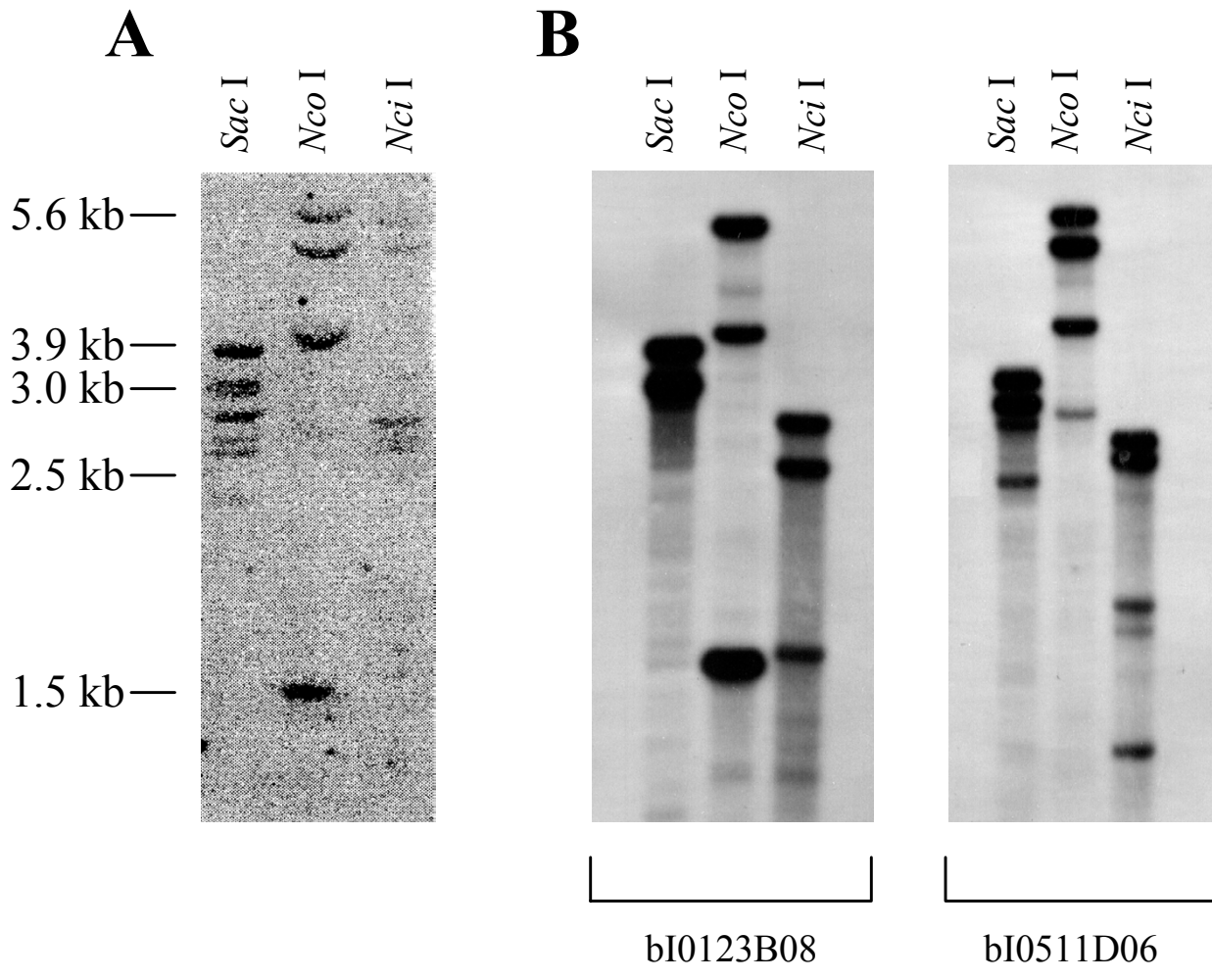


Figure 1
Southern blot analyses of bovine *SERPINA3* organization. (A) Southern blot analysis of bovine genomic DNA digested with three different restriction enzymes *Nco*I, *Nci*I and *Sac*I. (B) Southern blot analysis of DNA from two overlapping BAC clones bI0123B08 and bI0511D06 digested with the same restriction endonucleases.

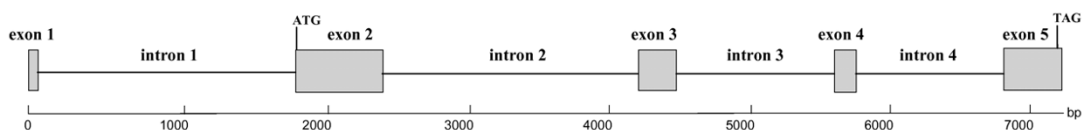
exon 3 and the beginning of the exon 4. In addition a 13 bp deletion in exon 2 induces a frame shift which generates a premature stop codon TGA at position 2289 in exon 2. Figure 2B indicates also the size of isolated mRNAs for *SERPINA3-1* and *SERPINA3-3*, and of deduced mRNAs for *SERPINA3-2*, *SERPINA3-4*, *SERPINA3-5*, *SERPINA3-6*, *SERPINA3-7* and *SERPINA3-8*.

Localization and genomic organization of bovine *SERPINA3* genes

SERPINA3 genes localization within the bovine genome was performed using a radiation hybrid (RH) panel. The Roslin 3000-rad RH panel [38] was screened by PCR using primers able to amplify a specific DNA fragment of 477 bp in exon 2. Results revealed a single localization on bovine

chromosome 21 between *ILSTS054* (635 cR) and *IDVGA39* (658 cR) markers. The use of a first generation bovine BAC-based physical map [39] showed that the four BAC clones previously isolated were contained in the single BAC contig 2018 [40] and covered approximately 235 Kb (Figure 3). Using the publicly available 6× bovine genomic sequence assembly (Btau_2.0) [41], we confirmed the RH localization and assigned the bovine *SERPINA3* genes to the region 21q24. Comparisons of DNA sequences allocate some of our sequenced genes to predicted genes in Btau_2.0, like *SERPINA3-1* to *SERPINA3*, *SERPINA3-3* to LOC615103, *SERPINA3-5* to LOC617667, *SERPINA3-7* to LOC497203, *SERPINA3-8* to LOC505820 and *SERPINA3P* to LOC526738. The genomic organization of the nine bovine *SERPINA3* genes

A



B

	Genbank Acc. Num.	Gene (bp)	mRNA (b)	Exons (bp)					Introns (bp)			
				1	2	3	4	5	1	2	3	4
<i>SERPINA3-1</i>	AY911536	7933	1504	43	627	271	148	415	1828	2409*	1133	1059
<i>SERPINA3-2</i>	EF153626	7834	≥1404	≥18	627	271	148	≥340	1830	2407*	1133	1060
<i>SERPINA3-3</i>	AY911537	7387	1509	41	627	271	148	415	1856	1834	1136	1059
<i>SERPINA3-4</i>	EF153627	7143	≥1261	≥23	627	271	148	≥192	1853	1834	1136	1059
<i>SERPINA3-5</i>	EF153628	7153	≥1256	≥18	627	271	148	≥192	1868	1835	1135	1059
<i>SERPINA3-6</i>	EF153629	7091	≥1265	≥18	636	271	148	≥192	1793	1835	1136	1062
<i>SERPINA3-7</i>	EF153630	7812	≥1281	≥25	636	271	151	≥198	1793	1629	2078	1031
<i>SERPINA3-8</i>	EF153631	9210	≥1522	≥40	636	274	151	≥421	1863	1843	2923	1059

Figure 2

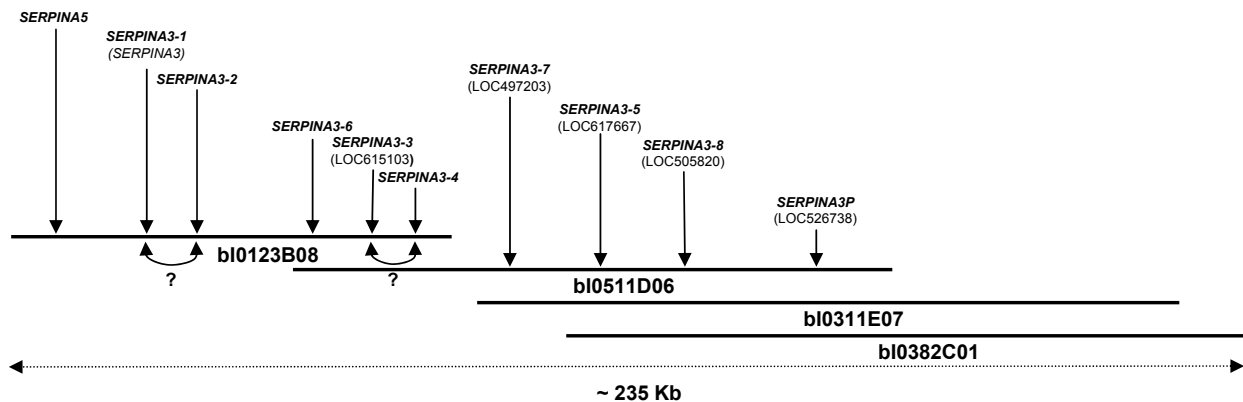
Genomic organization of bovine SERPINA3 genes. (A) General and schematic representation of *SERPINA3* genes. Exons numbered from exon 1 to exon 5 are indicated by gray boxes, and intron sequences intron 1 to intron 4 by a thin line. **(B)** The Genbank accession numbers, the size in bases of each gene, mRNAs, exons and introns are listed in the table. The horizontal line in bold type separates the sub-group of the two other genes. The asterisk in intron 2 of *SERPINA3-1* and *SERPINA3-2* genes indicates the presence of the Bov-B LINE sequence.

was deduced from these results and the BAC Southern blot analysis (Figure 3). Allocated genes are localized on two distinct sequence contigs in bovine build 2.0 genome (NW_930022 and NW_930023) and covered up to 1.5 Mb. The relative positions of *SERPINA3-1/SERPINA3-2* and *SERPINA3-3/SERPINA3-4* were not yet elucidated. Moreover, we only succeeded in localizing the *SERPINA5* gene upstream *SERPINA3-1* in bI0123B08 BAC clone using the MARC_10319-10320 STS [UniSTS: 267110].

Analysis of deduced SERPINA3 protein sequences

The deduced amino-acid primary sequences of these eight bovine *SERPINA3* genes indicated that protein sizes range from 411 to 418 amino acids. Different numbers of potential N-glycosylation sites (N-X-S/T with X neither P)

were present (Figure 4). The bovSERPINs A3-1/A3-2/A3-3/A3-4 and A3-5 have very similar sequences with 95% of identity and separate from bovSERPINA3-7 and A3-8, only sharing 74% of identity with them. Based on protein alignment, a sub-group of bovSERPINA3 could be distinguished. It is composed of bovSERPINA3-1, bovSERPINA3-2, bovSERPINA3-3, bovSERPINA3-4 and bovSERPINA3-5. The membership of the bovSERPINA3-6 is much more ambiguous. As seen in Figure 4, this protein shares more resemblance with that sub-group in its C-terminal part, but its N-terminal part is closer to bovSERPINA3-7 and bovSERPINA3-8.

**Figure 3**

Structure of the *SERPINA3* locus on *Bos taurus* chromosome 21. The genes are labelled according to the classification in Figure 2B. Their names are indicated in bold characters and the names of loci established for Btau-2.0 genomic sequence assembly are added (when known) below between brackets. The different genes are localized on the four overlapping BAC clones covering approximately 235 Kb. The two question marks indicate the uncertainties of relative location for the genes *SERPINA3-1/SERPINA3-2* and *SERPINA3-3/SERPINA3-4*, respectively. The *SERPINA5* gene is also shown.

Preliminary RT-PCR analysis of bovine *SERPINA3* genes

RT-PCR was used to determine the presence of *SERPINA3* mRNAs in bovine skeletal muscles (*semitendinosus* and *diaphragma*) and also in liver and kidney. Because of the high homology between the eight *SERPINA3* genes only three primer pairs were used (see methods).

RT-PCR, with the primer set *SERPINA3-1/F*, *SERPINA3-1/R*, amplified 319 bp fragments in all tested tissues (data not shown). Two different sequences were obtained. The first sequence is present in all tested tissues and would correspond to *SERPINA3-1* and/or *SERPINA3-2* transcripts, which could not be discriminated by this portion of sequence. The second sequence is only present in the liver. It would correspond to *SERPINA3-3*, *SERPINA3-4* and/or *SERPINA3-6* transcripts, which could not be discriminated by this portion of sequence.

Primers *SERPINA3-6/F*, *SERPINA3-6/R* and primers *SERPINA3-5/F*, *SERPINA3-5/R* allowed to amplify a DNA fragment only in the liver. Surprisingly, with the primer pair *SERPINA3-6/F*, *SERPINA3-6/R*, after sub-cloning, amplifying and sequencing, a single sequence corresponding to the *SERPINA3-7* mRNA was obtained. This RT-PCR was supposed to generate a specific amplification of *SERPINA3-6* transcript. However, if *SERPINA3-6* cDNA is one of the minor isoforms of bovine *SERPINA3* in liver, it may not be detected by RT-PCR. With the primers *SERPINA3-5/F* and *SERPINA3-5/R*, several sequences were obtained. They are related to *SERPINA3-3*, *SERPINA3-4* and *SERPINA3-5* cDNAs but are different from the other cDNAs of the *SERPINA3* family.

Proteomic analysis of muscular bovine *SERPINA3*

According to the Western blot carried out after 2D-gel electrophoresis of the Sephadex G100 F1 fraction (Figure 5), the antibody revealed series of spots with at least three different molecular weights and ranging from 70 to 80 kDa. The calculated relative mass (M_r) of the eight deduced proteins is 46 kDa. The difference of electrophoretic profile could be explained by different levels of glycosylation. Each initial spot with different M_r spreads out on the pH gradient indicating a large variation in the extent of phosphorylations of different isoforms. Their pI values vary from 6 to 4.5. For each M_r , the spots probably correspond to a set of bovine *SERPINA3* isoforms which are not resolved in the present conditions. For information, the position of the two purified isoforms including bovine *SERPINA3-1* (70 kDa) and bovine *SERPINA3-3* (75 kDa) are indicated in Figure 5. The present results clearly demonstrate that a relatively large set of bovine *SERPINA3* are expressed in skeletal muscle.

Phylogenetic analyses of *SERPINA3*

Analyses were performed on the deduced amino acid sequences. Bovine *SERPINA3* phylogeny based on maximum likelihood (Figure 6A) illustrates a complex situation among this sub-family. Three pairs of sequences (*A3-1/A3-2*, *A3-3/A3-4* and *A3-7/endopin2B*) are recognized with high bootstrap proportions (BPs), ranging from 84% to 100%. They would be the result of very recent gene duplications in the *Bos taurus* genome, which would be supported by their proximity on the chromosome 21. A dichotomy is seen, which separates the endo1 group (named according to endopin1) including bovine *SERPINA3-*

	10	20	30	40	50	60	70	
A3-1	MRAERTSFL	ALGLLVAGIR	S-VHCLPEN	VVKDQHRR--	VDGHTLASSN	TDFAFSLYKQ	LALKNPKNV	67
A3-2	67
A3-3L.P.R.....	67
A3-4L.P.R.....D.....	67
A3-5M.....R.....S.....T.....	67
A3-6	..T..V.P.	..I...LC	..R.....	TPEE..KVTS	..S.....D.....	70
A3-7	..T.....	..S.FC	..R.....	TPEE..KGTS	..S.....D.....	70
A3-8M.P.S.LC	..R.....	APEER.KGTS	..S.....	70
	80	90	100	110	120	130	140	
A3-1	ILSPLSVSIA	LAFLSLGARG	STLTEILEGL	KFNLTETIQEK	EIHHSFQHLL	QALNQPSNQL	QLSVGNAMFV	137
A3-2	137
A3-3	MF.....M.P.T	Q..QG.....R.R.	137
A3-4	MF.....M.P.P.....	T Q..QG.....R.R.	137
A3-5	MF.....M.P.T	Q..QG.....R.R.	137
A3-6	..F.....	..H..P.VTP.T	..Q.G.....	..TF.....I..	140
A3-7	..F.....I	..HD H.VTP.T	..Q.G.....	..TF.....	140
A3-8	..F.....I	..P.VTP.R	..Q.G.....	..M.SR...E.T...	140
	150	160	170	180	190	200	210	
A3-1	QEELKLLDKF	IEDAQVLYSS	EAFPTNFRDS	EAARSLINDY	VKNKTQGKIE	ELFKYLSPR	ELVLVNYIYF	207
A3-2	207
A3-3R.....PK.....D.....V..	207
A3-4R.....PK.....D.....V..	207
A3-5R.....V.....	207
A3-6R.....PK.....D.....V..	210
A3-7	S.....	RK.EAF.A	VLS..K..	..VK..E.	..H...K..ND	DVL.N.I	..F.	210
A3-8	..Q.....	R..LA..T	..S..K.P	T.K.....	..R..V D...	D.D.L	KVI.....	210
	220	230	240	250	260	270	280	
A3-1	KAQWKTPFDP	KHTEQAEFHV	SDNKTVEVEM	MTL-DLET	FRDEELGCTL	VELTYTSNDS	ALFILPDEGK	276
A3-2	276
A3-3R.....K..	276
A3-4R.....K..	276
A3-5R.....	KV...T.K..M.S.V.	276
A3-6R.....KTK..	279
A3-7N.	N..YES	..Q.ER.I	..Y.....	279
A3-8R.....	Q.YKSO	..KV.....	SIG..V..D.....	280
	290	300	310	320	330	340	350	
A3-1	MRDLEAKLTP	ETLTRWRNSL	QPRRIHELYL	PKFSIKSNYE	LNDILSQLGI	RKIFA-NADL	SGITGTADLV	345
A3-2	345
A3-3	..Q.....	..M.....T...M..	K...T-D..	345
A3-4	..Q.....	..M.....T...M..	K...T-D..	345
A3-5	..Q.....T...M..	K...T-D..	345
A3-6	..Q.....	..M.....T...M..	K...T-ADA.	348
A3-7	..Q.....L.R.R.	..R...S.H.Q	..K.....	..K...TSD.F	..DDHK.A	349
A3-8	..Q.....	..I..M.....	..E..Y..G..N.	..R...ATD.K	..K.....	..E.K.V.TQE	..DDHE.E	350
	360	370	380	390	400	410		
A3-1	VSQVVHGAAL	DVDEEGTEGA	AATGISMERT	ILR--IIVRV	NRPFLIAIVL	KDTQSIIFLG	KVTNPSEA	411
A3-2VGI..	F.--V..	411
A3-3GI..	F.--V..	411
A3-4GI..	F.--V..	411
A3-5GI..	F.--V..	411
A3-6GI..	F.--V..	414
A3-7	..H.I.K.V.	..G.....	..V.AVV.ATS	S.LHLLT.SFLS.FC	..E.....	..K..	417
A3-8K.V.	..G.....	..VKVGI.	SINNH.PLSFQ..	418

Figure 4
Multiple amino acid sequence alignment of the bovine SERPINA3 family. The eight putative bovSERPINA3 proteins were aligned using CLUSTALW [60]. Numberings refer to position in the alignment, above the sequences, and to the length of each sequence, at the end of the line. Dot indicates a common residue with that of the first sequence (bovSERPINA3-1), dash shows a gap, i.e. a position with an insertion-deletion event. Shaded characters indicate selectively conserved residues specific of the sub-group including bovSERPINA3-7 and bovSERPINA3-8. (▼) indicates asparagine (N) residue involved in a potential N-glycosylation site.

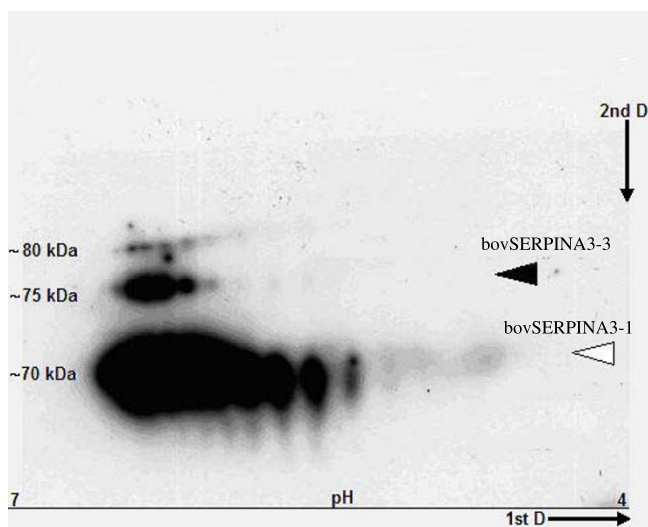


Figure 5
2D gel Western blot of a bovine SERPINA3 enriched fraction. High Mr fraction is eluted from a bovine *diaphragma* crude extract after gel filtration on a Sephadex G100 column, separated on 2D gel electrophoresis and hybridized with specific polyclonal antibodies. Arrows indicate the position of the two first characterized serpins bovSERPINA3-1 and bovSERPINA3-3. Note the linear alignment of spots corresponding to a different extent of phosphorylation of isoforms running with similar Mr on the second dimension. For more detail see the Methods section.

1 to A3-6, from the endo2 group (named from endopin2) including bovSERPINA3-7, A3-8, endopin2B and 2C. Relative orders of emerging within endo1 group are not resolved (BPs ranging from 58% to 68%), but bovSERPINA3-6 is very likely to be part of this group even if the N-terminal part of its amino acid sequence showed more similarities with bovSERPINA3-7 and A3-8. Finally, the degree of sequence divergence within the endo1 group is lower than in the endo2 one.

SERPINA3 amino acid sequences were also analysed in the context of a larger phylogeny (Figure 6B) including the closest SERPINA families based on BLAST [42] similarities and recognized as a part of its sub-group 2 by van Gent *et al.* [21]. All clades of SERPINA used in this study are supported by high bootstrap values (95 to 100%), except for SERPINA3 clade due to the highly divergent sequence of *Ornithorhynchus anatinus* SERPINA3. Phylogenetic relationships between all clades remain unsolved. However, one exception with SERPINA7 (thyroxine-binding globulin) and SERPINA9 (centerin) which are clearly sister-groups with BP of 100%. In addition to SERPINA3, SERPINA5 [43] and SERPINA7 [44] are found in the *Bos taurus* genome. However, only for SERPINA3 several genes are found especially in mouse.

Discussion

Two bovine serpins named mEndopin1A (renamed here bovSERPINA3-1) and mEndopin1B (renamed here bovSERPINA3-3) were recently purified from *diaphragma* and characterized [33,35]. Although the sequence identity between both muscle endopins is close to 93%, the major differences were found within the RCL. These two proteins are homologous to the unique human SERPINA3 and share with it a high identity (approximately 67%). The genes encoding these two proteins were shown to be expressed notably in muscle. In this study, we show that bovSERPINA3-1 and bovSERPINA3-3 are members of a family comprising at least six other deduced proteins. The genes encoding these proteins are mapped to the presently named SERPINA3 cluster localized on chromosome 21q24. Our results indicate that the locus spans over ~235 Kb and contains at least eight SERPINA3 genes with a local order of SERPINA3-1/SERPINA3-2, SERPINA3-6, SERPINA3-3/SERPINA3-4, SERPINA3-7, SERPINA3-5 and SERPINA3-8, and the pseudogene SERPINA3P localized at the 3' end of the cluster. We also mapped another SERPINA gene, SERPINA5 at the 5' end of SERPINA3-1/SERPINA3-2. This mapping is not in agreement with the publicly available Btau_2.0 genomic sequence assembly. To correlate with our proposed genomic organization based on the physical map [39], it was necessary to invert the relative positions of the two contigs (NW_930022 and NW_930023) on chromosome 21. However, all the genes identified in this work had not been listed in Btau 2.0 assembly. To date, the SERPINA3-2, SERPINA3-4 and SERPINA3-6 genes are not identified in the whole genome shotgun sequence data. This absence is probably caused by the high degree of similarity between bovine SERPINA3 genes. The current Btau 3.1 [41] doesn't clarify the situation. Indeed, the allocated genes are still the same but are now localized on two contigs distant of 2 Mb from each other (NW_001494061 and NW_001494063). The new Btau 4 version, not yet publicly available, might help us to resolve this discrepancy.

All these genes share an exon-intron organization identical to that of class 2 serpin genes, as established by Ragg and collaborators [15] with four coding exons and one untranslated exon. Moreover, they share a high degree of identity both in exonic and intronic sequences. Therefore, all these genes established a compact bovine SERPINA3 family with at least eight functional members and one pseudogene. SERPINA3 gene clusters exist in other mammal genomes. *Mus musculus* genome (build 37.1 [45]) contains nine expressed SERPINA3 genes and two pseudogenes located on chromosome 12. The deduced proteins display only 55% to 80% of identity. Porcine SERPINA3 sequence analysis defined at least three expressed genes [UniGene:55446, UniGene:50917, UniGene:3917] [31] with comparable degree of overall iden-

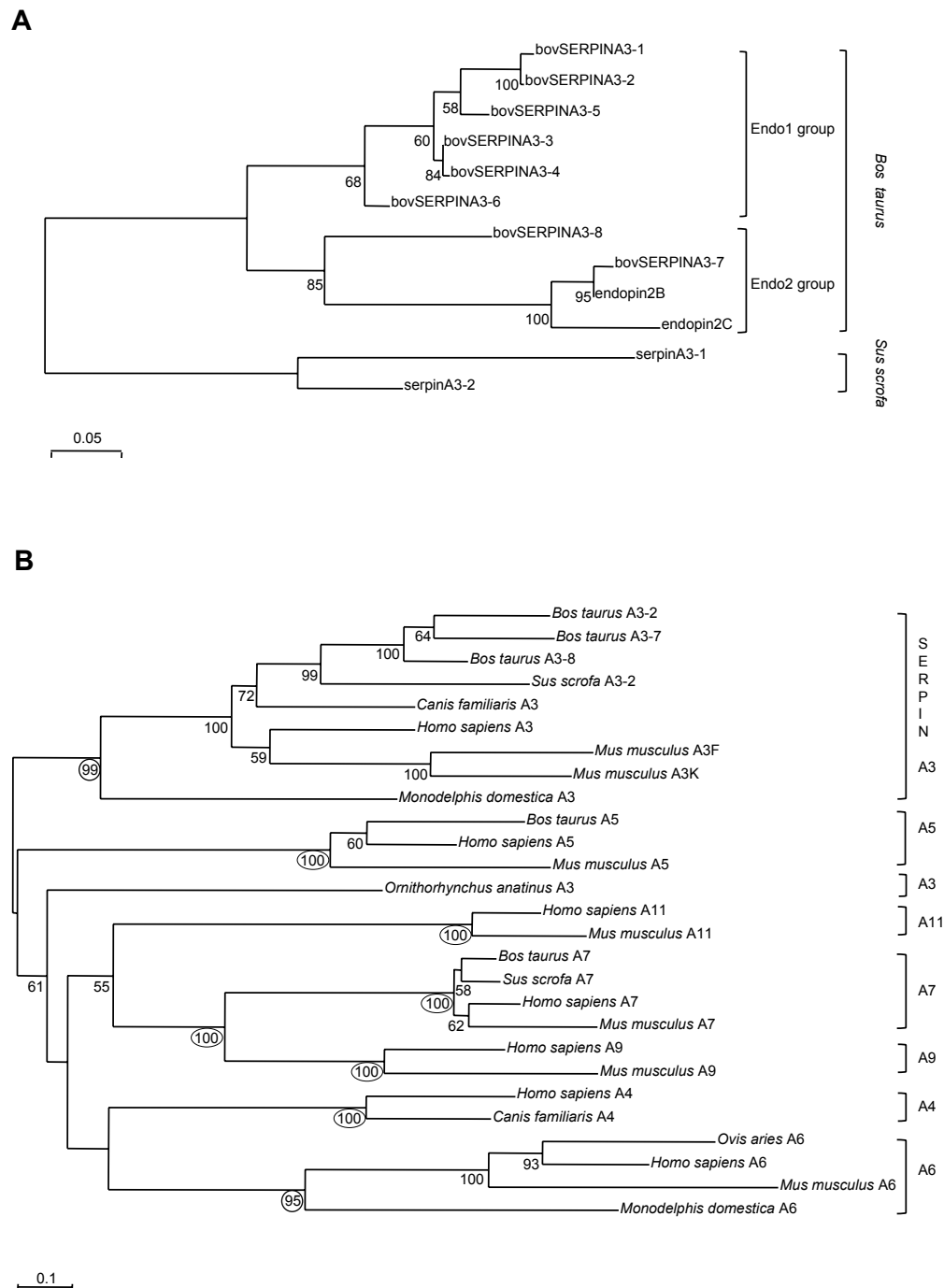


Figure 6
Phylogenetic trees including bovSERPINA3s. (A) BovSERPINA3 phylogeny based on Maximum likelihood (ML) method. The best ML tree (LnL = -3648.09) is rooted on porcine SERPINA3s. (B) SERPINA3 phylogeny based on ML method with the closest relatives of SERPINA3. The best ML tree (LnL = -16085.84) is unrooted. Bootstrap proportions are given for nodes supported in at least 50% cases. BP supporting clades are circled.

tity as observed in mice. On the other hand, primate genomes only possess a single representative *SERPINA3* gene, as seen in rhesus macaque, chimpanzee and human, the latter being located on chromosome 14q32 [16].

We described, for the first time in mammals, a serpin sub-family of eight genes with one sub-group composed of six very conserved members: *SERPINA3-1*, *SERPINA3-2*, *SERPINA3-3*, *SERPINA3-4*, *SERPINA3-5* and *SERPINA3-6*, with high degree of identity over the full sequences (from 88 to 99%). Members of the bovine *SERPINA3* sub-family arose by recent duplications after divergence from *Sus scrofa* and from an ancestral gene, located on the region 21q24, homologous to the unique primate *SERPINA3* gene. They show a considerable gene clustering as the mouse ones, but with notable differences. Indeed, rodent *SERPINA3* homologues are grouped into 4 sub-clades due to three rounds of duplication prior to speciation between mouse and rat. Following duplications, mainly in mouse, were then lineage-specific [46]. All these *SERPINA3* cluster organizations are analogous to the one observed at the family level, that is for *SERPINA*. In case of human, where 13 members are described, only *SERPINA7* and *SERPINA8* are located on different chromosomes, Xq22 and 1q42-43 respectively, whereas all others are on chromosome 14q32. They probably also arose by several rounds of duplication within as well as between chromosomes as already demonstrated for human ovalbumine-like serpins (*SERPINB*) [47]. The single clade supported by 100% BP on ML tree clustered *SERPINA7* and *SERPINA9*, although these most related members are on distinct chromosomes and present different activities, non-inhibitory and inhibitory respectively. This suggests that through evolution, the loss of inhibitory function in some *SERPINA* occurred several times independently, as seen for *SERPINA7* but also for *SERPINA6*. Finally, in bovine, although the genome is completely sequenced, only four sub-families were identified to date, with *SERPINA1*, *SERPINA3* and *SERPINA5* assigned to

chromosome 21 and *SERPINA7* probably on chromosome X as all other mammal *SERPINA7*s.

The potential active domain of serpins, in the C-terminus loop, contains the reactive site P1-P'1 responsible for the serpin specificity. In the sub-family of bovine *SERPINA3* described in this paper, the RCL (Table 1) has been identified by analogy with other members of the superfamily of serpins. As indicated in this table, boxed residues in bold characters are strongly conserved between these eight putative proteins and are specific of inhibitory serpins [48]. Moreover, for the sub-family including bovine *SERPINA3-1* to bovine *SERPINA3-6*, the full RCL sequence is remarkably conserved with more than 82% of identity. This high degree of conservation was not found in mice and porcine *SERPINA3*s. We suggest that these six bovine serpins might have a similar peptidase inhibitory pattern. Indeed, we were already able to establish for the two serpins, bovine *SERPINA3-1* and bovine *SERPINA3-3*, purified and characterized from bovine *diaphragma* muscle, a similar peptidase inhibitory pattern against the same proteases, elastase and trypsin [35]. These six serpins could represent an original sub-family of the *SERPINA3*s in bovine and not found so far in other mammals.

SERPINA3-7 corresponds to the previously identified endopins 2A/2B [49,50]. However, despite using specific set of primers, we could not amplify the third bovine endopin 2, named 2C [36] on our four different BAC DNAs.

In mice and porcine, no specific expression analyses have been conducted on proteins encoded by *SERPINA3* genes of clusters. However, although bovine *SERPINA3*s are very close, they share differential expression patterns. For example, *SERPINA3-1* is expressed in all tested tissues, whereas *SERPINA3-4* is amplified only in liver. Moreover, consensus glycosylation sites and the 2D-gel analysis predicted that bovine *SERPINA3* may be glycoproteins with dif-

Table 1: Comparison of RCL sequences for bovine *SERPINA3*s

bovSERPINA3-1	361	G	T	E	G	A	A	A	T	G	I	S	M	E	R	T	I	L	R	-	-	I	I	V	R	382
bovSERPINA3-2	361	V	G	I	.	.	.	F	.	.	-	-	382
bovSERPINA3-3	361	G	I	.	.	.	F	.	.	-	-	382
bovSERPINA3-4	361	G	I	.	.	.	F	.	.	-	-	382
bovSERPINA3-5	361	G	I	.	.	.	F	.	.	-	-	382
bovSERPINA3-6	364	G	I	.	.	.	F	.	.	-	-	385
bovSERPINA3-7	365	V	.	A	V	V	.	A	T	S	S	.	L	H	T	L	T	.	S	388
Endopin 2B	365	V	.	A	V	V	.	A	T	S	S	.	L	H	T	L	T	.	S	388
bovSERPINA3-8	366	V	K	V	G	I	T	S	I	N	N	H	.	P	L	S	389
Endopin 2C	362	V	.	A	V	I	.	F	T	S	L	P	L	H	A	L	N	I	S	385

The potential RCL within the C-terminus loop is responsible for the specificity of inhibition. It was identified for the eight putative bovine *SERPINA3*s by analogy with other serpins. Boxed residues in bold characters appeared to be more specific of inhibitory serpins [48]. The boxed arginine residue (R) for bovine *SERPINA3-1* to bovine *SERPINA3-6* could be the P1 residue for trypsin cleavage [33, 35]. The boxed threonine residue (T) for endopin2B could be the primarily P1 residue for elastase cleavage [49]. Numberings at the two extremities refer to positions in each full sequence. Dots indicate identical residues compared to those of bovine *SERPINA3-1* and dashes show gaps in the alignment.

ferent degrees of N-glycosylation. In a previous study [35], we have already shown that four potential N-glycosylation sites (Asn^{100,180,230,264}) are common to bovSERPINA3-1 and bovSERPINA3-3. However, an additional site (Asn³¹⁸) is present in bovSERPINA3-3 and could account for the slightly higher molecular mass (75 kDa for bovSERPINA3-3 versus 70 kDa for bovSERPINA3-1) as assessed by SDS-PAGE. So, as indicated in the 2D-gel Western blot analysis of a partially purified muscle bovSERPINA3 fraction (Figure 5), several bovSERPINA3s present various states of phosphorylation. Protein phosphorylation is a very important signalling pathway since this post-translational modification ensured by a large set of specific Ser/Thr/Tyr kinases, might be essential for the biological activity of the protein concerned and/or for a modulation of this activity [51,52]. Those observations lead us to propose a differential functionality for these protein isoforms.

Conclusion

Comprehensive analysis of the bovine genome *SERPINA3* content combined with phylogenetic clade recognition has allowed us to characterize one original *SERPINA3* gene cluster not identified yet in other mammals. Some of these eight corresponding proteins were shown to be expressed in various tissues and differently glycosylated and/or phosphorylated. This underlines a complex mechanism of regulation for the biological function of bovine *SERPINA3*s.

This coherent sub-family of serpins could constitute a model to study the duplication events and their underlying molecular proceedings at the origin of multigenic families.

Actually, it is interesting to notice that the numerous *SERPINA3*s of *Bos taurus* contrast with the paucity of other *SERPINA* sub-families compared to *Homo sapiens* (5 assigned and 3 predicted in bovine [41] versus 13 in human).

Methods

Isolation of genomic BACs encoding bovine *SERPINA3* genes

A bovine genomic BAC Library [53] was screened at the Centre de Ressources Biologiques (INRA, Jouy-en-Josas, France) by PCR for the isolation of the *SERPINA3* genes. PCR was performed in 50 µl volume reaction using the primers 5'-TGAGGGCAGAGAGAACTTCCTTC-3' and 5'-AGGCCTCAGAGGAGTACAGCAC-3', designed with reference to the cDNA sequence of bovine chromaffin cell Endopin 1 [GenBank: [AF125526](#)], 1.5 mM MgCl₂, 2.5 Units *Taq* DNA polymerase (Invitrogen, Carlsbad, USA) and thermocycling consisting of 94 °C for 3 min followed by 94 °C for 30 s, 55 °C for 30 s and 72 °C for 45 sec for 35

cycles. DNA from the positive BACs was isolated using a Qiagen® Large-Construct Kit tip 100 column (Qiagen Inc., Hilden, Germany) according to the manufacturer's recommendations.

Subcloning and DNA sequencing

To identify intron/exon boundaries and to provide sequence of introns and exons of each gene, BAC DNA was subjected to long-range PCR with the two following primers pairs: 5'-TGGATCCACTGCCACATCCCGCTC-3' and 5'-CTAGGCTTCACTGGGGTTGGTGAC-3' designed with reference to *Bos taurus* chromosome 21, reference assembly (based on Btau_3.1), whole genome shotgun sequence [GenBank: [NC_007319](#)] c52366530-52358602; 5'-AGCATCCGGGCAGGCGGGCTCTGGATC-CACTGC-3' and 5'-CTAGGCTTCCITGGGGTTGGT-GACTTTGCC-3' designed with reference to *Bos taurus* chromosome 21, reference assembly (based on Btau_3.1), whole genome shotgun sequence [GenBank: [NC_007319](#)] 54262873-54270895. The first set of primers was able to amplify *SERPINA3-1* to *SERPINA3-6* genes and the second *SERPINA3-7* and *SERPINA3-8* genes, using the Expand Long Template PCR System (Roche Molecular Biochemicals, Mannheim, Germany). The 50 µl PCR reaction contained 15 pmol of each primer, 2.5 units of DNA polymerase, 25 nmol of each dNTP, 50 ng of DNA and 2.25 mM MgCl₂. Amplifications were performed using the following cycling parameters: one cycle of denaturation at 94 °C for 2 min, followed by 10 cycles of 10 s at 94 °C, 30 s at 61 °C, 15 min at 68 °C, 20 cycles of 10 s at 94 °C, 30 s at 61 °C, 15 min at 68 °C, incremented by 20 s at each cycle, followed by a final elongation at 68 °C for 10 min. Amplification products were cloned using the pCR-XL-TOPO vector (Invitrogen) before sequencing. The complete sequences were obtained on both strands using several primers as described previously [35] and genomic organization of bovine *SERPINA3* genes was determined by alignments using the Sequencher™ 4.1.4 software (GeneCodes Corp., Ann Arbor, USA).

Southern blot analysis

Bovine genomic DNA was prepared from blood samples using the QIAmp Blood kit (Qiagen Inc.). Ten micrograms of bovine genomic DNA and screened BAC DNA were subjected to digestion with *SacI*, *NcoI* and *NciI* restriction endonucleases. Fragments were separated through 0.8% (w/v) agarose gel. DNA was depurinated for 20 min with 0.25 N HCl, denaturated for 30 min with 0.4 N NaOH, and transferred onto a Hybond-N+ membrane (GE Healthcare, Chalfont St. Giles, UK). A 232-bp probe was generated by PCR using 5'-TGAGGGCAGAGAGAACTTCCTTC-3' and 5'-AGGCTATGGAGACACT-CAGCG-3' as primers and bovine *mEndopin1A* (*SERPINA3-1*) cDNA as probe. Twenty-five nanograms

were labelled with [³²P]dCTP by random priming (Random Primers DNA labeling System, Invitrogen), purified to avoid unincorporated isotope (QIAquick nucleotide removal kit, Qiagen Inc.) and was used with a specific activity of 5.10⁸ cpm/mg. Hybridizations were carried out for 12 h at 65°C in a buffer containing 10% (w/v) dextran sulfate, 1% (w/v) SDS, 0.5 M NaCl, and 100 µg of sheared salmon sperm DNA. Blots were washed three times at 42°C for 10 min each with 2× SSC; 2× SSC 0.1% SDS and 1× SSC 0.1% SDS and then analyzed by PhosphorImager (Molecular Dynamics, Sunnyvale, USA).

Chromosomal localization of bovine SERPINA3 genes

The localization of *SERPINA3* genes was performed using the Roslin 3000-rad RH panel [38]. The bovine genes were typed on DNA from the 94 radiation hybrid lines together with control bovine and hamster DNA by PCR in 96-well microtitre plate using the set of primers 5'-TGAGGGCA-GAGAGAACTTCCTTC-3' and 5'-AGGCCTCAGAGGAGT-ACAGCAC-3' able to amplify a specific DNA fragment of 477 bp of exon 2. PCR reactions were performed in 20 µl with 25 ng DNA, 1 pmol of each primer, 50 mM KCl, 10 mM Tris-HCl pH 9.0, 1 µM dNTPs, 0.5 unit of Upti Therm DNA polymerase (Interchim, Montluçon, France) and 1 mM MgCl₂. The PCR was started with 3 min at 94°C followed by 35 cycles of 30 s at 94°C, 30 s at 55°C, and 45 s at 72°C for 1 min, with a final incubation at 72°C for 5 min. Reactions were carried out in duplicate. Presence or absence of the 477 bp PCR product in reactions was determined by 96 well mini-agarose gel electrophoresis. PCR fragments were visualized by ethidium bromide stained agarose gels. *SERPINA3* genes were assigned to chromosome by analyzing 2-point linkage with mapped loci using RH mapper [54].

RNA isolation and cDNA analysis

Total RNA was isolated from several frozen bovine tissues obtained within 1 h post-exsanguination from the local slaughter house of the INRA Theix Research Centre. Frozen tissue (300 mg aliquots) was pulverized with a polytron (ULTRA-TURRAX® T25 basic IKA®-WERKE), solubilized in 1 ml of TRIZOL reagent (Invitrogen), extracted with 0.2 ml chloroform, isoamylalcohol (49/1, v/v) and incubated at room temperature for 5 min. The sample was then centrifuged (12,000 g, 4°C, 15 min) and the resultant RNA present in the aqueous phase was precipitated by isopropanol and resuspended in 50 µl H₂O.

Reverse Transcription was performed from 1 µg total RNA, in a total volume of 20 µl, using 0.5 µg oligo(dT) primer (Invitrogen) and 5 units of SuperScript™ II RNase H-Reverse Transcriptase (Invitrogen) according to manufacturer's instructions. The reaction was incubated for 50 min at 42°C and 15 min at 72°C. cDNAs were stored at -20°C until use.

First strand cDNA synthesis was followed by PCR conducted with 0.4 mM sense and antisense primers, 1 unit of Upti Therm DNA polymerase (Interchim) and thermocycling consisting of 1 cycle of 3 min at 94°C followed by 35 cycles of 30 s at 94°C, 1 min at 55°C, and 1 min at 72°C, with a final incubation at 72°C for 10 min. Primers *SERPINA3-1/F* 5'-CCCATGATGACCCTTGACCT-3' and *SERPINA3-1/R* 5'-TACCAGGTCGCGGTCCTGTGAT-3' complementary to *SERPINA3-1* up to *SERPINA3-6* were designed to amplify a 319 bp DNA fragment that includes a part of exon 3 and exon 4. Analogously, primers *SERPINA3-6/F* 5'-ACCCAGAAAGAAGACAGCAAAGT-GACGTCT-3' and *SERPINA3-6/R* 5'-CTTGTGTGCGT-CACGTGGAAGTCTGTCTTC-3' complementary to *SERPINA3-6* and primers *SERPINA3-5/F* 5'-TCCTTCCTC-CTGGCCGGGCTCCTGATG-3' and *SERPINA3-5/R* 5'-GAGGATGAAGAGGGCGCTGTCGTTGCTACT-3' complementary to *SERPINA3-5* should amplify 615 bp and 797 bp DNA fragments respectively, that includes a part of exon 2 and exon 3. PCR-generated DNA fragments were subcloned into the pEasyT-vector (Promega, Madison, USA) and amplified in TOP10 competent *Escherichia coli* cells. DNA inserts of appropriate size (assessed by digestion of the plasmid with appropriate restriction endonuclease) were subjected to automated DNA sequencing as previously described. For DNA sequencing, we used reverse T7 and forward SP6 primers that flank the DNA insert.

2D-gel analysis of a partially purified bovine SERPINA3 fraction

A crude muscle extract first fractionated by differential centrifugation steps was then concentrated by ammonium sulphate precipitation between 40 and 70 % saturation and the pellet suspended in 50 mM Tris/HCl Buffer pH 7.5 containing 5 mM EDTA, 5 mM 2-β mercaptoethanol and dialysed overnight against the same buffer. The dialysed extract was then run on a Sephadex G100 column (100 × 5 cm) at a flow rate of 24 ml. h⁻¹ [35]. The first fraction inhibiting trypsin (F1) was collected and further analysed by 2D gel electrophoresis as previously described [55]. Briefly, about 100 µg of proteins were included in a buffer containing 7 M urea, 2 M thiourea, 2% (w/v) CHAPS, 0.4% (v/v) carrier ampholyte and bromophenol blue. Samples were loaded onto immobilized pH gradient strips (pH 5–8, 17 cm, Bio-Rad, Hercules, USA) and isoelectric focusing was performed using a Protean IEF cell system (Bio-Rad). Gels were passively rehydrated for 16 h. Rapid voltage ramping was subsequently applied to reach a total of 85 kV.h⁻¹. In the second dimension, proteins were resolved on 12% SDS-polyacrylamide gel electrophoresis (SDS-PAGE) gels using Protean II XL system (Bio-Rad). Gels were Coomassie Blue (colloidal blue) stained and Western blot was performed.

Western blot analysis

Anti-bovSERPINA3 antibodies raised against purified bovine mEndopin1 [56] cross-react with all isoforms of bovine serpins identified in this work and named bovSERPINA3s. Separated proteins were then transferred during 40 min at 200 mA onto a nitrocellulose membrane (Schleicher & Schuell, Dassel, Germany). The immunoblot was processed by chemiluminescence detection (Chemiluminescence Blotting Substrate [POD], Roche Molecular Biochemicals). After overnight saturation, the membrane was first incubated with rabbit anti bovSERPINA3 anti-serum (dilution 1:500) for 1 h at room temperature under agitation, and then with a second antibody, a swine anti-rabbit IgG conjugated to horseradish peroxidase (dilution 1:1000) (DAKO, Glostrup, Denmark) for 40 min at room temperature and under agitation.

Phylogenetic analysis

Details concerning SERPINAs used for phylogenetic reconstructions are shown in Table 2. Sequences were aligned using the program SEAVIEW [57]. Positions including gaps due to the alignment were removed. Twelve sequences and 402 positions, and twenty-seven sequences and 360 positions were retained for phylogenetic analyses of the multigenic sub-family of bovSERPINA3 and their relationship with other SERPINA families, respectively. Maximum likelihood trees were obtained using PHYML version 2.4.4 [58]. We applied the Jones-Taylor-Thornton (JTT) model of amino acid substitution [59], a site-to-site evolutionary rate variation modeled on a Γ distribution with 4 rate categories and the shape parameter estimated from the data. The statistical supports for internal branches were estimated by the non parametric bootstrap method on 500 replicates.

Table 2: List of SERPINAs used for the phylogenetic analyses

SERPINA	Organisms	Protein names	Accession numbers	
SERPINA3 (α 1-antichymotrypsin precursor)	<i>Bos taurus</i>	bovSERPINA3-1	AAV22405	
		bovSERPINA3-2	ABM55496	
		bovSERPINA3-3	AAV22406	
		bovSERPINA3-4	ABM55497	
		bovSERPINA3-5	ABM55498	
		bovSERPINA3-6	ABM55499	
		bovSERPINA3-7	ABM55500	
		bovSERPINA3-8	ABM55501	
		Endopin2B	AAR26722	
		Endopin2C	AAX63906	
		<i>Canis familiaris</i>		BXP_537546
		<i>Homo sapiens</i>		P01011
		<i>Monodelphis domestica</i>		XP_001375795
		<i>Mus musculus</i>	SERPINA3-F	Q80X76
	SERPINA3-K	P07759		
<i>Ornithorynchus anatinus</i>		XP_001516508		
<i>Sus scrofa</i>	SERPINA3-1	M29508		
	SERPINA3-2	CAC05490		
SERPINA4 (kallistatin precursor)	<i>Canis familiaris</i>		XP_547962	
			P29622	
SERPINA5 (plasma serine protease inhibitor precursor)	<i>Bos taurus</i>		Q9N212	
	<i>Homo sapiens</i>		P05154	
	<i>Mus musculus</i>		P070458	
SERPINA6 (corticosteroid-binding globulin precursor)	<i>Homo sapiens</i>		P08185	
	<i>Monodelphis domestica</i>		XP_001370999	
	<i>Mus musculus</i>		Q06770	
	<i>Ovis aries</i>		P49920	
	<i>Bos taurus</i>		Q9TT36	
SERPINA7 (thyroxine-binding globulin precursor)	<i>Homo sapiens</i>		P05543	
	<i>Mus musculus</i>		P16939	
	<i>Sus scrofa</i>		Q9TT35	
	<i>Homo sapiens</i>		Q86WD7	
	<i>Mus musculus</i>		Q9D7D2	
SERPINA9 (centerin precursor)	<i>Homo sapiens</i>		Q86U17	
SERPINA I	<i>Homo sapiens</i>		Q86U17	
	<i>Mus musculus</i>		Q8CIE0	

For each sub-family of SERPINAs, are listed the species names, in case of multigenic families, the nomenclature of proteins and the accession numbers.

Authors' contributions

PP and LB participated in the design of all experimental strategies employed throughout the research and performed the molecular genetic experiments. DD participated in the design of this study and carried out all bioinformatics and gene cluster organization analysis. AG carried out the phylogenetic analyses. XB participated in sequence analysis of *SERPINA3-7* and *SERPINA3-8* genes. SB and AO contributed greatly to the proteomic experiments. AM contributed to the finalization of the manuscript. All authors read and approved the final manuscript.

Acknowledgements

The authors thank Andre Eggen for providing bovine BAC clones and performing the RH-mapping; the INRA experimental slaughterhouse (Clermont Ferrand – Theix, France) for making available the bovine tissue samples studied here. The skilful technical assistance and advice of Lionel Forestier for DNA sequencing are fully acknowledged. We also are grateful to Dominique Rocha for interest reading and discussion in improving the manuscript. This work was supported by grants received from INRA and Region Limousin.

References

- Carrell RW, Travis J: **Alpha-I-antitrypsin and the serpins: variation and counter-variation.** *Trends Biochem Sci* 1985, **10**:20-24.
- Hunt LT, Dayhoff MO: **A surprising new protein superfamily containing ovalbumin, antithrombin-III, and alpha I-proteinase inhibitor.** *Biochem Biophys Res Commun* 1980, **95**:864-871.
- Doolittle RF: **Angiotensinogen is related to the antitrypsin-antithrombin-ovalbumin family.** *Science* 1983, **222**:417-419.
- Irving JA, Pike RN, Lesk AM, Whisstock JC: **Phylogeny of the serpin superfamily: implications of patterns of amino acid conservation for structure and function.** *Genome Res* 2000, **10**:1845-1864.
- Rawlings ND, Tolle DP, Barrett AJ: **Evolutionary families of peptidase inhibitors.** *Biochem J* 2004, **378**:705-716.
- Gettins PG: **Keeping the serpin machine running smoothly.** *Genome Res* 2000, **10**:1833-1835.
- Carrell RW, Boswell DR: **Serpins: The superfamily of plasma serine proteinase inhibitors.** In *Proteinase Inhibitors* Edited by: Barrett AJ, Salveson G. New York Elsevier; 1986:403-420.
- Nakashima T, Pak SC, Silverman GA, Spring PM, Frederick MJ, Clayman GL: **Genomic cloning, mapping, structure and promoter analysis of HEADPIN, a serpin which is down-regulated in head and neck cancer cells.** *Biochim Biophys Acta* 2000, **1492**:441-446.
- Potempa J, Korzus E, Travis J: **The serpin superfamily of proteinase inhibitors: structure, function, and regulation.** *J Biol Chem* 1994, **269**:15957-15960.
- Patterson SD: **Mammalian α I-antitrypsins: comparative biochemistry and genetics of the major plasma serpin.** *Comp Biochem Physiol B Comp Biochem* 1991, **100**:439-454.
- Carrell RW, Lomas D, Stein P, Whisstock J: **Dysfunctional variants and the structural biology of the serpins.** *Adv Exp Med Biol* 1997, **425**:207-222.
- Lomas DA, Carrell RW: **Serpinopathies and the conformational dementias.** *Nat Rev Genet* 2002, **3**:759-768.
- Abraham CR, Selkoe DJ, Potter H: **Immunochemical identification of the serine protease inhibitor alpha-I-Antichymotrypsin in the brain amyloid deposits of Alzheimer's disease.** *Cell* 1988, **52**:487-501.
- Kalsheker NA: **Alpha I-antichymotrypsin.** *Int J Biochem Cell Biol* 1996, **28**:961-964.
- Ragg H, Lokot T, Kamp PB, Atchley WR, Dress A: **Vertebrate serpins: construction of a conflict-free phylogeny by combining exon-intron and diagnostic site analyses.** *Mol Biol Evol* 2001, **18**:577-584.
- Billingsley GD, Walter MA, Hammond GL, Cox DW: **Physical mapping of four serpin genes: alpha I-antitrypsin, alpha I-antichymotrypsin, corticosteroid-binding globulin, and protein C inhibitor within a 280-kb region on chromosome 14q32.1.** *Am J Hum Genet* 1993, **52**:343-353.
- Rollini P, Fournier RE: **A 370-kb cosmid contig of the serpin gene cluster on human chromosome 14q32.1: molecular linkage of the genes encoding alpha I-antichymotrypsin, protein C inhibitor, Kallistatin, alpha I-antitrypsin and corticosteroid-binding globulin.** *Genomics* 1997, **46**:409-415.
- Patterson MA, Horvath AJ, Pike RN, Coughlin PB: **Molecular characterization of centerin, a germinal centre cell serpin.** *Biochem J* 2007, **405**:489-494.
- Geiger M: **Protein C inhibitor, a serpin with functions in- and outside vascular biology.** *Thromb Haemost* 2007, **97**:343-347.
- Han X, Fiehler R, Broze GJr: **Characterization of the protein Z-dependent protease inhibitor.** *Blood* 2000, **96**:3049-3055.
- Van Gent D, Sharp P, Morgan K, Kalsheker N: **Serpins: structure, function and molecular evolution.** *Int J Biochem Cell B* 2003, **35**:1536-1547.
- Goodwin RL, Barbour KW, Berger FG: **Expression of the α ₁-protease inhibitor gene family during evolution of the genus *Mus*.** *Mol Biol Evol* 1997, **14**:420-427.
- Hill RE, Shaw PH, Barth RK, Hastie ND: **A genetic locus closely linked to a protease inhibitor gene complex controls the level of multiple RNA transcripts.** *Mol Cell Biol* 1985, **5**:2114-2122.
- Forsyth S, Horvath A, Coughlin P: **A review and comparison of the murine α ₁-antitrypsin and α ₁ antichymotrypsin multigene clusters with the human clade A serpins.** *Genomics* 2003, **81**:336-345.
- Inglis JD, Hill RE: **The murine Spi-2 proteinase inhibitor locus: a multigene family with a hypervariable reactive site domain.** *EMBO J* 1991, **10**:255-261.
- Gahne B, Juneja RK: **Close genetic linkage between four plasma α -protease inhibitor loci (*Pi1*, *Po1A*, *Po1B*, *Pi2*) in pigs.** *Prot Biol Fluids* 1985, **33**:119-122.
- Stratil A, Gahne B, Juneja RK, Hjerten S, Spik G: **Pig plasma protease inhibitor gene complex: isolation and partial characterization of three inhibitors.** *Comp Biochem Physiol B* 1988, **90**:409-418.
- Stratil A, Cizova-Schröffelova D, Gabrisova E, Pavlik M, Coppieters W, Peelman L, Van de Weghe A, Bouquet Y: **Pig plasma α -protease inhibitors *Pi2*, *Pi3* and *Pi4* are members of the antichymotrypsin family.** *Comp Biochem Physiol B* 1995, **111**:53-60.
- Musilova P, Lahbib-Mansais Y, Yerle M, Cepica S, Stratil A, Coppieters W, Rubes J: **Assignment of pig alpha-I-antichymotrypsin (*AACT* or *Pi2*) gene to chromosome region 7q23-q26.** *Mamm Genome* 1995, **6**:445.
- Archibald AL, Couperwhite S, Mellink CHM, Lahbib-Mansais Y, Gellin J: **Porcine α ₁-antitrypsin (*Pi1*): cDNA sequence, polymorphism and assignment to chromosome 7q2.4-q2.6.** *Anim Genet* 1996, **27**:85-89.
- Stratil A, Peelman LJ, Mattheeuws M, Van Poucke M, Reiner G, Geldermann H: **A novel porcine gene, alpha-I-antichymotrypsin 2 (*SERPINA3-2*): sequence, genomic organization, polymorphism and mapping.** *Gene* 2002, **292**:113-119.
- Hwang SR, Steineckert B, Yasothorsrikul S, Sei CA, Toneff T, Rattan J, Hook VYH: **Molecular cloning of Endopin I, a novel serpin localized to neurosecretory vesicles of chromaffin cells.** *J Biol Chem* 1999, **274**:34164-34173.
- Tassy C, Herrera-Mendez CH, Sentandreu MA, Aubry L, Bremaud L, Pelissier P, Delourme D, Brillard M, Gauthier F, Levezuel H, Ouali A: **Muscle endopin I, a muscle intracellular serpin which strongly inhibits elastase: purification, characterization, cellular localization and tissue distribution.** *Biochem J* 2005, **388**:273-280.
- Ouali A, Rouchon P, Zabari M, Berri M, Zamora F, Tassy C: **Natural serine and cysteine proteinase inhibitors in bovine skeletal muscle.** In *Expression of tissue proteinases and regulation of protein degradation as related to meat quality* Edited by: Ouali A, Demeyer D, Smulders FJM. Utrecht (NL): ECCEAMST; 1995:173-198.
- Herrera-Mendez CH, Bremaud L, Coulis G, Pelissier P, Sentandreu MA, Aubry L, Delourme D, Chambon C, Maftah A, Levezuel H, Ouali A: **Purification of the skeletal muscle protein Endopin IB and**

- characterization of the genes encoding Endopin 1A and 1B isoforms. *FEBS Lett* 2006, **580**:3477-3484.
36. Hwang SR, Stoka V, Turk V, Hook VY: **The novel bovine serpin Endopin 2C demonstrates selective inhibition of the cysteine protease Cathepsin L compared to serine protease Elastase, in cross-class inhibition.** *Biochemistry* 2005, **44**:7757-7767.
 37. Spidey [<http://www.ncbi.nlm.nih.gov/EB/Research/Ostell/Spidey/>]
 38. Williams JL, Eggen A, Ferretti L, Farr CJ, Gautier M, Amati G, Ball G, Caramorr T, Critcher R, Costa S, Hextall P, Hills D, Jeulin A, Kiguwa SL, Ross O, Smith AL, Saunier K, Urquhart B, Waddington D: **A bovine whole-genome radiation hybrid panel and outline map.** *Mamm Genome* 2002, **13**:469-474.
 39. Schibler L, Roig A, Mahe MF, Save JC, Gautier M, Taourit S, Boichard D, Eggen A, Cribsu EP: **A first generation bovine BAC-based physical map.** *Genet Sel Evol* 2004, **36**:105-122.
 40. **Cattle Physical Map** [<http://locus.jouy.inra.fr/fpc/cattle/>]
 41. **Bos taurus Genome View** [http://www.ncbi.nlm.nih.gov/mapview/map_search.cgi?taxid=9913]
 42. Altschul SF, Madden TL, Schäffer AA, Zhang J, Zhang Z, Miller W, Lipman DJ: **Gapped BLAST and PSI-BLAST: a new generation of protein database search programs.** *Nucleic Acids Res* 1997, **25**:3389-3402.
 43. Yuasa H, Tanaka H, Hayashi T, Wakita T, Nakamura H, Nishioka J, Kawarada Y, Suzuki K: **Bovine protein C inhibitor has a unique reactive site and can transiently inhibit plasmin.** *Thromb Haemost* 2000, **83**:262-267.
 44. Janssen OE, Lahner H, Grasberger H, Spring SA, Saller B, Mann K, Refetoff S, Einspanier R: **Characterization and primary structures of bovine and porcine thyroxine-binding globulin.** *Mol Cell Endocrinol* 2002, **186**:27-35.
 45. **Mus musculus Genome View** [http://www.ncbi.nlm.nih.gov/mapview/map_search.cgi?taxid=10090]
 46. Horvath AJ, Irving JA, Rossjohn J, Law RH, Bottomley SP, Quinsey NS, Pike RN, Coughlin PB, Whisstock JM: **The murine orthologue of human antichymotrypsin. A structural paradigm for clade A3 serpins.** *J Biol Chem* 2005, **280**:43168-43178.
 47. Scott FL, Eyre HJ, Lioumi M, Ragoussis J, Irving JA, Sutherland GA, Bird PL: **Human ovalbumin serpin evolution: Phylogenetic analysis, gene organization and identification of new PI8-related genes suggest that two interchromosomal and several intrachromosomal duplications generated the gene clusters at 18q21-q23 and 6p25.** *Genomics* 1999, **62**:490-499.
 48. Gettins PG: **Serpin structure, mechanism, and function.** *Chem Rev* 2002, **102**:4751-4803.
 49. Hwang SR, Steineckert B, Toneff T, Buny R, Logvinova AV, Goldsmith P, Hook VY: **The novel serpin Endopin 2 demonstrates cross-class inhibition of Papain and Elastase: Localization of endopin 2 to regulated secretory vesicles of neuroendocrine chromaffin cells.** *Biochemistry* 2002, **41**:10397-10405.
 50. Hwang SR, Garza CZ, Wegrzyn JL, Hook VY: **Demonstration of GTG as an alternative initiation codon for the serpin endopin 2B-2.** *Biochem Biophys Res Commun* 2005, **327**:837-844.
 51. Edelman AM, Blumenthal DK, Krebs EG: **Protein Serine/Threonine Kinases.** *Annu Rev Biochem* 1987, **56**:567-613.
 52. Hubbard SR, Till JH: **Protein tyrosine kinase structure and function.** *Annu Rev Biochem* 2000, **69**:373-398.
 53. Eggen A, Gautier M, Billaut A, Petit E, Hayes H, Laurent P, Urban C, Pfister-Genskow M, Eilertsen K, Bishop MD: **Construction and characterization of a bovine BAC library with four genome-equivalent coverage.** *Genet Sel Evol* 2001, **33**:543-548.
 54. Slonim D, Kruglyak L, Stein L, Lander E: **Building human genome maps with radiation hybrids.** *J Comput Biol* 1997, **4**:487-504.
 55. Sayd T, Morzel M, Chambon C, Franck M, Figwer P, Larzul C, Le Roy P, Monin G, Cherep P, Laville E: **Proteome analysis of the sarcoplasmic fraction of pig semimembranosus muscle: implication on meat color development.** *J Agric Food Chem* 2006, **54**:2732-2737.
 56. Dutaud D, Aubry L, Henry L, Levieux D, Hendil KB, Kueh LN, Bureau JP, Ouali A: **Development and evaluation of a sandwich ELISA for quantification of the 20S proteasome in human plasma.** *J Immunol Methods* 2002, **260**:183-193.
 57. Galtier N, Gouy M, Gauthier C: **SEAVIEW and PHYLO_WIN: two graphic tools for sequence alignment and molecular phylogeny.** *Comput Appl Biosci* 1996, **12**:543-548.
 58. Guindon S, Gascuel O: **A simple, fast and accurate method to estimate large phylogenies by maximum-likelihood.** *Syst Biol* 2003, **52**:696-704.
 59. Jones DT, Taylor WR, Thornton JM: **The rapid generation of mutation data matrices from protein sequences.** *Comput Appl Biosci* 1992, **8**:275-282.
 60. Thompson JD, Higgins DG, Gibson TJ, CLUSTAL W: **Improving the sensitivity of progressive multiple sequence alignment through sequence weighting, position-specific gap penalties and weight matrix choice.** *Nucleic Acids Res* 1994, **22**:4673-80.

Publish with **BioMed Central** and every scientist can read your work free of charge

"BioMed Central will be the most significant development for disseminating the results of biomedical research in our lifetime."

Sir Paul Nurse, Cancer Research UK

Your research papers will be:

- available free of charge to the entire biomedical community
- peer reviewed and published immediately upon acceptance
- cited in PubMed and archived on PubMed Central
- yours — you keep the copyright

Submit your manuscript here:
http://www.biomedcentral.com/info/publishing_adv.asp

