

CORRECTION

Open Access



Correction to: Fine-scale population structure and evidence for local adaptation in Australian giant black tiger shrimp (*Penaeus monodon*) using SNP analysis

Nga T. T. Vu^{1,2*}, Kyall R. Zenger^{1,2}, Jarrod L. Guppy^{1,2}, Melony J. Sellars^{1,3,4}, Catarina N. S. Silva², Shannon R. Kjeldsen² and Dean R. Jerry^{1,2,5}

Correction to: BMC Genomics 21, 669 (2020)
<https://doi.org/10.1186/s12864-020-07084-x>

After publication of this article [1], it is noticed the article contained an error: Fig. 3 erroneously contained panel B as a copy of panel A instead of the correct panel B illustration.

The correct Fig. 3 is presented in this Correction.

The original article has been updated.

Published online: 20 July 2021

Reference

1. Vu NTT, Zenger KR, Guppy JL, Sellars MJ, Silva CNS, Kjeldsen SR, et al. Fine-scale population structure and evidence for local adaptation in Australian giant black tiger shrimp (*Penaeus monodon*) using SNP analysis. *BMC Genomics*. 2020;21:669 <https://doi.org/10.1186/s12864-020-07084-x>.

Author details

¹Australian Research Council Industrial Transformation Research Hub for Advanced Prawn Breeding, James Cook University, Townsville, QLD 4811, Australia. ²Centre for Sustainable Tropical Fisheries and Aquaculture, College of Science and Engineering, James Cook University, Townsville, QLD 4811, Australia. ³CSIRO Agriculture & Food, Integrated Sustainable Aquaculture Production Program, Queensland Bioscience Precinct, St Lucia 4067, Australia. ⁴Present address: Genics Pty Ltd, Level 5, Gehrman Building, 60 Research Road, St Lucia, QLD 4067, Australia. ⁵Tropical Futures Institute, James Cook University, Singapore, Singapore.

The original article can be found online at <https://doi.org/10.1186/s12864-020-07084-x>.

* Correspondence: thithanhnga.vu1@myjcu.edu.au

¹Australian Research Council Industrial Transformation Research Hub for Advanced Prawn Breeding, James Cook University, Townsville, QLD 4811, Australia

²Centre for Sustainable Tropical Fisheries and Aquaculture, College of Science and Engineering, James Cook University, Townsville, QLD 4811, Australia

Full list of author information is available at the end of the article



© The Author(s). 2021 **Open Access** This article is licensed under a Creative Commons Attribution 4.0 International License, which permits use, sharing, adaptation, distribution and reproduction in any medium or format, as long as you give appropriate credit to the original author(s) and the source, provide a link to the Creative Commons licence, and indicate if changes were made. The images or other third party material in this article are included in the article's Creative Commons licence, unless indicated otherwise in a credit line to the material. If material is not included in the article's Creative Commons licence and your intended use is not permitted by statutory regulation or exceeds the permitted use, you will need to obtain permission directly from the copyright holder. To view a copy of this licence, visit <http://creativecommons.org/licenses/by/4.0/>. The Creative Commons Public Domain Dedication waiver (<http://creativecommons.org/publicdomain/zero/1.0/>) applies to the data made available in this article, unless otherwise stated in a credit line to the data.

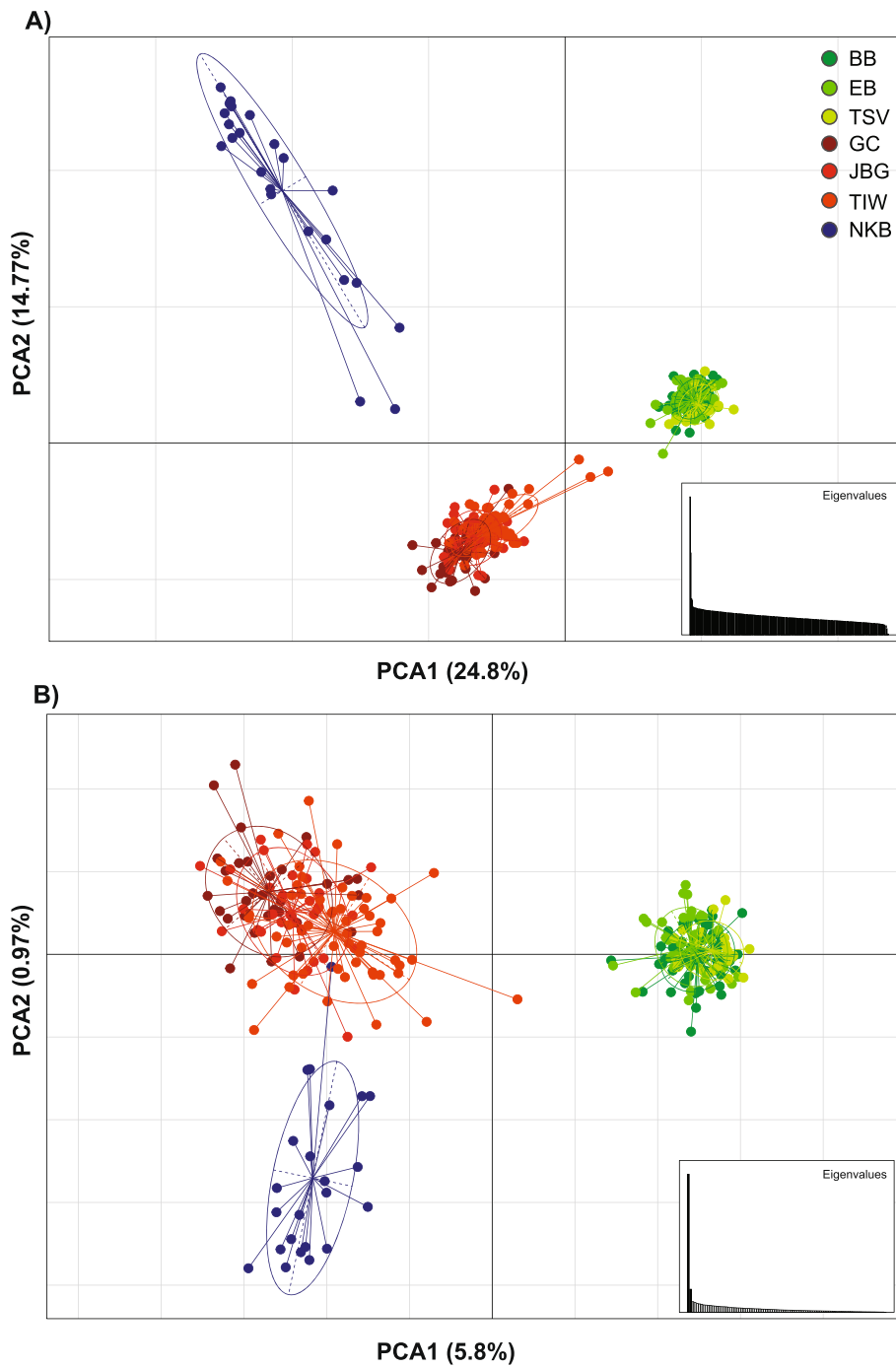


Fig. 3 Principal components analysis based allele frequencies for (a) 10,535 neutral SNPs loci and (b) 89 outlier SNPs loci (BB: Bramston Beach, EB: ETTY Bay, Townsville: TSV, Gulf of Carpentaria: GC, Joseph Bonaparte Gulf: JBG, Tiwi Island: TIW, and Nickol Bay: NKB)